

2. ID 25-0158 CONSERVATION DISTRICT UPDATE – Sarah Beth Sammons, Jefferson
County Soil and Water Conservation District

Louisville Metro
Government

Page



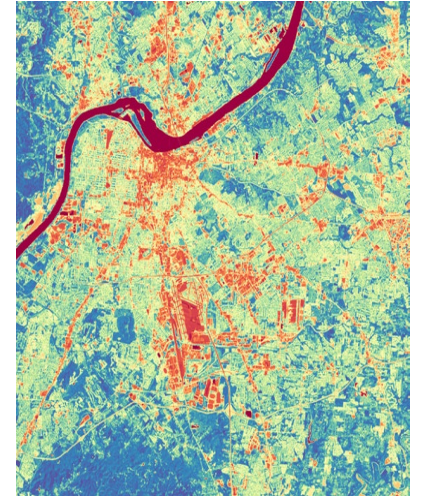
...

FY2025 Quarterly Report
to
Louisville Metro

HISTORY



MISSION



Board of Supervisors and Staff

SEVEN ELECTED SUPERVISORS

- Supervisors 4-year terms
- Elected by the residents of Jefferson County.
- Monthly board meeting, work on committees, supervise employees, oversee tax dollars, and develop programming to promote conservation practices.

DISTRICT STAFF

Administrative Secretary (part-time)

- Daily Office Operations
- Files All Reporting
- Bookkeeping and accounting coordination with Board's Treasurer
- Board Meeting Secretary
- Administers CAIP and Cost Share Programs.

Soil Technician (NRCS 80/20)

- Daily Office Operations
- Program Outreach
- Administration of some Programming
- Educational Outreach
- Technical Assistance

Achievements

Fiscal Year 2025 Q2 & Q3

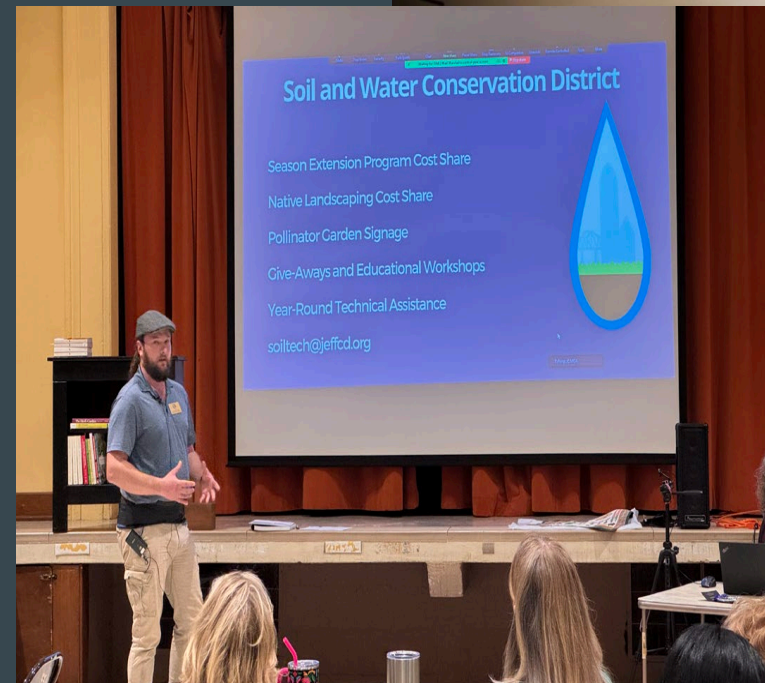
- New Soil Technician – Dave Nichter
- Supervisor Election
- CAIP Funds Awarded
- Panels, Boards, & Work Group
- Shelby Park Pumpkin Patch Soil Testing Booth
- Build Our Blocks Event: District 15
- 319 Grant Application Submitted
- Every Drop Program – KWA & MSD
- Cooperative Weed Management Area partnership with Ky Division of Forestry
- UofL Campus Sustainability Day Fair
- TreeWeek Tree Giveaway partnership with Trees Louisville
- Organic Association of Kentucky Conference
- Ky Division of Conservation Environmental Grant
- Agriculture Districts Certifications
 - 1st New Jefferson County Ag. District in twenty years
- Kentucky Black Farmers Conference
- Expansion of Programming – Season Extension
- Soil Testing
- Jefferson Co. Master Gardeners
- Really, Really Free Market – BonAir Library
- Louisville Regional Science & Engineering Fair

Soil Technician

Entry Level Position
Shared between the SWCD and
the Louisville work unit of the
Natural Resources
Conservation Service (NRCS)

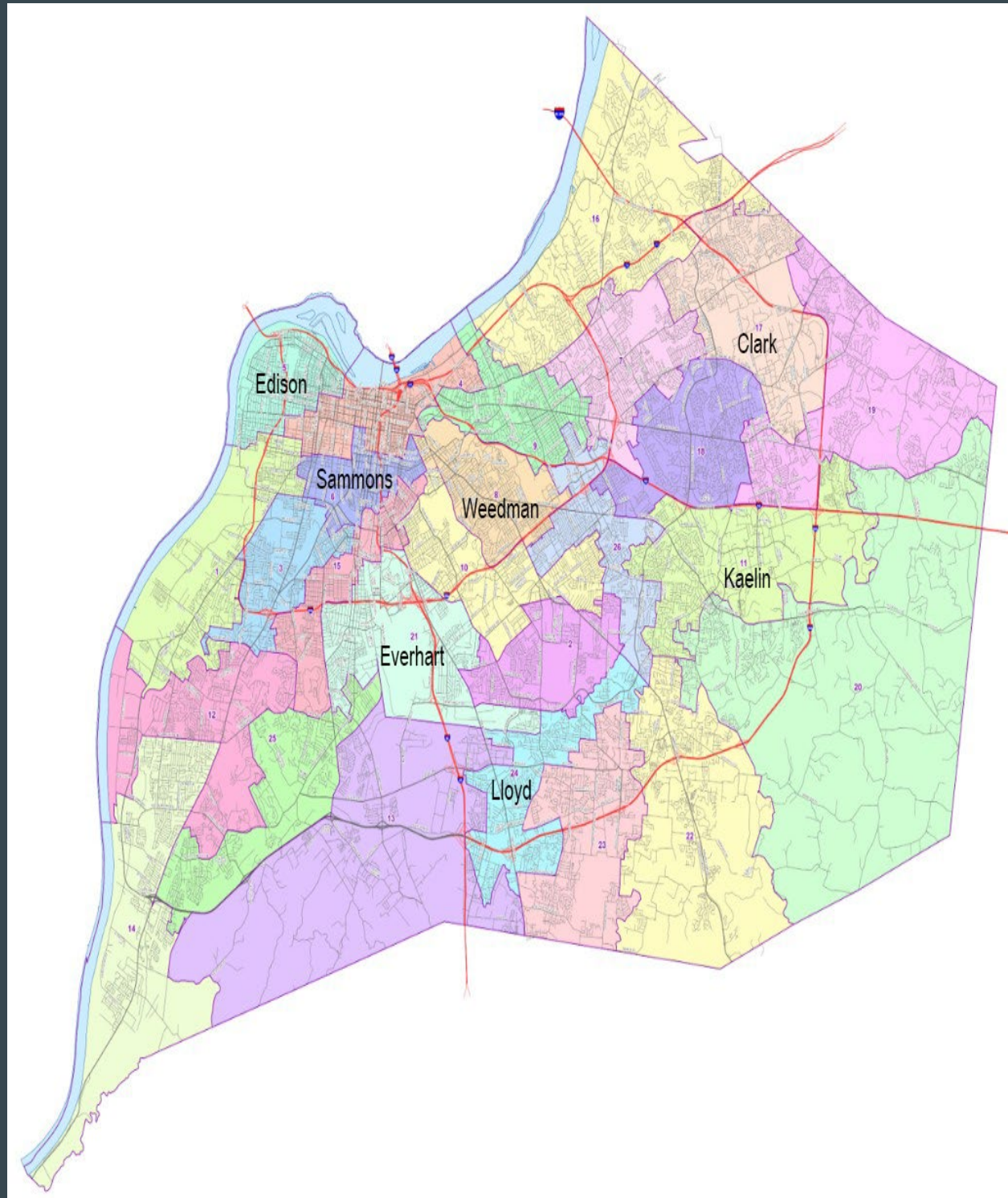
NRCS pays 80% of salary
SWCD pays 20% of salary

Dave Nichter



Supervisor Elections

- Re-Elected Supervisors
 - Sarah Beth Sammons – CD 6
 - David Kaelin – CD 11
- New Supervisors
 - Elizabeth Everhart – CD 21
 - Leta Weedman – CD 8
- Board Appointed
 - Dr. Thomas Edison – CD 5
 - Tyler Lloyd – CD 24
- Continuing Supervisor
 - Austin Clark – CD 17



CAIP (County Agricultural Investment Program)

Closed Application Period: October 11th

Jefferson County
SWCD

Awarded full amount

Jefferson County
CAIP funds:

\$35,000

12 Approved Applicants

District 9 - \$2,770

(2) District 11 - \$5,540

District 15 - \$2,770

District 16 - \$2,770

(5) District 20 - \$13,850

(2) District 22 - \$5,540

\$11,070 Awarded to Date

Apiary Equipment

New Apiary Setup

Pasture Fencing

Cultivation Equipment

Trellis Structure

Panels, Boards, & Workgroups



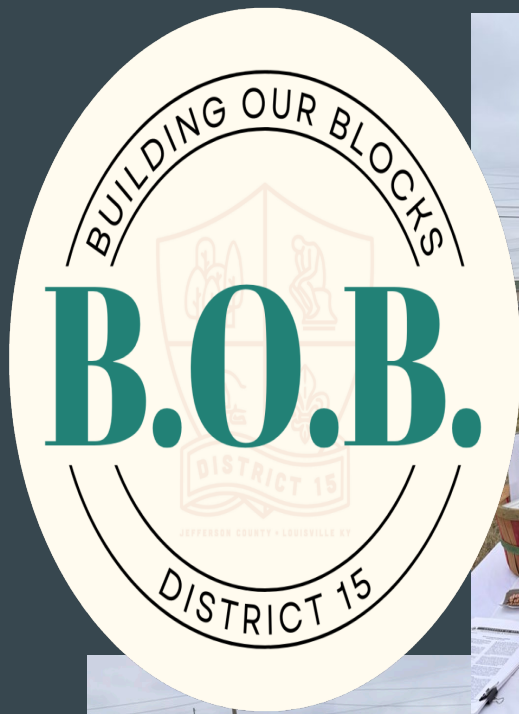
- MSD Middle Beargrass Creek Steering Committee
- Metro Tree Advisory Board Workshop
- Metro Parks & Recreation
- Parks Alliance Partnership Meeting
- MSD Partnership Meeting
- KWA Partnership Meeting
- MSD Public Information Plan Committee



Shelby Park Beer Garden & Pumpkin Patch

- Free Soil Testing Vouchers
 - Sample Bags
 - Instructions
 - Demonstration
- Giveaways
 - Environmental Education Activity Books from free Federal Government Sources
 - Packable Reusable Tote Bag
 - Native Pollinator Flower Seed





Building Our Blocks

November 16th on Third Street

- Provided 10 Rain Barrels to Residents
- Provided 20+ Soil Testing "Kits"
- Distributed:
 - Conservation Education Material
 - Native Pollinator Flower Seeds
 - Native Plant Garden Ordinance Signage

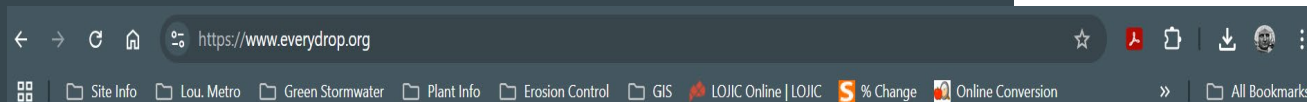


319 Grant Application

- Project Funding Request \$90,000
- Federal Clean Water Act 1987
 - Funding to Reduce Pollution
 - Ky DOW Distributes Funding
 - Implementation of Watershed Based Plan
 - Demonstrate BMPs
 - Support Education & Outreach Program
- Partnerships
 - Louisville MSD
 - Jefferson Co. Master Gardeners Association
 - Louisville Metro Parks & Recreation
 - Olmsted Parks Conservancy
 - Middle Fork Beargrass Creek Steering Committee
 - Kentucky Waterways Alliance
 - Farmington Historic Home



Every Drop Program

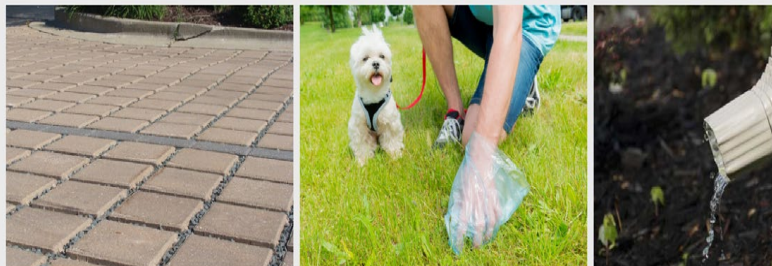
The banner features a vibrant background of green leaves, pink flowers, and a yellow butterfly. The text 'Soak Up the Rain' is prominently displayed in large white letters. Below it, in smaller white text, is 'Small changes at home. Big help for Louisville's waterways.'

Soak Up the Rain

Small changes at home.
Big help for Louisville's waterways.

Tips & Tricks for Stormwater Collection at Home

Here are things you can start doing today to make a difference!



★ TAKE THE EVERY DROP PLEDGE OR APPLY FOR AN INSTALLATION



Who Is The Program For?

There is no ideal lot or location; properties eligible for Every Drop come in all different shapes, and sizes, but must be within the [Beargrass Creek Watershed](#).

Unfortunately, not all of the different Every Drop installation options are suitable for all sites, so not all applicants will be approved.

Volunteer availability ([come join us!](#)), weather, seasons, and funding all play a role in deciding how many participants can be accepted each year.

How Much Does It Cost?

Total cost estimates will be discussed before work begins. The average cost for the homeowner is between \$80 - \$100, but varies depending on size. Please note, this program is not intended to mitigate flooding or drainage issues; it is to promote better water quality for the creek, beautify the property and save the homeowner some money!



Why Should I Do This?

What could Louisville do with a clean and active Beargrass Creek? Everything! Kayaking, paddle boarding, dog dips, safe fishing, nature collections, children playing - the benefits of a healthy, vital water system are endless.

As we have seen in other cities, access to clean water should not be taken for granted. It is our job as residents of this city to protect our water sources, so our community can have clean, prosperous water today and for years to come.

About Every Drop

Every Drop is a stormwater best practices program. Our team of [volunteers](#) helps Louisville homeowners install rain barrels, rain gardens, trees, and native plant gardens at a reduced cost. These small steps go a long way towards helping [Beargrass Creek](#).

Learn more about Every Drop

Cooperative Weed Management Area Ky Division of Forestry

Partnership between SWCD and
Ky Division of Forestry

Invasive Plant Removal

Spread Awareness &
Increase Public Awareness

Provide Technical Assistance
& Educational Materials

Community Volunteer Events

Potential Partnership with Metro Parks & Rec.
Olmsted Parks, and Urban Forestry.



University of Louisville

Campus Sustainability Day Fair



- UofL's 17th Annual Celebration
- Offered Signups to Volunteer Activities & Receive Newsletter
- Distributed Conservation Materials:
 - Environmental Education Activity Books from free Federal Government Sources
 - Packable Reusable Tote Bag
 - Native Pollinator Flower Seed
 - Discussed Careers in Conservation



Partnership with



- Sponsorship of a Trees Louisville tree giveaway during Tree Week
 - October 12, 2024
 - 600 - One Gallon Container Trees
 - SWCD Tabling during event distributing:
 - Soil Testing Kits
 - Native Plant Seed for Landscapes
 - Information on SWCD Programs



Organic Association of Kentucky Conference

- Jefferson Co. SWCD invited to table
- Outreach and Engagement:
 - Farmers and Producers from Jefferson County
 - Program Expansion
 - Low Tunnels & High Tunnels
 - Partnership with Jefferson Co. NRCS
 - Connections to other Technical Assistance and Funding Groups that could potentially assist Jefferson County Farmers and Producers



Ky Division of Conservation Environmental Grant

- Environmental Grants of \$5,000
- Awarded to Ky Conservation Districts
 - Maximum Cost Share Rate 75%
- Jeff. Co. SWCD has received Grant 2020, 2021, 2022, 2023, & 2025
 - Utilized to fund Soil Testing
 - Funds 625 Soil Nutrient Tests
 - \$1,250 Match
 - \$1,000 to Jefferson Co. Extension for Soil Tests Shipping Costs
- \$250 – Technical Assistance & Workshops

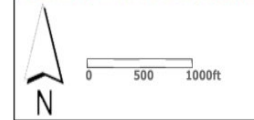


Agricultural Districts

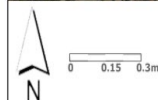
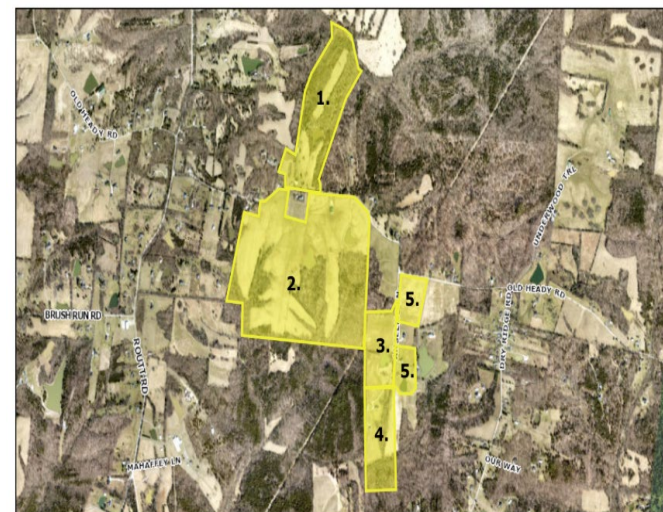
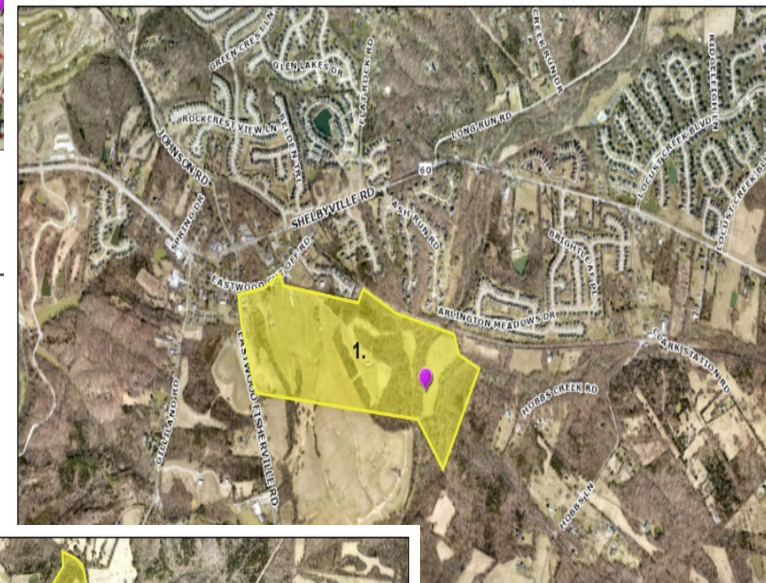


First New Ag. District in 20 Years

Recertified Existing Ag. Districts



1. Mark Timmons
2. Charles Edwards
3. Barbara L. Isbell



Ag District 056-05

12/3/2024, 4:55:57 PM



Louisville Metro, MSD, LIRC & PAH © 2024
This map is not a legal document and should only be used for general reference and identification.

056-06

9:02 PM



Louisville Metro, MSD, LIRC & PAH © 2024
This map is not a legal document and should only be used for general reference and identification.

YOU WON'T WANT TO MISS OUT

KENTUCKY BLACK FARMERS CONFERENCE

Register Now to save your spot!

February 27th - March 1st, 2025
Louisville, Kentucky



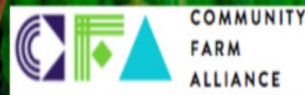
[BIT.LY/KBFA2025](https://bit.ly/KBFA2025)

Kentucky Black Farmers Conference

Bronze Level Event Sponsor

Event Table

- Outreach to Jefferson County Farmers & Producers
- Programming Expansion
 - Low Tunnels
 - CAIP Funding
 - NRCS Programs
- Cover Crop Program
 - Soil Testing
- Technical Assistance



The Urban High Tunnel Initiative is now...

The Season Extension Program

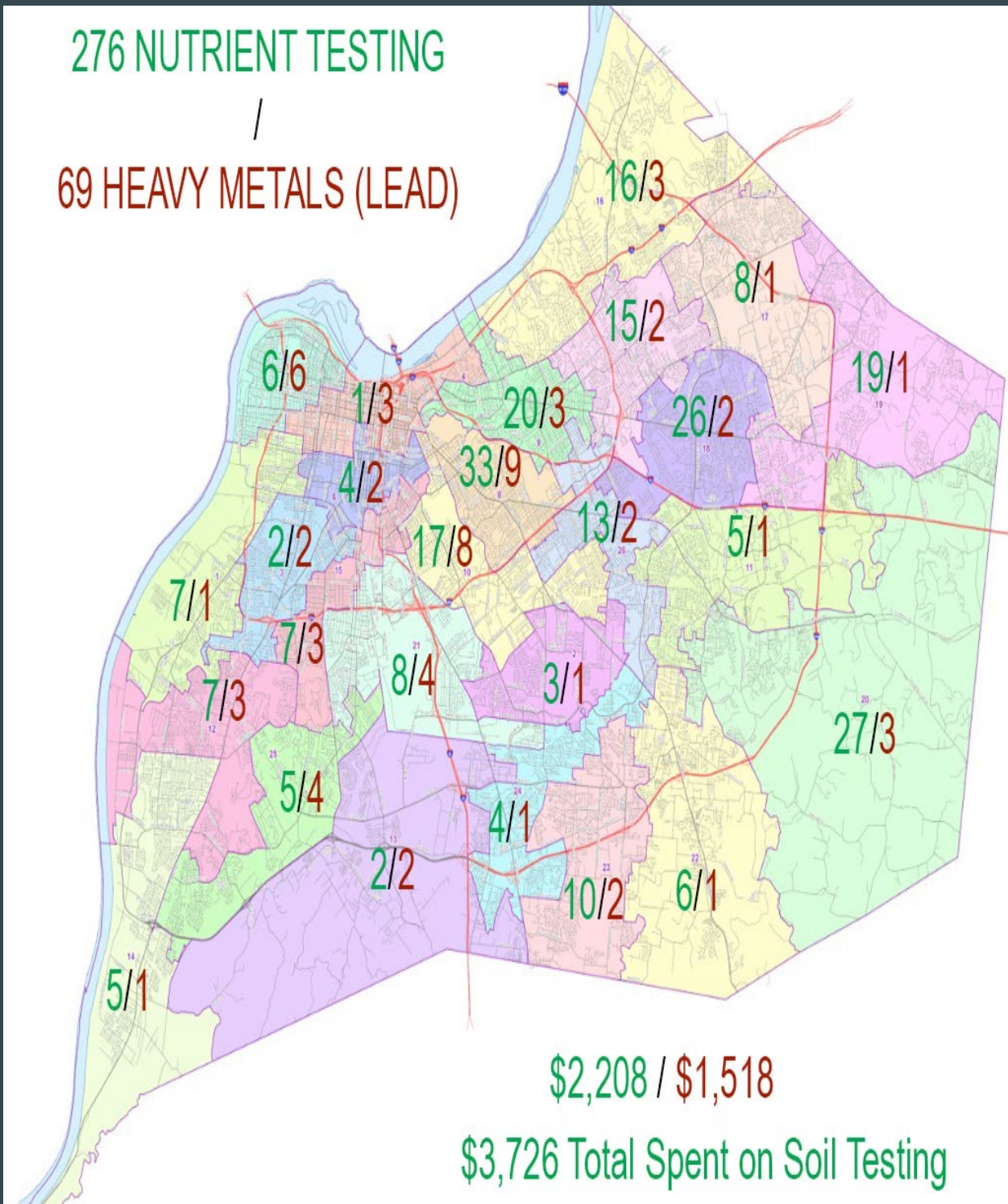
- Low Tunnels
 - Awards capped at \$1,500
 - Reimbursements 50% to 100%
 - Prioritizes
 - Producers in Food Desert Areas
 - Existing Food Producers
- High Tunnels
 - Awards capped at \$1,500
 - Reimbursements can be used to construct new or repair existing high tunnels.



276 NUTRIENT TESTING

/

69 HEAVY METALS (LEAD)

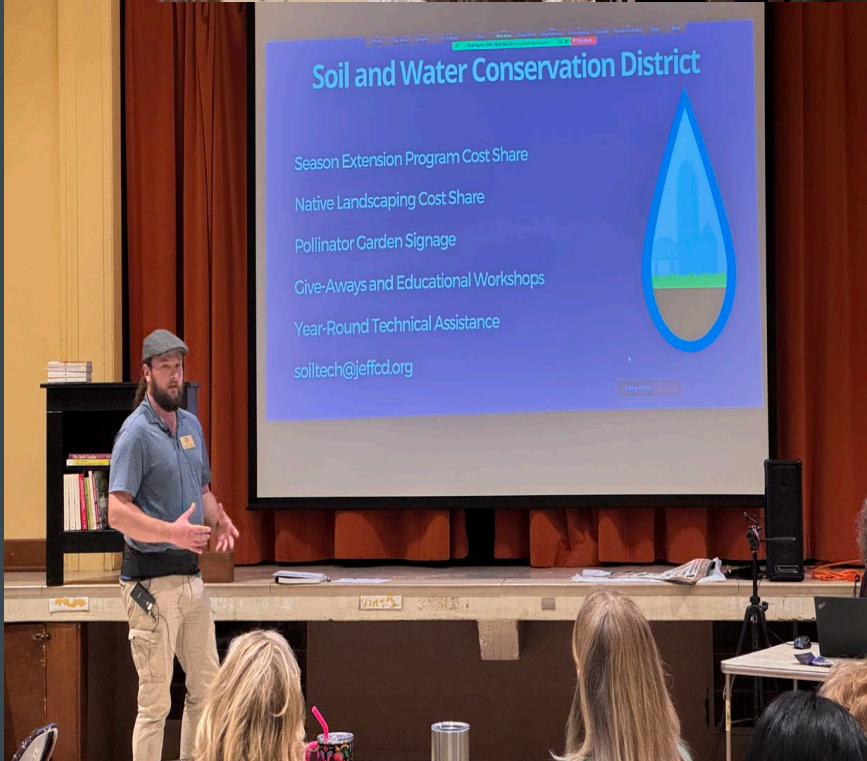


Community Soil Testing

- Provided 345 Soil Tests
 - 276 Nutrient Testing
 - 69 Soil Heavy Metals Testing
- Assisted Jefferson County Extension in paying administrative costs to send soil samples to the state lab.



Jefferson County Master Gardeners Association Meeting



- Presentation at Monthly Association Meeting
- Discussed Technical Assistance Provided
 - Velvet Welch, Master Gardener
 - Founder of Sacred Earth Community Garden
- Shared Upcoming SWCD Workshops & Classes
- Demonstrations/Classes
 - Partnerships with JCMGA
 - Paristown Garden Show
 - Farmington Plant Sale
 - Farmington Public Soil Quality Class

Really, Really Free Market BonAir Library



- Free Soil Testing Vouchers
 - Sample Bags
 - Instructions
 - Demonstration
- Giveaways
 - Environmental Education Activity Books from free Federal Government Sources
 - Packable Reusable Tote Bag
 - Native Pollinator Flower Seed

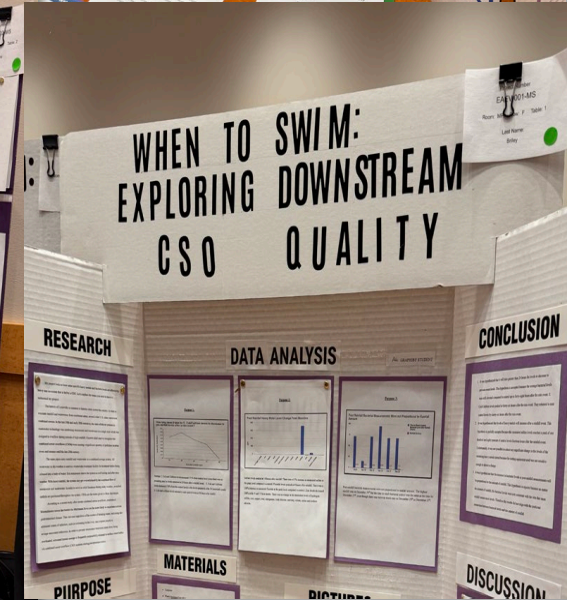
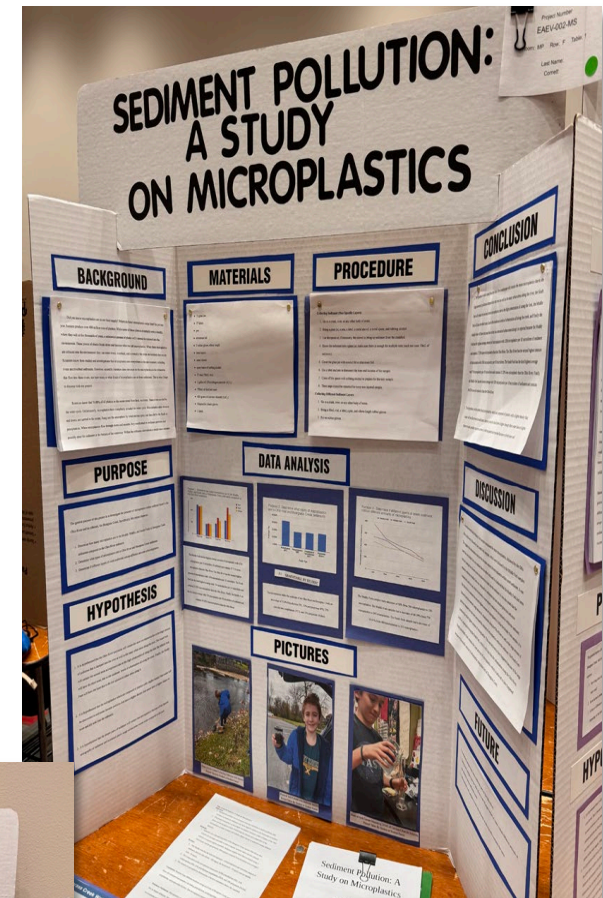
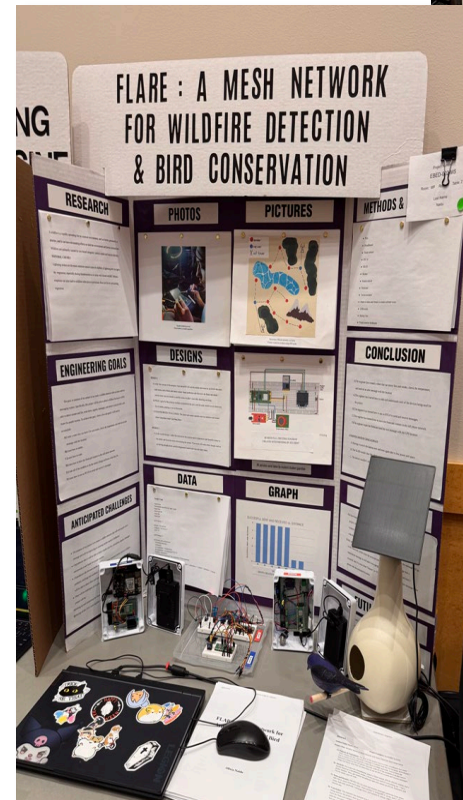
Louisville Regional Science and Engineering Fair

Conservation Awards Sponsor

First Place - \$200

Second Place - \$150

Third Place - \$100



Conservation District Funding

FY2025 Q2

SWCD Budget

- Revenue \$62,056
 - Louisville Metro \$56,600
 - Ky Div. of Conservation \$851
 - NRCS \$3,430
 - Workshop Fees \$280
 - Donations \$40
 - Interest, Etc. \$855
- Expenses \$32,591
 - Personnel \$14,034
 - Supervisor Per Diem \$1,616
 - Operating \$5,418
 - Administration \$1,435
 - Programming \$10,088

Conservation District Funding

Fiscal Year 2026

- Federal Administration Impact
 - Conservation & Environmental Grant and Funding Freeze
 - NRCS Office Closures - Lexington
 - FSA State Office Closure
 - Mazzoli Federal Building – Disposal List
- SWCD Budget & Plan of Work
 - Metro \$113,200 (28%)
 - Operating Expenses \$232,304 (58%)
 - Programs/Projects \$97,120 (24%)
 - Board Expenses \$15,418 (4%)
 - Materials, Fees, & Dues \$57,723 (14%)
 - Total Budget \$402,565

Thank you for your time and attention.

...

