

PROCESS AND EDUCATION

Land Development Code

Office of Planning and
Design Services



DEVELOP
LOUISVILLE
LOUISVILLE FORWARD

What is Zoning?

Zoning is a method in which each parcel of land within a city is designated a 'zone' which determines what the land can be used for, as well as ensure compatibility with surrounding parcels.

What are Zoning Districts?

Any area within Jefferson County delineated on the Zoning District Map to which a set of regulations governing permitted land use, density and intensity of development applies.

WHAT IS THE LAND DEVELOPMENT CODE?

It's a set of land use and design rules that regulates development and what can be done on private property.

Two Tiered Zoning

- 1st tier - Zoning districts
- 2nd tier - Form districts
 - “An area with distinct boundaries, delineated on the Zoning District Map to which a set of regulations governing the pattern and form of development and redevelopment applies.”

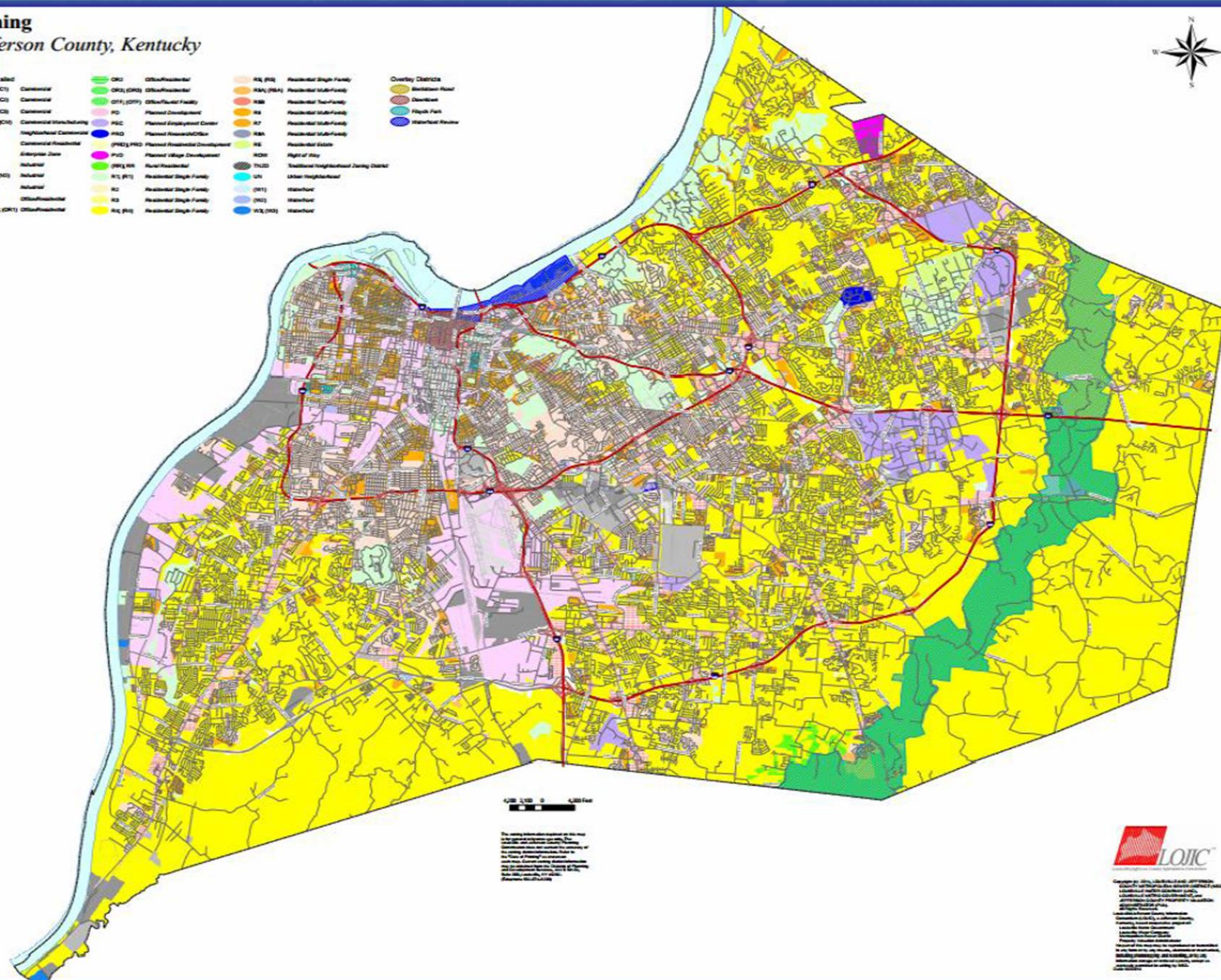
Zoning Districts

- **Residential**
 - **Single Family Residential Districts**
 - **Multi-family Residential Districts**
 - **Office-Residential Districts**
- **Non-Residential**
 - **Commercial Districts**
 - **Manufacturing Districts**
 - **Multipurpose Districts:**

Zoning Jefferson County, Kentucky

Legend

Zoning-Contested	Commercial	Office/Professional	Office/Professional	Office/Professional	Office/Professional
C1, C1S	C1, C1S	CO, COC	CO, COC	CO, COC	CO, COC
C2, C2S	C2, C2S	C2, C2S	C2, C2S	C2, C2S	C2, C2S
C3, C3S	C3, C3S	C3, C3S	C3, C3S	C3, C3S	C3, C3S
C4, C4S	C4, C4S	C4, C4S	C4, C4S	C4, C4S	C4, C4S
C5, C5S	C5, C5S	C5, C5S	C5, C5S	C5, C5S	C5, C5S
C6, C6S	C6, C6S	C6, C6S	C6, C6S	C6, C6S	C6, C6S
C7, C7S	C7, C7S	C7, C7S	C7, C7S	C7, C7S	C7, C7S
C8, C8S	C8, C8S	C8, C8S	C8, C8S	C8, C8S	C8, C8S
C9, C9S	C9, C9S	C9, C9S	C9, C9S	C9, C9S	C9, C9S
C10, C10S	C10, C10S	C10, C10S	C10, C10S	C10, C10S	C10, C10S
C11, C11S	C11, C11S	C11, C11S	C11, C11S	C11, C11S	C11, C11S
C12, C12S	C12, C12S	C12, C12S	C12, C12S	C12, C12S	C12, C12S
C13, C13S	C13, C13S	C13, C13S	C13, C13S	C13, C13S	C13, C13S
C14, C14S	C14, C14S	C14, C14S	C14, C14S	C14, C14S	C14, C14S
C15, C15S	C15, C15S	C15, C15S	C15, C15S	C15, C15S	C15, C15S
C16, C16S	C16, C16S	C16, C16S	C16, C16S	C16, C16S	C16, C16S
C17, C17S	C17, C17S	C17, C17S	C17, C17S	C17, C17S	C17, C17S
C18, C18S	C18, C18S	C18, C18S	C18, C18S	C18, C18S	C18, C18S
C19, C19S	C19, C19S	C19, C19S	C19, C19S	C19, C19S	C19, C19S
C20, C20S	C20, C20S	C20, C20S	C20, C20S	C20, C20S	C20, C20S
C21, C21S	C21, C21S	C21, C21S	C21, C21S	C21, C21S	C21, C21S
C22, C22S	C22, C22S	C22, C22S	C22, C22S	C22, C22S	C22, C22S
C23, C23S	C23, C23S	C23, C23S	C23, C23S	C23, C23S	C23, C23S
C24, C24S	C24, C24S	C24, C24S	C24, C24S	C24, C24S	C24, C24S
C25, C25S	C25, C25S	C25, C25S	C25, C25S	C25, C25S	C25, C25S
C26, C26S	C26, C26S	C26, C26S	C26, C26S	C26, C26S	C26, C26S
C27, C27S	C27, C27S	C27, C27S	C27, C27S	C27, C27S	C27, C27S
C28, C28S	C28, C28S	C28, C28S	C28, C28S	C28, C28S	C28, C28S
C29, C29S	C29, C29S	C29, C29S	C29, C29S	C29, C29S	C29, C29S
C30, C30S	C30, C30S	C30, C30S	C30, C30S	C30, C30S	C30, C30S
C31, C31S	C31, C31S	C31, C31S	C31, C31S	C31, C31S	C31, C31S
C32, C32S	C32, C32S	C32, C32S	C32, C32S	C32, C32S	C32, C32S
C33, C33S	C33, C33S	C33, C33S	C33, C33S	C33, C33S	C33, C33S
C34, C34S	C34, C34S	C34, C34S	C34, C34S	C34, C34S	C34, C34S
C35, C35S	C35, C35S	C35, C35S	C35, C35S	C35, C35S	C35, C35S
C36, C36S	C36, C36S	C36, C36S	C36, C36S	C36, C36S	C36, C36S
C37, C37S	C37, C37S	C37, C37S	C37, C37S	C37, C37S	C37, C37S
C38, C38S	C38, C38S	C38, C38S	C38, C38S	C38, C38S	C38, C38S
C39, C39S	C39, C39S	C39, C39S	C39, C39S	C39, C39S	C39, C39S
C40, C40S	C40, C40S	C40, C40S	C40, C40S	C40, C40S	C40, C40S
C41, C41S	C41, C41S	C41, C41S	C41, C41S	C41, C41S	C41, C41S
C42, C42S	C42, C42S	C42, C42S	C42, C42S	C42, C42S	C42, C42S
C43, C43S	C43, C43S	C43, C43S	C43, C43S	C43, C43S	C43, C43S
C44, C44S	C44, C44S	C44, C44S	C44, C44S	C44, C44S	C44, C44S
C45, C45S	C45, C45S	C45, C45S	C45, C45S	C45, C45S	C45, C45S
C46, C46S	C46, C46S	C46, C46S	C46, C46S	C46, C46S	C46, C46S
C47, C47S	C47, C47S	C47, C47S	C47, C47S	C47, C47S	C47, C47S
C48, C48S	C48, C48S	C48, C48S	C48, C48S	C48, C48S	C48, C48S
C49, C49S	C49, C49S	C49, C49S	C49, C49S	C49, C49S	C49, C49S
C50, C50S	C50, C50S	C50, C50S	C50, C50S	C50, C50S	C50, C50S
C51, C51S	C51, C51S	C51, C51S	C51, C51S	C51, C51S	C51, C51S
C52, C52S	C52, C52S	C52, C52S	C52, C52S	C52, C52S	C52, C52S
C53, C53S	C53, C53S	C53, C53S	C53, C53S	C53, C53S	C53, C53S
C54, C54S	C54, C54S	C54, C54S	C54, C54S	C54, C54S	C54, C54S
C55, C55S	C55, C55S	C55, C55S	C55, C55S	C55, C55S	C55, C55S
C56, C56S	C56, C56S	C56, C56S	C56, C56S	C56, C56S	C56, C56S
C57, C57S	C57, C57S	C57, C57S	C57, C57S	C57, C57S	C57, C57S
C58, C58S	C58, C58S	C58, C58S	C58, C58S	C58, C58S	C58, C58S
C59, C59S	C59, C59S	C59, C59S	C59, C59S	C59, C59S	C59, C59S
C60, C60S	C60, C60S	C60, C60S	C60, C60S	C60, C60S	C60, C60S
C61, C61S	C61, C61S	C61, C61S	C61, C61S	C61, C61S	C61, C61S
C62, C62S	C62, C62S	C62, C62S	C62, C62S	C62, C62S	C62, C62S
C63, C63S	C63, C63S	C63, C63S	C63, C63S	C63, C63S	C63, C63S
C64, C64S	C64, C64S	C64, C64S	C64, C64S	C64, C64S	C64, C64S
C65, C65S	C65, C65S	C65, C65S	C65, C65S	C65, C65S	C65, C65S
C66, C66S	C66, C66S	C66, C66S	C66, C66S	C66, C66S	C66, C66S
C67, C67S	C67, C67S	C67, C67S	C67, C67S	C67, C67S	C67, C67S
C68, C68S	C68, C68S	C68, C68S	C68, C68S	C68, C68S	C68, C68S
C69, C69S	C69, C69S	C69, C69S	C69, C69S	C69, C69S	C69, C69S
C70, C70S	C70, C70S	C70, C70S	C70, C70S	C70, C70S	C70, C70S
C71, C71S	C71, C71S	C71, C71S	C71, C71S	C71, C71S	C71, C71S
C72, C72S	C72, C72S	C72, C72S	C72, C72S	C72, C72S	C72, C72S
C73, C73S	C73, C73S	C73, C73S	C73, C73S	C73, C73S	C73, C73S
C74, C74S	C74, C74S	C74, C74S	C74, C74S	C74, C74S	C74, C74S
C75, C75S	C75, C75S	C75, C75S	C75, C75S	C75, C75S	C75, C75S
C76, C76S	C76, C76S	C76, C76S	C76, C76S	C76, C76S	C76, C76S
C77, C77S	C77, C77S	C77, C77S	C77, C77S	C77, C77S	C77, C77S
C78, C78S	C78, C78S	C78, C78S	C78, C78S	C78, C78S	C78, C78S
C79, C79S	C79, C79S	C79, C79S	C79, C79S	C79, C79S	C79, C79S
C80, C80S	C80, C80S	C80, C80S	C80, C80S	C80, C80S	C80, C80S
C81, C81S	C81, C81S	C81, C81S	C81, C81S	C81, C81S	C81, C81S
C82, C82S	C82, C82S	C82, C82S	C82, C82S	C82, C82S	C82, C82S
C83, C83S	C83, C83S	C83, C83S	C83, C83S	C83, C83S	C83, C83S
C84, C84S	C84, C84S	C84, C84S	C84, C84S	C84, C84S	C84, C84S
C85, C85S	C85, C85S	C85, C85S	C85, C85S	C85, C85S	C85, C85S
C86, C86S	C86, C86S	C86, C86S	C86, C86S	C86, C86S	C86, C86S
C87, C87S	C87, C87S	C87, C87S	C87, C87S	C87, C87S	C87, C87S
C88, C88S	C88, C88S	C88, C88S	C88, C88S	C88, C88S	C88, C88S
C89, C89S	C89, C89S	C89, C89S	C89, C89S	C89, C89S	C89, C89S
C90, C90S	C90, C90S	C90, C90S	C90, C90S	C90, C90S	C90, C90S
C91, C91S	C91, C91S	C91, C91S	C91, C91S	C91, C91S	C91, C91S
C92, C92S	C92, C92S	C92, C92S	C92, C92S	C92, C92S	C92, C92S
C93, C93S	C93, C93S	C93, C93S	C93, C93S	C93, C93S	C93, C93S
C94, C94S	C94, C94S	C94, C94S	C94, C94S	C94, C94S	C94, C94S
C95, C95S	C95, C95S	C95, C95S	C95, C95S	C95, C95S	C95, C95S
C96, C96S	C96, C96S	C96, C96S	C96, C96S	C96, C96S	C96, C96S
C97, C97S	C97, C97S	C97, C97S	C97, C97S	C97, C97S	C97, C97S
C98, C98S	C98, C98S	C98, C98S	C98, C98S	C98, C98S	C98, C98S
C99, C99S	C99, C99S	C99, C99S	C99, C99S	C99, C99S	C99, C99S
C100, C100S	C100, C100S	C100, C100S	C100, C100S	C100, C100S	C100, C100S



0 1000 2000 Feet

This zoning map was prepared by the LOJIC team. It is based on the most current zoning data available. The map is not a legal document and should not be used for legal purposes. For more information, please contact the LOJIC team.



LOJIC is a team of professionals who work together to provide the best possible service to our clients. We are committed to excellence in everything we do. If you have any questions or need more information, please contact us at [phone number] or [email address].

- Regulate building and site design
- Twelve Form Districts
- Traditional
 - Buildings located close to road
 - Parking spaces behind building
 - Streets - grid pattern with alleys and sidewalks
 - Narrow residential lots
 - Non-residential uses at street corners
- Suburban
 - Buildings set back from road
 - Parking in front of building
 - Larger residential lots
 - Less transit and pedestrian oriented than traditional forms



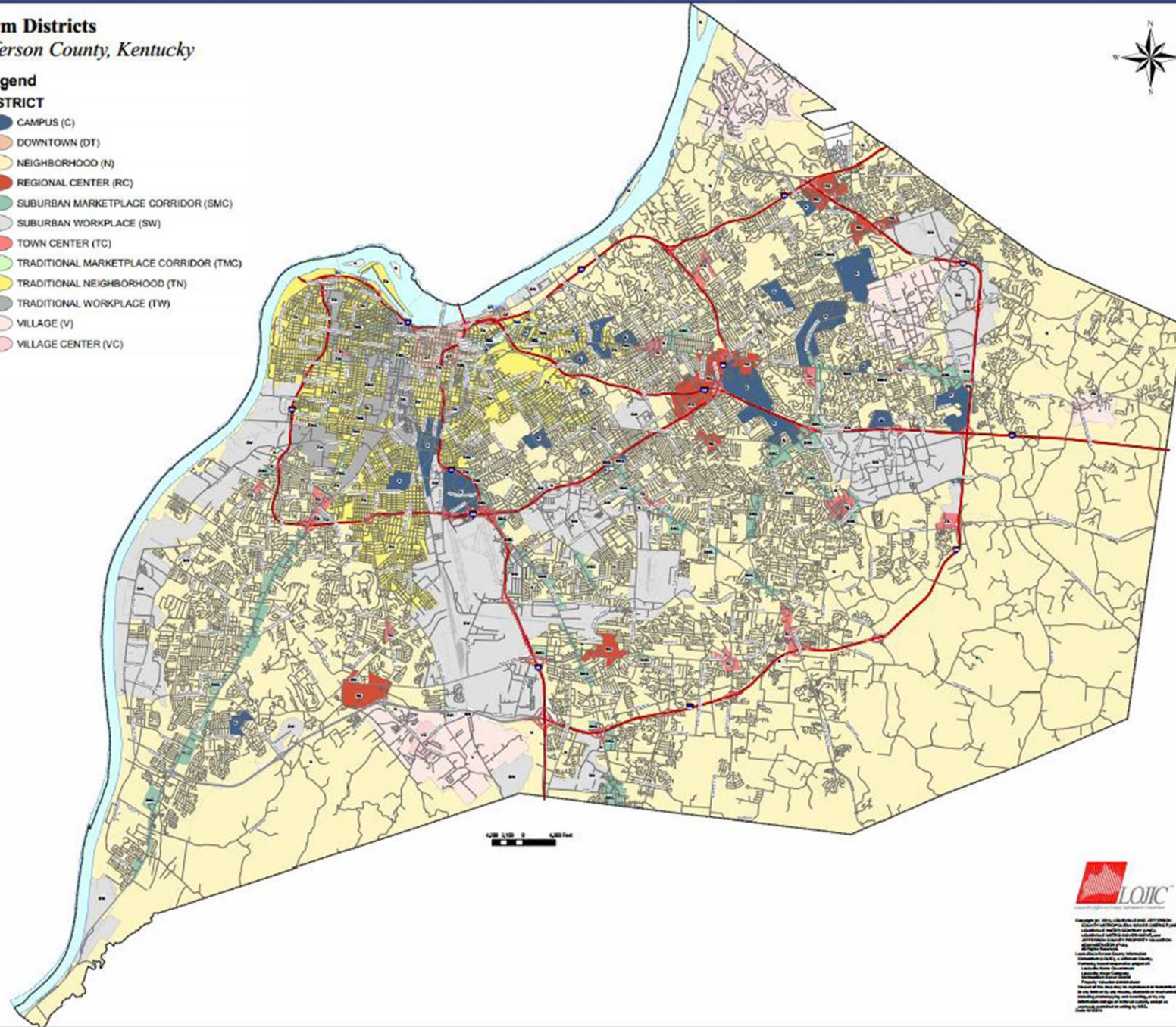
Traditional Form	Suburban Form
Downtown	Regional Center
Traditional Marketplace Corridor	Suburban Marketplace Corridor
Village Center	Village Outlying
Traditional Workplace	Suburban Workplace
Traditional Neighborhood	Neighborhood
Town Center	Campus

Jefferson County, Kentucky

Legend

DISTRICT

-  CAMPUS (C)
-  DOWNTOWN (DT)
-  NEIGHBORHOOD (N)
-  REGIONAL CENTER (RC)
-  SUBURBAN MARKETPLACE CORRIDOR (SMC)
-  SUBURBAN WORKPLACE (SW)
-  TOWN CENTER (TC)
-  TRADITIONAL MARKETPLACE CORRIDOR (TMC)
-  TRADITIONAL NEIGHBORHOOD (TN)
-  TRADITIONAL WORKPLACE (TW)
-  VILLAGE (V)
-  VILLAGE CENTER (VC)

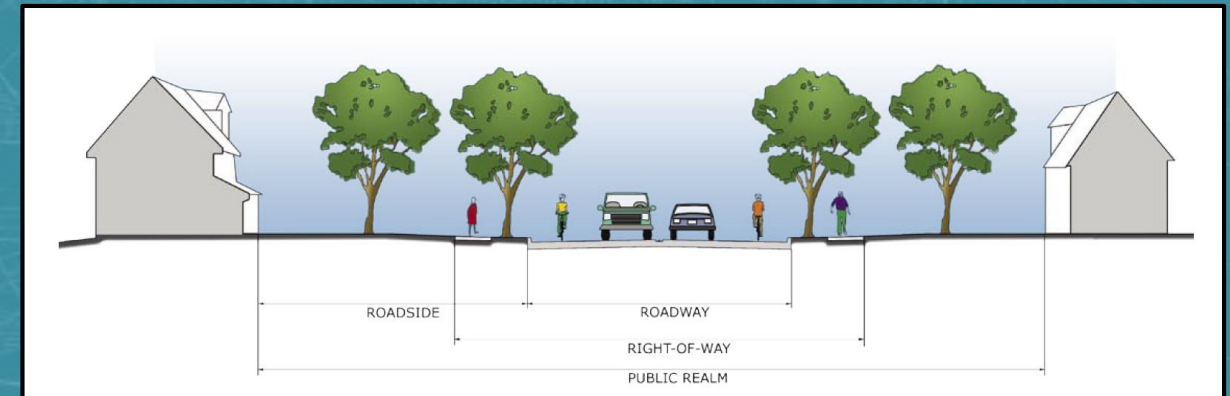


Geography 301, 302, 303, 304, 305, 306, 307, 308, 309, 310, 311, 312, 313, 314, 315, 316, 317, 318, 319, 320, 321, 322, 323, 324, 325, 326, 327, 328, 329, 330, 331, 332, 333, 334, 335, 336, 337, 338, 339, 340, 341, 342, 343, 344, 345, 346, 347, 348, 349, 350, 351, 352, 353, 354, 355, 356, 357, 358, 359, 360, 361, 362, 363, 364, 365, 366, 367, 368, 369, 370, 371, 372, 373, 374, 375, 376, 377, 378, 379, 380, 381, 382, 383, 384, 385, 386, 387, 388, 389, 390, 391, 392, 393, 394, 395, 396, 397, 398, 399, 400, 401, 402, 403, 404, 405, 406, 407, 408, 409, 410, 411, 412, 413, 414, 415, 416, 417, 418, 419, 420, 421, 422, 423, 424, 425, 426, 427, 428, 429, 430, 431, 432, 433, 434, 435, 436, 437, 438, 439, 440, 441, 442, 443, 444, 445, 446, 447, 448, 449, 450, 451, 452, 453, 454, 455, 456, 457, 458, 459, 460, 461, 462, 463, 464, 465, 466, 467, 468, 469, 470, 471, 472, 473, 474, 475, 476, 477, 478, 479, 480, 481, 482, 483, 484, 485, 486, 487, 488, 489, 490, 491, 492, 493, 494, 495, 496, 497, 498, 499, 500, 501, 502, 503, 504, 505, 506, 507, 508, 509, 510, 511, 512, 513, 514, 515, 516, 517, 518, 519, 520, 521, 522, 523, 524, 525, 526, 527, 528, 529, 530, 531, 532, 533, 534, 535, 536, 537, 538, 539, 540, 541, 542, 543, 544, 545, 546, 547, 548, 549, 550, 551, 552, 553, 554, 555, 556, 557, 558, 559, 560, 561, 562, 563, 564, 565, 566, 567, 568, 569, 570, 571, 572, 573, 574, 575, 576, 577, 578, 579, 580, 581, 582, 583, 584, 585, 586, 587, 588, 589, 590, 591, 592, 593, 594, 595, 596, 597, 598, 599, 600, 601, 602, 603, 604, 605, 606, 607, 608, 609, 610, 611, 612, 613, 614, 615, 616, 617, 618, 619, 620, 621, 622, 623, 624, 625, 626, 627, 628, 629, 630, 631, 632, 633, 634, 635, 636, 637, 638, 639, 640, 641, 642, 643, 644, 645, 646, 647, 648, 649, 650, 651, 652, 653, 654, 655, 656, 657, 658, 659, 660, 661, 662, 663, 664, 665, 666, 667, 668, 669, 670, 671, 672, 673, 674, 675, 676, 677, 678, 679, 680, 681, 682, 683, 684, 685, 686, 687, 688, 689, 690, 691, 692, 693, 694, 695, 696, 697, 698, 699, 700, 701, 702, 703, 704, 705, 706, 707, 708, 709, 710, 711, 712, 713, 714, 715, 716, 717, 718, 719, 720, 721, 722, 723, 724, 725, 726, 727, 728, 729, 730, 731, 732, 733, 734, 735, 736, 737, 738, 739, 740, 741, 742, 743, 744, 745, 746, 747, 748, 749, 750, 751, 752, 753, 754, 755, 756, 757, 758, 759, 760, 761, 762, 763, 764, 765, 766, 767, 768, 769, 770, 771, 772, 773, 774, 775, 776, 777, 778, 779, 780, 781, 782, 783, 784, 785, 786, 787, 788, 789, 790, 791, 792, 793, 794, 795, 796, 797, 798, 799, 800, 801, 802, 803, 804, 805, 806, 807, 808, 809, 810, 811, 812, 813, 814, 815, 816, 817, 818, 819, 820, 821, 822, 823, 824, 825, 826, 827, 828, 829, 830, 831, 832, 833, 834, 835, 836, 837, 838, 839, 840, 841, 842, 843, 844, 845, 846, 847, 848, 849, 850, 851, 852, 853, 854, 855, 856, 857, 858, 859, 860, 861, 862, 863, 864, 865, 866, 867, 868, 869, 870, 871, 872, 873, 874, 875, 876, 877, 878, 879, 880, 881, 882, 883, 884, 885, 886, 887, 888, 889, 890, 891, 892, 893, 894, 895, 896, 897, 898, 899, 900, 901, 902, 903, 904, 905, 906, 907, 908, 909, 910, 911, 912, 913, 914, 915, 916, 917, 918, 919, 920, 921, 922, 923, 924, 925, 926, 927, 928, 929, 930, 931, 932, 933, 934, 935, 936, 937, 938, 939, 940, 941, 942, 943, 944, 945, 946, 947, 948, 949, 950, 951, 952, 953, 954, 955, 956, 957, 958, 959, 960, 961, 962, 963, 964, 965, 966, 967, 968, 969, 970, 971, 972, 973, 974, 975, 976, 977, 978, 979, 980, 981, 982, 983, 984, 985, 986, 987, 988, 989, 990, 991, 992, 993, 994, 995, 996, 997, 998, 999, 1000.

Plan 2040

- **Recommended the creation of two new form districts:**
 - **Urban Center Neighborhood**
 - **Conservation Neighborhood**

- Access management
- Street design and naming
- Transit
- Traffic and air quality assessment



Landscaping and Tree Canopy

- **Landscape design**
- **Tree canopy requirements**
- **Parkways and scenic corridors**
- **Streetscape master plans**



Other Standards

- Subdivision regulations
- Sign regulations
- Parking regulations
- Procedures



Questions



PROCESS AND EDUCATION

Development Process

Office of Planning and
Design Services



DEVELOP
LOUISVILLE
LOUISVILLE FORWARD

BOZA

- **Board of Zoning Adjustment (BOZA) hears the following cases:**
- **Conditional Use Permits (CUP)**
 - **Short Term Rentals**
 - **Outdoor Alcohol Sales and consumption**
 - **Daycares**
- **Variances**
 - **Fence height**
 - **Building Height**
 - **Buildings in setbacks**

CUP Process

Pre-
Application
Submittal

- Agency Review
- Neighborhood Meeting

Formal
Application

- Agency Review

BOZA Public
Hearing

- Final Action



Variance Process

Application
Submittal

- Agency Review



BOZA Public
Hearing

- Final Action

Planning Commission

- Committees of the Planning Commission
 - Development Review Committee (DRC)
 - Land Development and Transportation (LD&T)
- Types of cases the Planning Commission hears:
 - Zoning Change
 - Development Plans
 - Subdivisions

Zoning Process

Pre-Application
Submittal

- Agency Review
- Neighborhood Meeting

Formal
Submittal

- Agency Review

Land
Development &
Transportation
Committee
(LD&T)

- Application Ready for Public Hearing
- Schedules Planning Commission Date

Planning
Commission

- Recommendation to Legislative Body

Legislative
Body

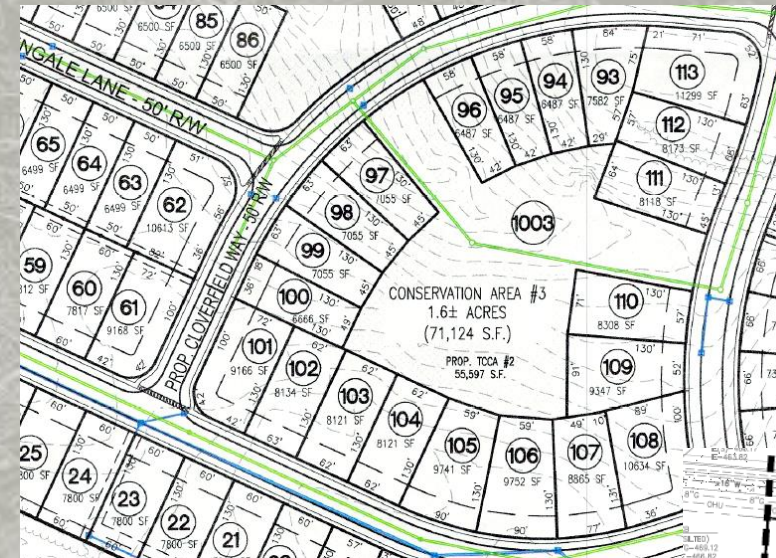
- Final Action

Development Plan/Subdivision Process

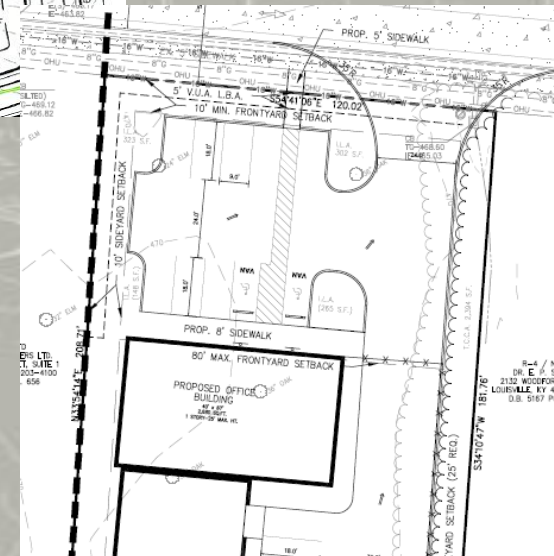
Application Submittal

- Agency Review

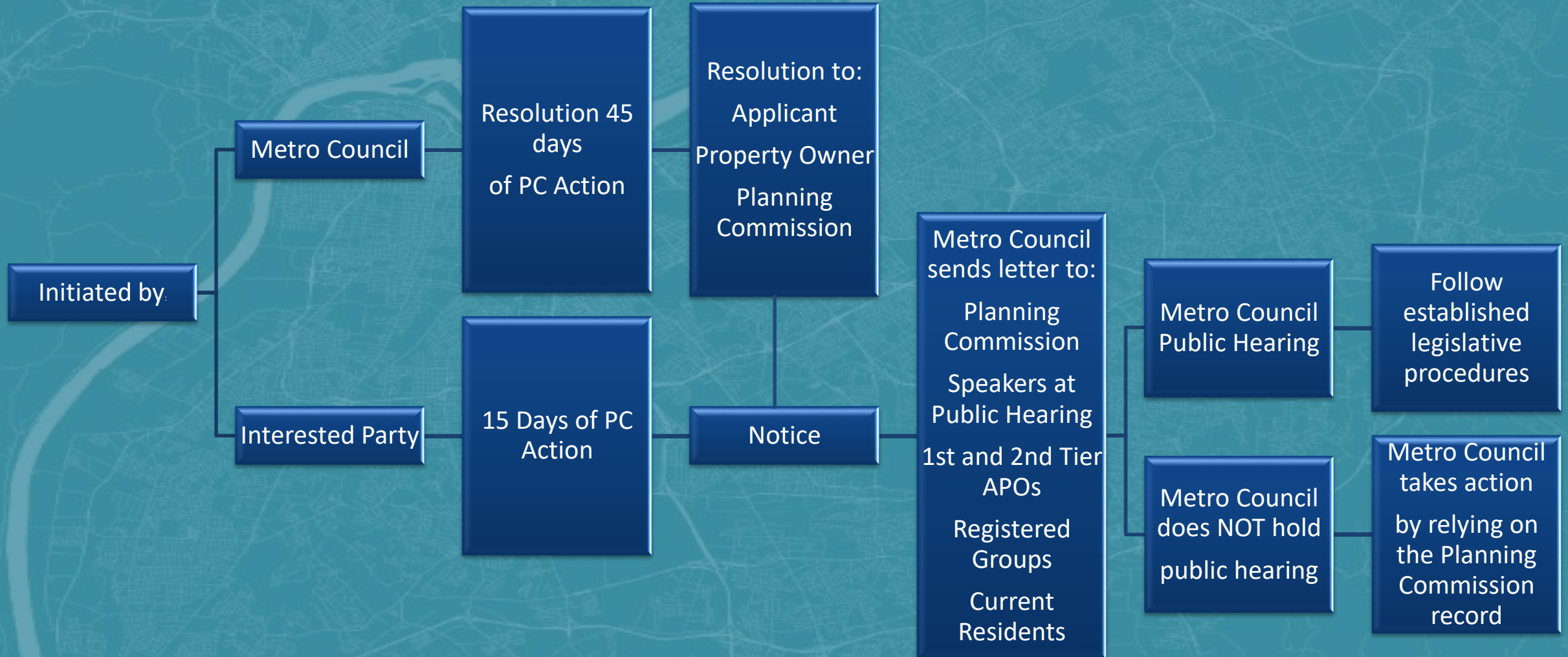
Land Development and Transportation (LD&T) or Development Review Committee (DRC)



- Final Action



Legislative Review of Development Plans



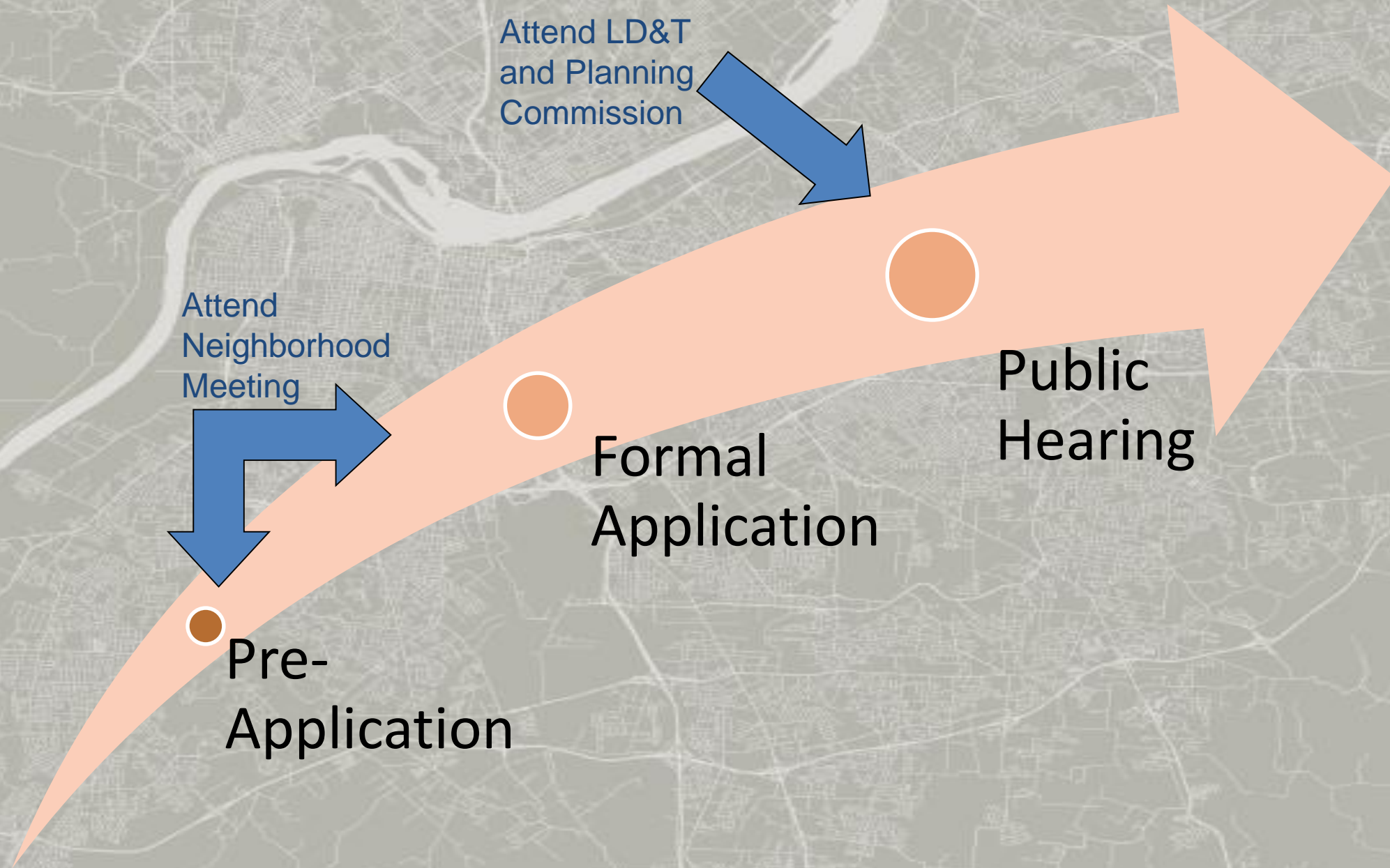
Ministerial vs. Discretionary

- **Ministerial:**
 - **Category 3 Development Plans**
 - **Preliminary Subdivisions**
- **Discretionary:**
 - **Changes in Zoning**
 - **Development Plans**
 - **Waivers**

How Citizens Get Involved

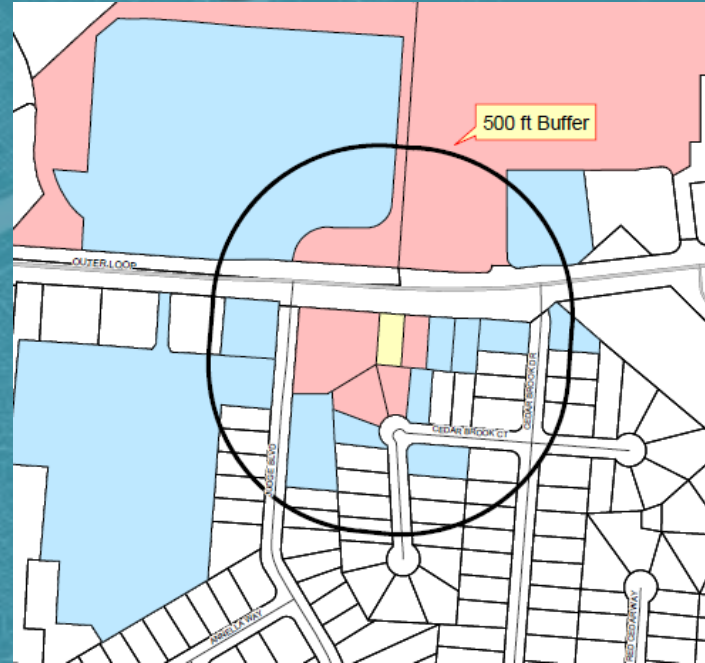
- Attend neighborhood meetings
- Sign up for neighborhood notifications for your council district
- Use resources to educate yourself and community
- Contact case manager
- Attend public meetings

Citizen Involvement Timeline



Noticing

- Notices Sent by Email and USPS
 - Prior to Neighborhood Meeting
 - Prior to LD&T
 - Prior to PC
- Notices sent to:
 - 1st and 2nd tier APO & current residents
 - Gov Delivery Recipients
 - PDS Staff
- Sign Posted (KRS 100)
 - Prior to PC
- Legal Ad (KRS 100)
 - Prior to PC



PUBLIC HEARING
Louisville Metro Planning
Commission
June 16, 2016 at 1:00 P.M.
Old Jail Building, 514 W. Liberty
Zoning Change for Case:
#16ZONE1012
At 5900 US Highway 42

Cases may be inspected in the
office of Metro Planning and
Design, 444 S. 5th Street, Suite
300, Louisville, KY. For special
accommodations or additional
information, contact Planning
at 574-6230 or www.louisvilleky.gov/planningdesign. TDD 1-800-648-6056.



Postcard Notice



NOTICE OF PUBLIC HEARING

You are invited to attend a review for a **CHANGE IN ZONING** from R-1 (Single Family Residential), R-6 (Multi-Family Residential), C-1 (Commercial), and C-2 Commercial to PDD (Planned Development District) with a **WAIVER** and a **ROAD CLOSURE** of Beargrass Avenue.

Subject Property: **2297, 2301, 2313, 2345 LEXINGTON RD**
Case Number: **22-ZONE-0043 AND 22-STRCLOSURE-0017**
Case Manager: **JULIA WILLIAMS** (julia.williams@louisvilleky.gov)

Meeting Type: **PLANNING COMMISSION**
Meeting Date: **THURSDAY, DECEMBER 1, 2022**
Time: Meeting will begin at **1:00 PM** and continue until all cases are heard
Location: **514 W Liberty Street, 40202**

Learn how to watch and participate online at
<https://louisvilleky.gov/government/upcoming-public-meetings>

To view documents related to this proposal, please visit <https://aca-prod.accela.com/LJCMG> or:
Louisville Metro Planning and Design Services (Hours: 8:00 AM to 5:00 PM)
444 S. 5th Street, 3rd Floor, Louisville, KY 40202
(502) 574-6230

Or visit <https://louisvilleky.gov/government/planning-design> for:

- More information on zoning processes
- Public comment opportunities
- Applications for a petition for a night hearing, including procedures to change the time and/or location of a public hearing to 6:00 pm or later downtown, or to a convenient location.
- Visit <https://louisville.legistar.com/Calendar.aspx> for meeting agenda and staff report

Persons who desire special accommodations should contact the Planning Commission office at (502) 574-6230 at least one week prior to this meeting. TDD users please use the Relay Service, 1-800-648-6056.



Neighborhood Notification



- <https://public.govdelivery.com/accounts/KYLOUISVILLE/subscriber/new>

Weekly Activity Report



LOUISVILLE METRO PLANNING & DESIGN SERVICES

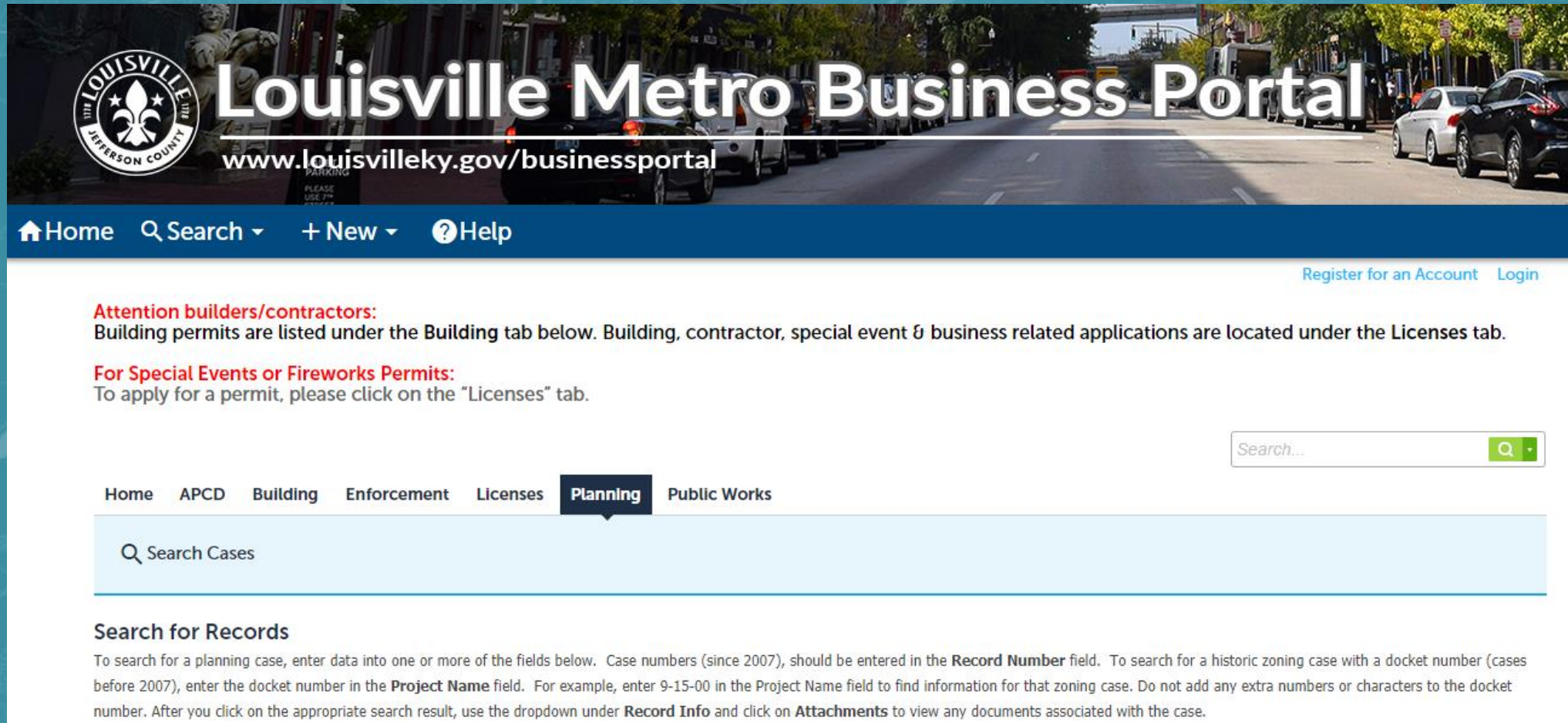
Inter-Agency Review Agenda

12/2/2020

NEW APPLICATIONS

Case #	Project Name	Address	Council District	Submittal Date	Comments Due Date	Case Manager
Certificate of Appropriateness						
20-COA-0264	Clifton- Painting a certificate of appropriateness to paint front porch pillars.	316 S EWING AVE	09	11/24/2020		Charles Fister
20-COA-0265	Old Louisville Historic Restoration NPS & SHPO-compliant restoration of c. 1895 residence located in the TNZD.	1338 S FLOYD ST	06	11/25/2020		Katherine Groskreutz
20-COA-0266	Old Louisville - Renovate Rear Section of the Building Restore the upper porch and railing, replace siding, add door to basement	1455 S 6TH ST, Bldg	06	11/29/2020		Katherine Groskreutz
Change in Zoning-Form District						
20-ZONE-0117	Pirouette Ave apts A change in zoning from PRD to R6 to allow 136 unit apartment community on 8.92 acres.	9418 PIROUETTE AVE	13	11/30/2020	12/08/2020	Joel Dock
Change in Zoning-Form District Pre-Application						
20-ZONEPA-0115	Snow Removal Equipment Building A change in zoning pre-application to rezone 7.91 acres of R-6 to C-1 for a storage facility.	4350 PARK BLVD	21	11/24/2020	12/07/2020	Joel Dock
20-ZONEPA-0116	KJS Multi-Family Development A change of zoning from R4 Residential & C1 Commercial to R7 Residential is requested for 18.01 +/- acres located at 4805, 4809, 4811, 4813, 4901, and 4907 Bardstown Road to allow 348 multi-family residential units in 15 three story buildings with a dog park, clubhouse, and open space.	4805 BARDSTOWN RD	22	11/30/2020	12/16/2020	Dante St. Germain
20-ZONEPA-0118	Hoba Gallery A change in zoning pre-application to rezone .19 acres from UN to CR to allow for an existing residential structure to be an art gallery.	3119 PORTLAND AVE	05	11/30/2020	12/09/2020	Joel Dock
Conditional Use Permit Pre-Application						
20-CUPPA-0156	Short Term Rental A conditional use permit pre application for a short term rental on 0.16 acres in the R4 zoning district	1321 HOWARD ST	21	11/25/2020	12/02/2020	Zachary Schwager
District Development Plan						
20-DDP-0073	265 Logistics Park A revised district development plan application to create a 98800 square foot office & warehouse on 24.2 acres in a M-3 zoning district.			11/30/2020	12/08/2020	Jay Luckett
Floyds Fork Overlay Review						

Accela Information Portal



The screenshot shows the Louisville Metro Business Portal website. At the top, there is a banner with the Louisville Metro logo on the left and the text "Louisville Metro Business Portal" in large white letters. Below the banner is a navigation bar with links: Home, Search, New, and Help. On the right side of the navigation bar, there are links for "Register for an Account" and "Login". Below the navigation bar, there is a section for "Attention builders/contractors:" which states that building permits are listed under the Building tab and that building, contractor, special event, and business related applications are located under the Licenses tab. Below this, there is a section for "For Special Events or Fireworks Permits:" which states that to apply for a permit, users should click on the "Licenses" tab. To the right of this text is a search bar with the placeholder text "Search..." and a green search button. Below the search bar is a horizontal menu with tabs: Home, APCD, Building, Enforcement, Licenses, Planning (which is highlighted with a dark blue background), and Public Works. Below the menu is a light blue search bar with the placeholder text "Search Cases". Below the search bar is a section titled "Search for Records" which contains instructions on how to search for a planning case, including details about case numbers and project names.

Louisville Metro Business Portal
www.louisvilleky.gov/businessportal

Home Search New Help

[Register for an Account](#) [Login](#)

Attention builders/contractors:
Building permits are listed under the **Building** tab below. Building, contractor, special event & business related applications are located under the **Licenses** tab.

For Special Events or Fireworks Permits:
To apply for a permit, please click on the "Licenses" tab.

Search...

Home APCD Building Enforcement Licenses **Planning** Public Works

Search Cases

Search for Records
To search for a planning case, enter data into one or more of the fields below. Case numbers (since 2007), should be entered in the **Record Number** field. To search for a historic zoning case with a docket number (cases before 2007), enter the docket number in the **Project Name** field. For example, enter 9-15-00 in the Project Name field to find information for that zoning case. Do not add any extra numbers or characters to the docket number. After you click on the appropriate search result, use the dropdown under **Record Info** and click on **Attachments** to view any documents associated with the case.

- <https://aca-louisville.accela.com/ljcmg/>

Legistar

- <https://louisville.legistar.com/Calendar.aspx>

Louisville Metro Government

[Louisvilleky.gov](#) [Legislation](#) [Calendar](#) [Metro Council](#) [All Boards & Committees](#) [People](#) [2008-2013 Archives](#) [Planning Sub-Committees](#)

[Sign In](#)

[f](#) [t](#) [+](#) [Share](#) [RSS](#) [Alerts](#)

[List View](#) [Calendar View](#)

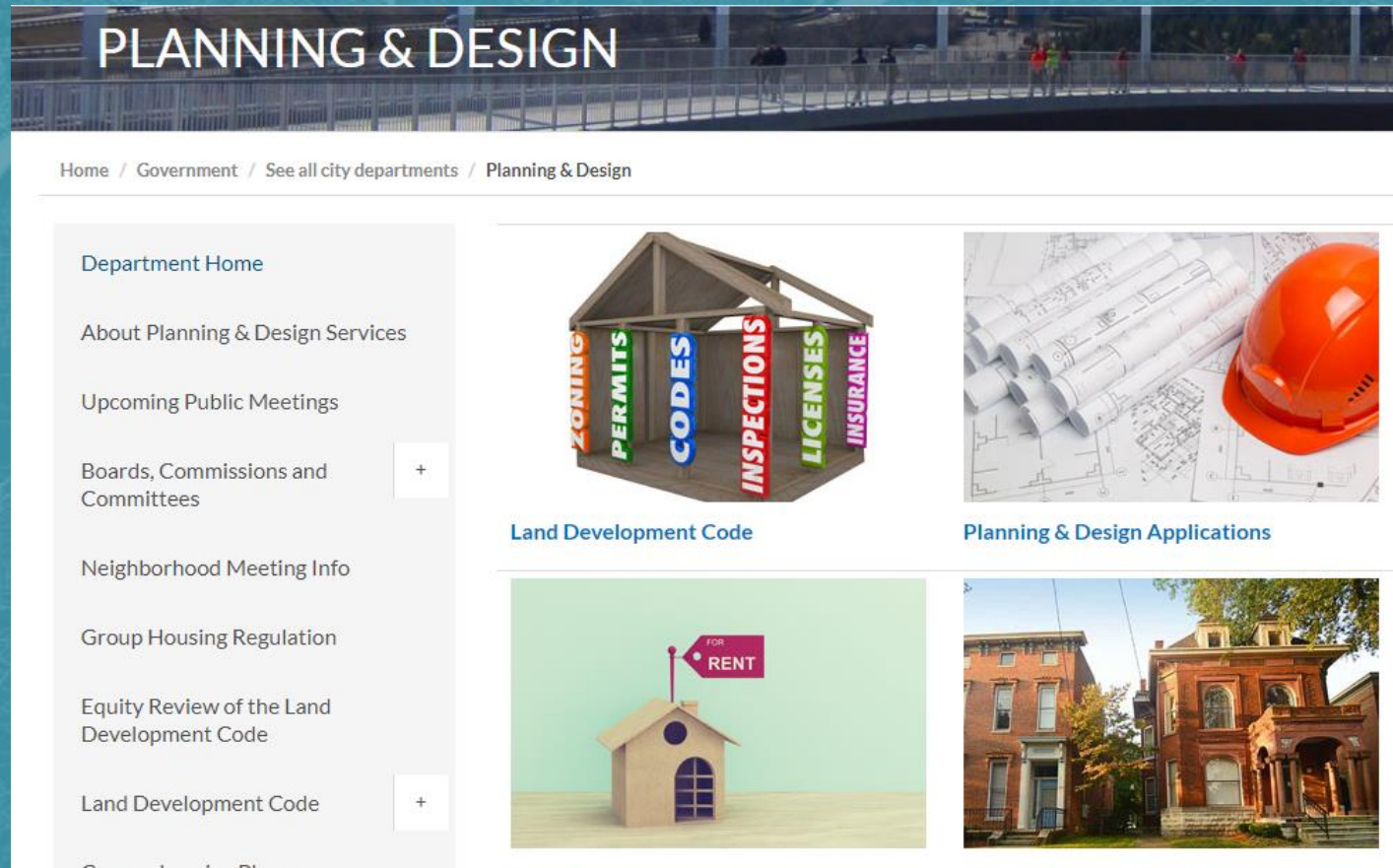
Search: [This Month](#) [All All Boards & Committees](#) ☐ notes ☐ closed captions

[Search Calendar](#) [Help](#)

26 records [Group](#) [Export](#)

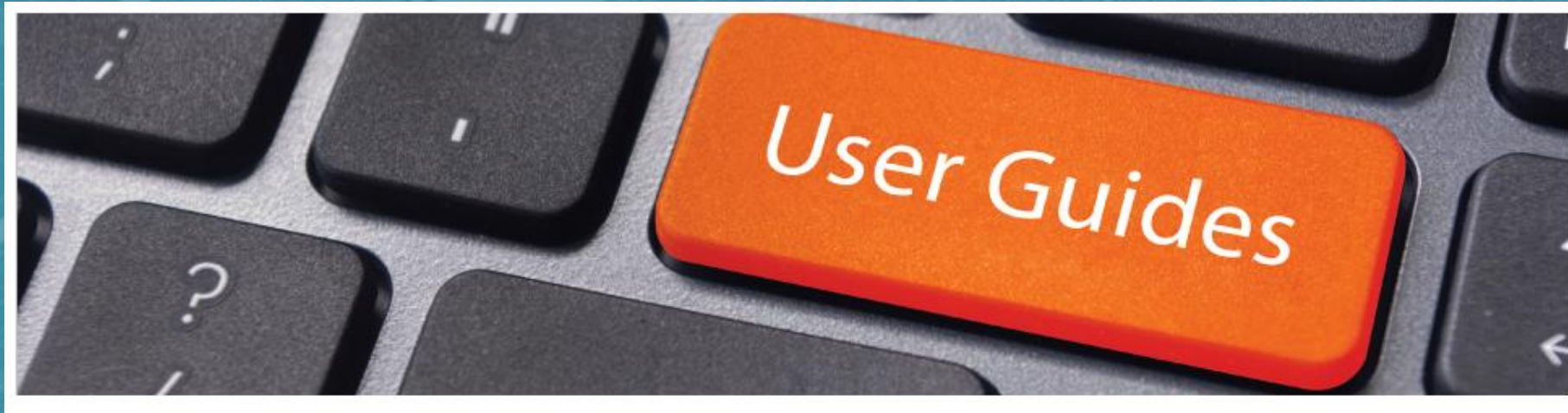
Name	Meeting Date	Meeting Time	Meeting Location	Meeting Details	Agenda	Action Summary/Minutes	Video
Board of Zoning Adjustment	12/21/2020	1:00 PM	Online Via Webex	Meeting details	Not available	Not available	Not available
Code Enforcement Board	12/18/2020	9:30 AM	Old Jail Building	Meeting details	Agenda	Not available	Not available
Historic Landmarks & Preservation Dist. Commission	12/17/2020	9:00 AM	Online via Webex	Meeting details	Not available	Not available	Not available
Development Review Committee	12/16/2020	1:00 PM	Online via Webex	Meeting details	Not available	Not available	Not available
VAPStat Joint Meeting	12/14/2020	3:00 PM	Old Jail Auditorium <i>Meeting run via Cisco WebEx Video</i>	Meeting details	Not available	Not available	Not available
Code Enforcement Board	12/11/2020	9:30 AM	Old Jail Building	Meeting details	Agenda	Not available	Not available
Metro Council	12/10/2020	6:00 PM	Council Chambers	Meeting details	Not available	Not available	Not available
Committee of the Whole	12/10/2020	5:15 PM	First Floor Conference Room	Meeting details	Not available	Not available	Not available
Land Development & Transportation Committee	12/10/2020	1:00 PM	Online via Webex	Meeting details	Not available	Not available	Not available
Committee on Committees	12/8/2020	4:00 PM	Council Chambers	Meeting details	Not available	Not available	Not available
Board of Zoning Adjustment	12/7/2020	1:00 PM	Online Via Webex	Meeting details	Agenda	Not available	Not available

Planning and Design



- <https://louisvilleky.gov/government/planning-design>

User Guide



- <https://louisvilleky.gov/government/planning-design/user-guides>

LOJIC

• www.lovic.org

The screenshot displays the LOJIC Online GIS application interface. The top navigation bar includes the LOJIC logo, a search bar, and links for Maps, Data, Services, News, About, and Search. Below the navigation bar, the main header reads "LOJIC Online" and "A GIS Partnership to Meet the Growing Needs of Louisville, KY".

The central map area shows a street grid in Louisville, KY, with labels for "Louisville Gardens", "Founder's Square", "CATHEDRAL SCHOOL CT", and "CATHEDRAL WAY". A purple pin is placed on a lot labeled "DT". The map includes a search bar labeled "Search Addresses" and a scale bar at the bottom left.

On the right side, there is a "Layers" panel with a list of map layers and their status:

- ☐ Utilities
- ☒ Property
- ☒ Transportation
- ☐ Taxing Districts
- ☐ Environmental
- ☐ Preservation
- ☐ Floodplain
- ☒ Planning
 - ☐ Jefferson Related Cases
 - ☒ Appeal
 - ☒ Cup
 - ☒ ESR
 - ☒ Variance
 - ☐ Jefferson Scenic Corridors and Parkways
 - ☒ Gene Snyder Freeway
 - ☒ Parkways

Questions???

