

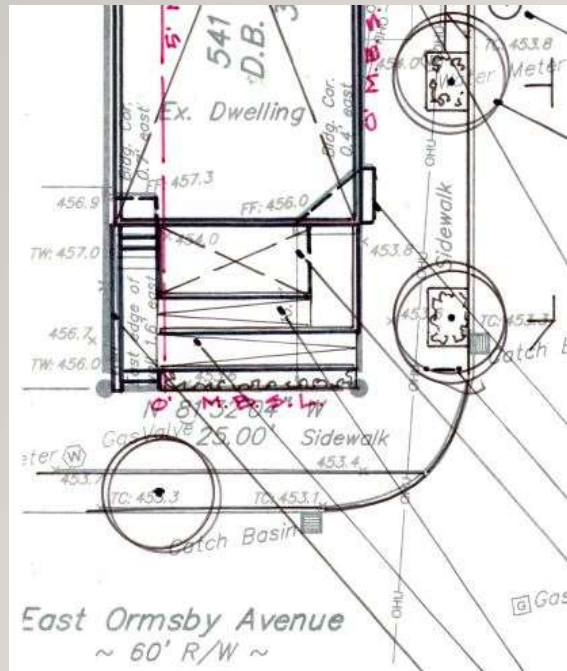
541 E. ORMSBY AVE.

C-2 REZONING REQUEST WITH BOUND OUT USES

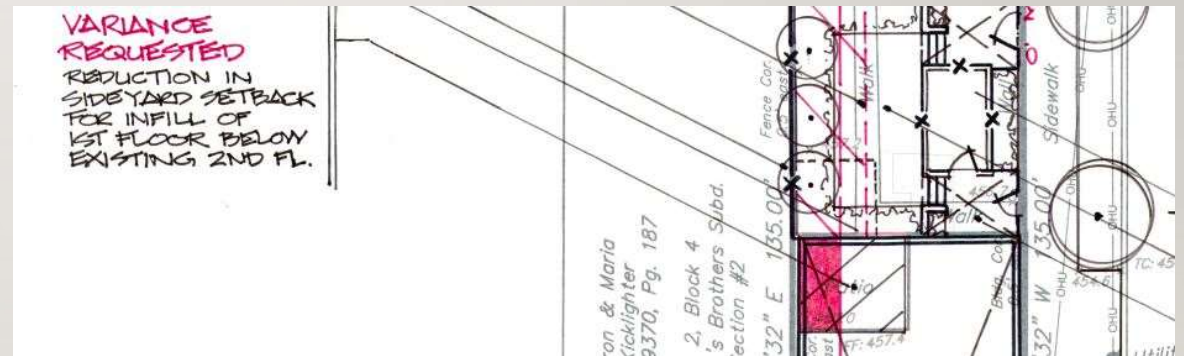
CASE NUMBER 23-ZONEPA-0057



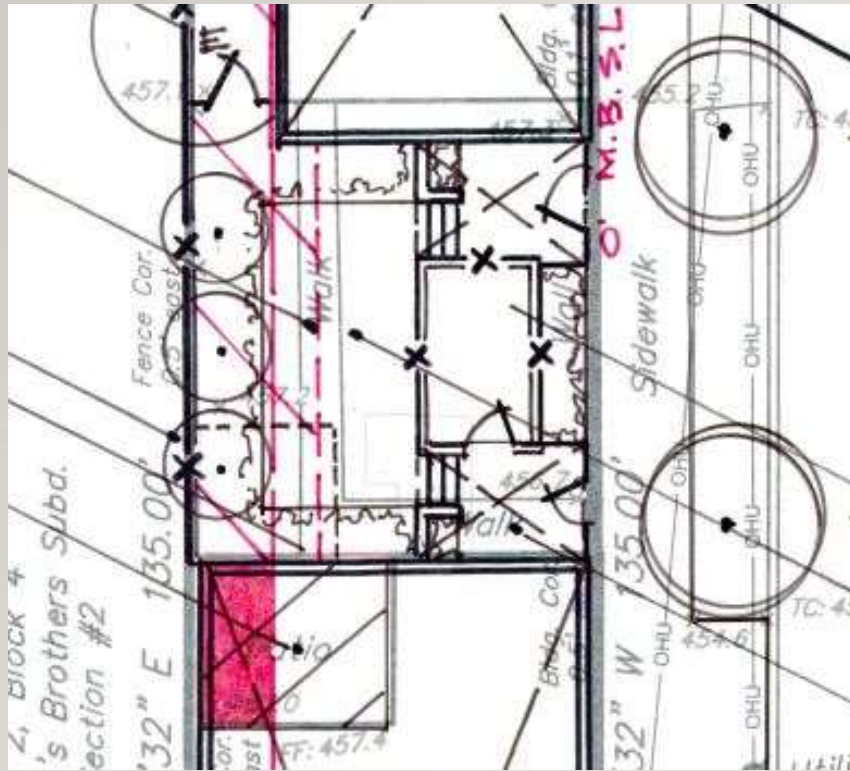
FRONT VIEW - EXISTING



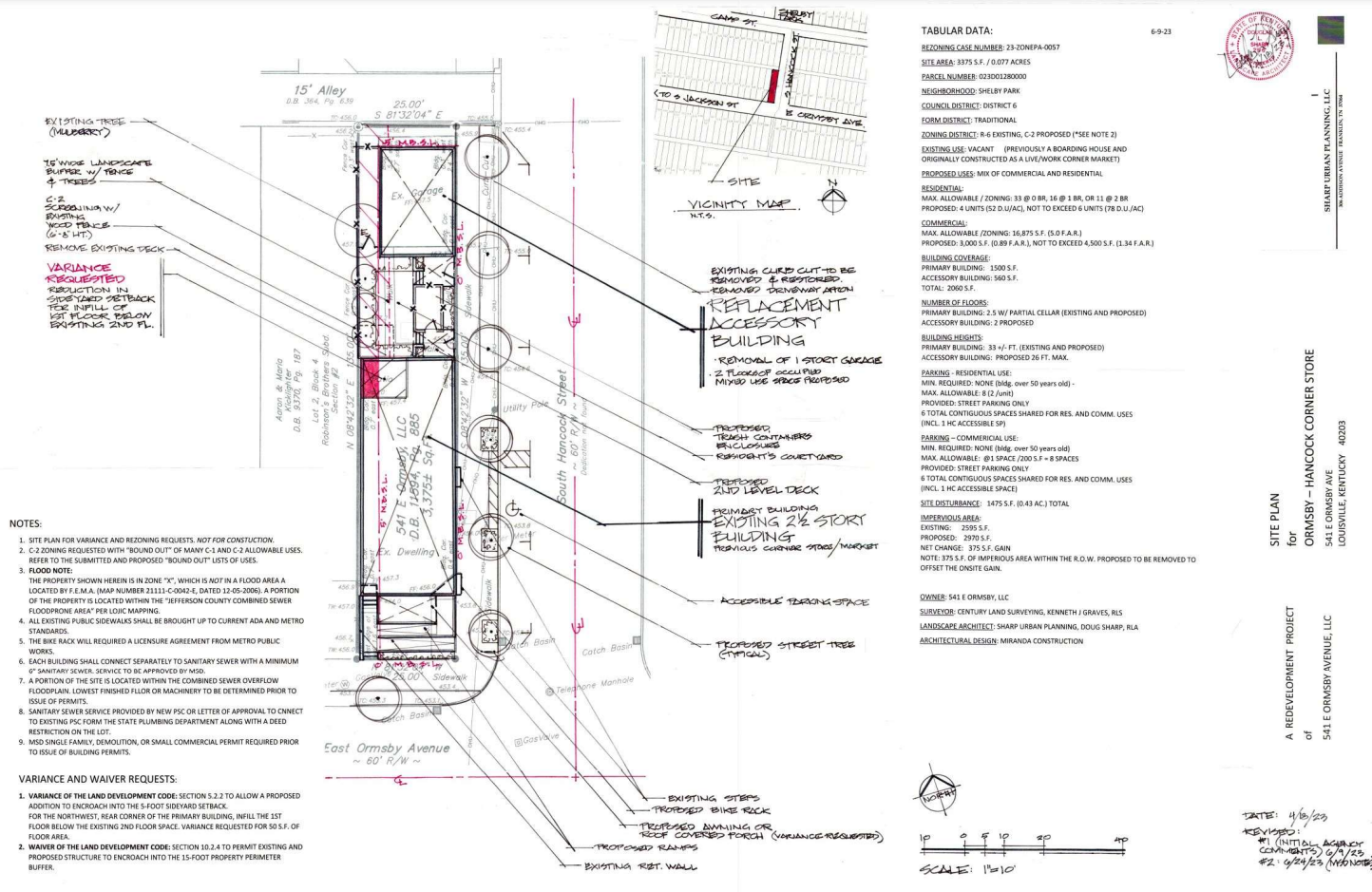
FRONT VIEW - PROPOSED



SIDEYARD VARIANCE REQUEST - REAR VIEW



PLAN VIEW – REAR YARD PROPOSED



DEVELOPMENT PLAN



ADAPTIVE MIXED USE / C-2 ZONING REQUESTED WITH BOUND OUT USES

541 E. ORMSBY AVE. / LOUISVILLE, KENTUCKY

