

# BERRYTOWN

---

In the 1870s, Berrytown and Griffytown were created by freed African Americans. In 1915 Anchorage PTA got a train carrying the Liberty Bell to stop at neighboring schools, including Berrytown and Griffytown. Until 1934, the Interurban Car System electric trolley transported residents into Louisville.

*Presented by Louisville and Jefferson County  
African American Heritage Committee, Inc.*

1996

KENTUCKY HISTORICAL SOCIETY

KENTUCKY DEPARTMENT OF HIGHWAYS

1982

# BERRYTOWN

---

This eastern Jefferson County community began with five acres purchased in 1874 by Alfred Berry, a freedman. Other Berrytown founders were Wm. Butler, Sallie Carter, and Kidd Williams, all of whom bought land from Samuel L. Nock, a wealthy businessman.



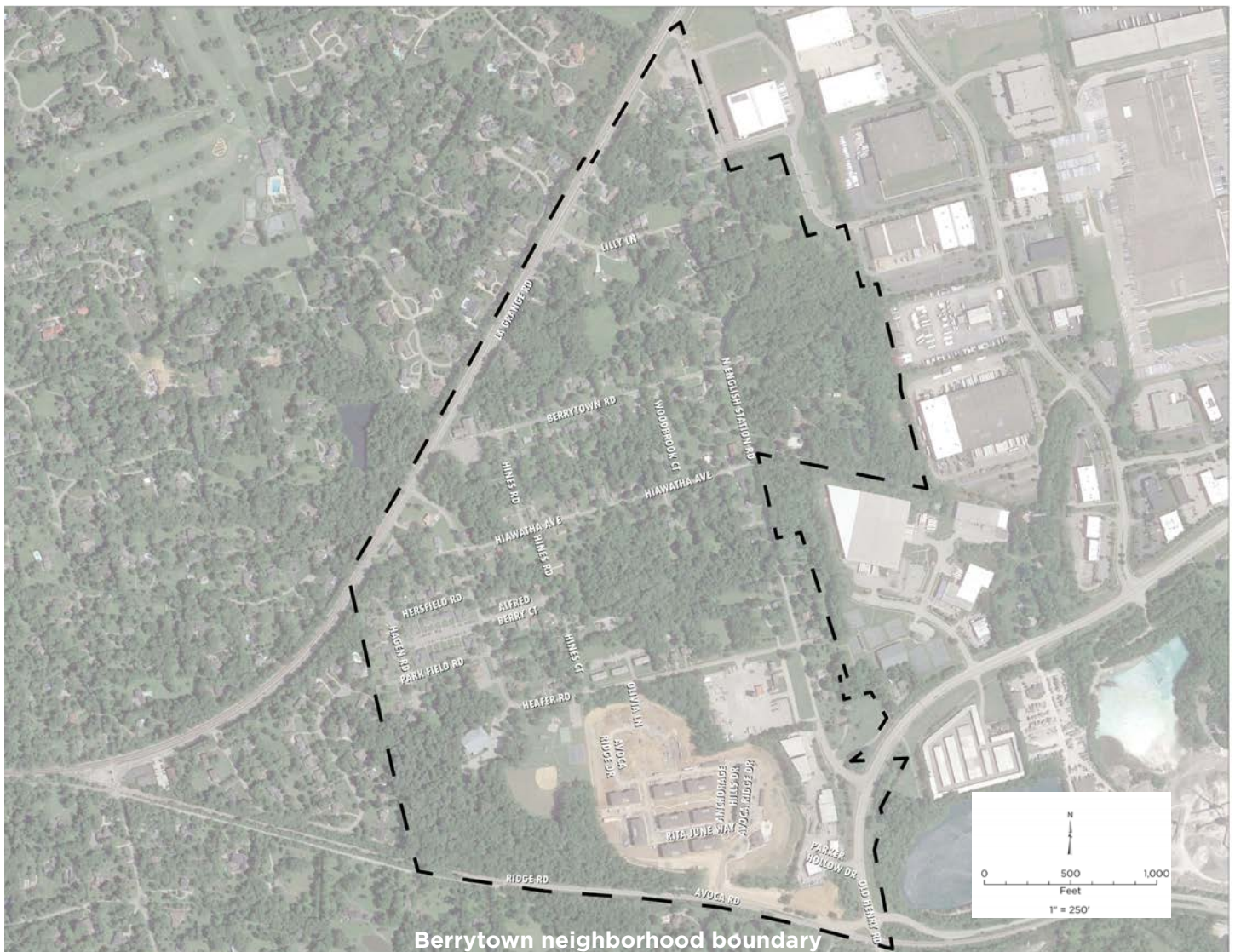
## Plan Components

Berrytown residents created a vision statement for the neighborhood that encapsulates their values and desires for the future. The plan covers the required components of a neighborhood plan, per Metro Ordinance Chapter 161, which includes Executive Summary, Introduction, Neighborhood Identity, Land Use and Community Form, Mobility, and Recommendations/Implementation sections.

Additionally, the plan covers: the rich history of Berrytown that is the rationale for the Vision Statement; housing which is a new requirement but reflects the needs of the area; \$200,000 of funding secured by Metro Council President Markus Winkler for improvements to Berrytown Park; and Quality of Life elements, which became a focal point of the plan.

## Berrytown Vision Statement

Berrytown is a safe, welcoming, and inclusive community that preserves the historic Black legacy by promoting the continuation of home ownership. It is a thriving and sustainable community, supported by resilient infrastructure, with safe, pedestrian-friendly streets that provide access to jobs, parks, transit, schools, businesses, and other resources. Berrytown fosters a civically engaged community with a small town feel in a forested neighborhood.



## Berrytown Certified Organizations with the State of Kentucky

\*These descriptions were written and submitted by members of the referenced organizations and are not verified by Louisville Metro Government.

**Berrytown Neighborhood Association** - A nonprofit 501(c)(3) tax-exempt organization that seeks to provide a voice to the Berrytown Community, to raise awareness and involvement in matters that affect the community, to embrace diversity while preserving our African-American heritage, to advocate for sustainable and affordable housing opportunities, and to increase self-sufficiency of the neighborhood.

**Berrytown Community Land Trust (CLT)** – A nonprofit 501(c)(3) tax-exempt organization, that seeks to acquire, own, lease and manage residential and commercial real estate. The organization will also seek to create and support community garden programs to increase access to fresh, locally grown green leafy vegetables. The Berrytown CLT will provide opportunities for home ownership and long-term rentals for low-access and low-income families, and be an advocate for economic social justice. The organization will achieve these goals through a board of Berrytown CLT residents and community members dedicated to the vision of resident-powered development on community-owned land.

**Berrytown Development Corporation** – A nonprofit 501(c)(3) tax-exempt organization that oversees the purchase, development, and management of the Berrytown CLT real estate assets. The organization will be responsible for management of the construction of affordable, sustainable, single, and multi-family housing projects and rental units. They will also seek to construct a food pantry or neighborhood fresh/farmers market to increase the flow and access to locally grown fresh and healthy food products including fresh produce, dairy, and meats, and an Airstream pop-up food trailer café to serve coffee, soups, sandwiches, and healthy grab-and-go semi-prepared meals for cook-at-home options. They will also seek to be involved in a wide range of community services, such as healthcare, education, and job opportunities, green entrepreneurship, promoting and fostering economic and commercial development, and other social programs.

**Berrytown Urban Agriculture Youth Summer Camp** – A nonprofit 501(c)(3) tax-exempt organization that seeks to collaborate with the First Baptist Church of Anchorage and neighboring churches to create and host a youth summer reading and math enrichment program at the Church. This 8-week camp will be offered to 3rd to 5th-graders and middle school students, five days a week from June through July. The Urban Agriculture camp will be held in the afternoon at Berrytown CLT Community Garden, which will consist of a full-scale, fully equipped greenhouse, to provide a safe hands-on learning environment that will promote education and training on urban farming methods and safe food handling practices.

## Berrytown Neighborhood Plan

### Priority

L = Low Priority  
M = Medium Priority  
H = High Priority

### Time Frame

S = Short Term (1-3 years)  
M = Mid Term (4-6 years)  
L = Long Term (7+ years)  
O = Ongoing

## LAND USE RECOMMENDATIONS

**Strategy Recommendation Priority Timeframe Next Steps and Responsible Parties**

### Objective 1: Promote a resilient and civically engaged community.

#### Recommendation 1.1: Create a Neighborhood Association with 501(c)3 status.

1.1.1	Add the Neighborhood Association to the notification list for development applications in the area. Notify members of upcoming cases.	H	O	Berrytown Neighborhood Association (BNA) to create a notification list for all members BNA to create a series of next steps when upcoming cases occur BNA to work with Metro staff to understand Berrytown's concerns with upcoming cases
1.1.2	Add civically engaged community members to the notification list for development applications in the area.	L	L	All parties to promote the link to the city email subscriptions for notifications: <a href="https://public.govdelivery.com/accounts/KYLOUISVILLE/subscriber/new">https://public.govdelivery.com/accounts/KYLOUISVILLE/subscriber/new</a>

### Objective 2: Support and encourage Berrytown's historic housing legacy.

#### Recommendation 2.1: Promote future development that reflects the historic design of the neighborhood.

2.1.1	Seek developers and developments that increase affordable home ownership for residents.	H	S/L	Community Land Trust (CLT) to seek out builders and developers that will work with the CLT CLT to identify project partners All parties to identify funding sources
2.1.2	Encourage infill housing and improvements that build value and are sensitive to the design of the surrounding community.	M	M/L	CLT to review housing types and typical dimensions for Berrytown CLT to identify project partners All parties to identify funding sources
2.1.3	Investigate Community Land Trust status with leadership from the neighborhood.	H	M/L	CLT to investigate other Community Land Trusts (CLT) in the area CLT to review legal framework needed

#### Recommendation 2.2: Work with various partners to decrease the number of vacant and abandoned properties.

2.2.1	Utilize the Berrytown CLT 501(c)3 status to purchase and clean up abandoned properties.	H	O	CLT to identify properties CLT to create a roadmap to purchase properties CLT to work with the city to rehabilitate properties
2.2.3	Invite Louisville Metro staff to speak to the BNA about the root causes of vacant and abandoned properties, and discuss existing and future solutions.	H	O	BNA to learn from Metro staff about the VAP process and share their experiences BNA to create a series of next steps for dealing with Berrytown vacant properties BNA to intervene early in the process through rehabilitation before a property becomes rundown/vacant

#### Recommendation 2.3: Ensure that infill development is consistent with surrounding form.

2.3.1	Evaluate infill standards in suburban contexts in the Land Development Code to make sure design of new developments is consistent.	H	O	BNA to work with Metro staff on the effects of the LDC on a historically low-density community Metro staff to review infill standards in suburban contexts. Metro staff to take request to the Planning Commission for changes
-------	--	---	---	--

## Berrytown Neighborhood Plan

### Priority

L = Low Priority  
M = Medium Priority  
H = High Priority

### Time Frame

S = Short Term (1-3 years)  
M = Mid Term (4-6 years)  
L = Long Term (7+ years)  
O = Ongoing

## HOUSING RECOMMENDATIONS

**Strategy Recommendation Priority Timeframe Next Steps and Responsible Parties**

### Objective 3: Increase and stabilize homeownership.

#### Recommendation 3.1: Develop increased opportunities for owner-occupied housing

3.1.1	Create a neighborhood-wide goal for the home ownership rate in Berrytown (currently 55%) to meet or exceed the home ownership rate for Jefferson County (currently 60%).	H	L	Berrytown Neighborhood Association (BNA) and Community Land Trust (CLT) to develop relationships with contractors that will work with the community on home ownership BNA and CLT to identify other partners and provide educational programs for home ownership
3.1.2	Seek assistance for low-income families and seniors to afford home repairs and increase energy efficiency.	H	S/L	BNA to seek out home repair contractors that will work with the Neighborhood Association and the community BNA to identify other municipal partners All parties to identify funding sources
3.1.3	Encourage and properly utilize programs that help residents with increasing utility and property tax costs.	H	S/L	BNA to identify resources like Louisville Metro Office of Resilience and Community Services BNA to identify programs like Project Warm, LG&E's WeCare and WinterCare, and MSD's Emergency Wastewater Rate Assistance Program
3.1.4	Consider a local historic preservation district with design guidelines to preserve and enhance the character of Berrytown.	M	S	BNA to identify partners to assist such as Develop Louisville's Office of Housing and Community Development BNA to identify solutions like Jefferson County PVA office Homestead Exemption
3.1.5	Seek nomination and obtain National Register of Historic Places designation for Berrytown.	H	S	BNA to with Louisville Metro Planning and Design Services and Kentucky Heritage Council BNA to identify funding sources

### Objective 4: Promote Berrytown as a safe, welcoming, and inclusive community.

#### Recommendation 4.1: Communicate the geographic location and identity of the Berrytown neighborhood

4.1.1	Encourage new development in the neighborhood to identify their location as Berrytown.	H	S/L	BNA to meet with developers in the area to discuss and inform about the Berrytown neighborhood plan, and the neighborhood's rich history and legacy
-------	--	---	-----	---



## MOBILITY & CONNECTIVITY RECOMMENDATIONS

Strategy	Recommendation	Priority	Timeframe	Next Steps and Responsible Parties
----------	----------------	----------	-----------	------------------------------------

### Objective 5: Promote multi-modal connections inside the neighborhood and to the surrounding areas.

#### Recommendation 5.1: Improve the vehicular transportation network to adjacent neighborhoods.

5.1.1	Identify improvements on Heafer Road to calm traffic and create safe crossings to Berrytown Park.	M	M	Metro Public Works to study need for traffic calming Metro Public Works to conduct preliminary engineering study for improvements Metro Public Works to prioritize pedestrian safety improvements on Heafer Road
5.1.2	Consider re-opening Ridge (Avoca) Road to create more connectivity.	L	L	Berrytown Neighborhood Association (BNA) to research the closing of Avoca Road at the railroad tracks Metro Public Works to study options for safely opening the connection between Avoca Road and Ridge Road Metro Public Works to identify funding for safer railroad crossings
5.1.3	Begin neighborhood-wide education and enforcement of business car sales/repair impeding through traffic on public streets.	L	S & O	Align Louisville Metro Government partnering agencies with BNA: Councilperson's office, Code Enforcement, and Louisville Metro Police Department to determine the enforcement response for on-street car parking, repair, and sales All parties to implement a neighborhood-wide response
5.1.4	Encourage new developments undergoing rezoning in and adjacent to the Berrytown neighborhood to conduct a traffic study as part of the development review process.	H	O	Planning & Design Services to review traffic study and make available on Accela prior to public hearings
5.1.5	Create right-of-way through Louisville Metro Government property at Heafer and La Grange Road. Dedicate excess land to the Berrytown CLT.	H	O	Metro Public Works to have properties surveyed Metro Public Works to dedicate right-of-way Louisville Metro Government and CLT to consider the best option for any excess land
5.1.6	Study and consider options for traffic calming on through roads such as Heafer Road, North English Station Road, and Berrytown Road.	H	M	Metro Public Works to study need for traffic calming Metro Public Works to conduct preliminary engineering study for improvements Metro Public Works to construct pedestrian safety improvements on Berrytown Road, Heafer Road, and North English Station Road

#### Recommendation 5.2: Improve the safety and continuity of the pedestrian network.

5.2.1	Create a walking path loop in Berrytown Park.	H	S	BNA and Louisville Parks and Recreation to identify funding sources and secure funding Louisville Parks and Recreation to construct proposed design
5.2.2	Create sidewalk routes that connect the Berrytown neighborhood.	H	M	Align Louisville Metro Government partnering agencies: Metro Public Works and Councilperson's office through their funding sources Louisville Metro Government agencies to secure funding for designing and constructing proposed enhancements Louisville Metro Government agencies to design and construct sidewalks and other improvements
5.2.3	Add sidewalks along the Fire Training Facility property on Heafer Road to connect to N English Station Road.	L	M	Align Louisville Metro Government partnering agencies: Metro Public Works, Fire Department, and Councilperson's office through their funding sources for designing and constructing proposed enhancements Louisville Metro Government agencies to design and construct concept(s)
5.2.4	Add sidewalks along N English Station Road in support of a loop for the neighborhood and for school bus stops.	M	M	Align Louisville Metro Government partnering agencies: Metro Public Works, JCPS, and Councilperson's office through their funding sources for designing and constructing proposed enhancements Louisville Metro Government agencies to design and construct concept(s)
5.2.5	Create a continuous sidewalk connection to Eastpoint Business Center, Anchorage and Middletown to the south, to access amenities and employment opportunities.	H	L	Align Louisville Metro Government partnering agencies: Metro Public Works and Councilperson's office through their funding sources for designing and constructing proposed enhancements Louisville Metro Government agencies to design and implement concept(s)
5.2.6	Conduct an overall lighting study based on pedestrian need, crash data, and recommended light levels - in particular, analyze the need for street lighting in the double curve of North English Station Road; bend in Heafer; Berrytown; and Hiawatha.	H	M	Metro Public Works and LG&E to analyze need and power feeds for electric service JCPS Transportation to review all bus stops for proper lighting Metro Public Works to identify funding sources Louisville Metro Government agencies to design and construct lighting improvements.

#### Recommendation 5.3: Improve transit connections.

5.3.1	Encourage TARC to investigate the timing and availability of pick up/drop offs during typical education and employment hours.	H	M	BNA to identify concerns with TARC TARC to perform a review of services TARC to implement changes that address concerns, review and check-in with BNA that the changes work
5.3.2	Study bus shelter location associated with Berrytown Park, including a safe street crossing.	H	L	BNA and TARC to identify location TARC to develop design and review with neighborhood TARC to identify funding sources TARC to install shelter
5.3.3	Create a working partnership between TARC and the Neighborhood Association to promote ridership.	L	S & L	BNA to identify concerns with TARC BNA to work with TARC to create a specific, updated list of locations and times to catch a bus in Berrytown BNA to circulate the list throughout the neighborhood

## Priority

L = Low Priority  
M = Medium Priority  
H = High Priority

## Time Frame

S = Short Term (1-3 years)  
M = Mid Term (4-6 years)  
L = Long Term (7+ years)  
O = Ongoing

## BERRYTOWN PARK RECOMMENDATIONS

**Strategy Recommendation Priority Timeframe Next Steps and Responsible Parties**

### Objective 6: Position Berrytown Park as a central asset in a thriving and sustainable community.

#### Recommendation 6.1: Implement capital improvements, such as new features and updates, to Berrytown Park.

6.1.1	Conduct a Master Plan of Berrytown Park.	H	S	Louisville Parks and Recreation to work with Berrytown Neighborhood Association (BNA) to create a Master Plan of the Park through consensus building Louisville Parks and Recreation and Councilperson's office to seek potential funding Louisville Parks and Recreation to conduct preliminary design
6.1.2	Add a Sprayground play area to Berrytown Park.	M	L	Louisville Parks and Recreation to work with Berrytown Neighborhood Association (BNA) to create a plan to add a Sprayground typical of other parks Louisville Parks and Recreation and Councilperson's office to seek potential funding Louisville Parks and Recreation to conduct preliminary design Louisville Parks and Recreation to implement a Sprayground
6.1.3	Create a walking path loop in Berrytown Park.	H	S	Louisville Parks and Recreation to work with Berrytown Neighborhood Association (BNA) to create detailed plan for a loop path for exercise in Berrytown Louisville Parks and Recreation and Councilperson's office to seek potential funding Louisville Parks and Recreation to conduct preliminary design Louisville Parks and Recreation to implement a loop path
6.1.4	Add a commemorative ballfield sign honoring local Berrytown hero, Louis "Spike" Bald.	M	M	BNA to work with Louisville Parks and Recreation and Metro Public Works Sign Department to create a sign Louisville Parks and Recreation to add the sign to ballfield
6.1.5	Add movable bleachers to the ball field that could also be utilized in other areas of the park, such as the basketball court.	L	M	Louisville Parks and Recreation to secure bleachers for Berrytown Park for ongoing ball events
6.1.6	Add a State Historical Marker to recognize the history and legacy of the Berrytown neighborhood.	L	M	BNA to create detailed historic sign plan including the text BNA to seek out funding BNA to send historic sign information to Kentucky Historical Society in Frankfort for review BNA to implement Historic Sign with the Kentucky Historical Society

#### Recommendation 6.2: Perform necessary maintenance in neglected areas of Berrytown Park.

6.2.1	Determine if repair, replacement, or capital improvements are needed throughout Berrytown Park via a Master Plan.	H	S	Louisville Parks and Recreation to do or hire a consultant to review the infrastructure and needs of the community and to create an overall priority plan for improvements to the park
6.2.2	Repair and update the "tree stump" bollards along the Berrytown Park perimeter.	L	S	BNA to work with Louisville Parks and Recreation to implement a new perimeter system
6.2.3	Replace picnic tables with long-lasting composite materials.	M	S	BNA to work with Louisville Parks and Recreation to supply a series of picnic tables for ongoing events
6.2.4	Implement drainage improvements to prevent standing water and erosion, and to maintain quality access to sidewalks.	H	M	BNA to work with Louisville Parks and Recreation and MSD to slope flat ground, vegetate erosion problems, and reinforce banks at sidewalk creek crossing
6.2.5	Improve basketball court surface.	H	L	BNA to work with Louisville Parks and Recreation to review the broken, unlevelled basketball surface
6.2.6	Investigate the state of the Berrytown Park Concessions Stand. Assess whether repairs/upgrades or replacement are a better option.	H	L	Louisville Parks and Recreation to investigate the condition of the Concessions Stand and consider options for the facility BNA to be consulted by Louisville Parks and Recreation after investigation
6.2.7	Review Park lighting for consistency and for ball activities. Check electrical hookups are in working order. See that some power is available at all times.	H	S	BNA to work with Louisville Parks and Recreation to review electrical connections and general power availability

## Priority

L = Low Priority  
M = Medium Priority  
H = High Priority

## Time Frame

S = Short Term (1-3 years)  
M = Mid Term (4-6 years)  
L = Long Term (7+ years)  
O = Ongoing

## QUALITY OF LIFE RECOMMENDATIONS

Strategy	Recommendation	Priority	Timeframe	Next Steps and Responsible Parties
Objective 7: Support an engaged community with a small town feel in a forested neighborhood.				
Recommendation 7.1: Maintain and enhance the historic tree canopy in Berrytown.				
7.1.1	Encourage new development to contribute to the neighborhood-wide goal of 45% tree canopy coverage, matching the tree canopy goal for Louisville Metro set forth in the <i>Urban Tree Canopy Assessment</i> (2015).	H	S	Since most of the vacant lots are forested, encourage new development to contribute to the neighborhood-wide goal of 45% tree canopy through tree preservation, fees-in-lieu, and alternate site planting. The 45% coverage goal is meant to increase tree canopy on a neighborhood scale and does not necessarily apply to individual sites and does not supersede the requirements in the Land Development Code.
7.1.2	Conduct a tree health audit for the Berrytown neighborhood.	H	L	In order to maintain a mature forested area, BNA to request that tree health will need to be studied by the Metro Division of Community Forestry
7.1.3	Work with partners to create a tree preservation and rehabilitation program.	M	M	BNA to promote tree knowledge to rehabilitate the forest in Berrytown through agencies like Brightside and organizations like Trees Louisville and Louisville Grows
7.1.4	Coordinate a twice a year tree and trash clean up day in the Berrytown neighborhood.	M	L	BNA to work with the Metro Council, Brightside, and organizations like Trees Louisville and Louisville Grows to create a yearly clean up day in order to keep the tree debris in check
Objective 8: Strengthen the historic legacy of Berrytown.				
Recommendation 8.1: Preserve and promote Berrytown's history to build pride in Berrytown's independent past.				
8.1.1	Install placemaking and identity banners throughout the neighborhood, especially at gateways.	H	S	BNA, Councilperson's office, and Metro Public Works to indicate where banners and gateways should be located through the neighborhood
8.1.2	Improve access to social services (food pantry, TARC access, and senior activities)	H	L	BNA to locate a food pantry in the neighborhood BNA to further work with TARC on access BNA to further work with non-profits and government services to create a robust senior services
8.1.3	Add a Little Food Pantry in Berrytown.	M	M	BNA to locate a Little Food Pantry on private property adjacent to the right-of-way
8.1.4	Add a Little Library in Berrytown.	H	S	BNA to locate a Little (Book) Library on private property adjacent to the right-of-way
8.1.5	Identify and improve cemeteries by locating them, keeping trees in good health, grounds maintenance, and signage	H	L	BNA to work with land owners to restore cemeteries and maintain the grounds, even inside of TCPA where cleaning can occur as long as trees are not removed
8.1.6	Create ongoing local festival events in Berrytown Park	H	O	BNA, Councilperson's office, and Louisville Parks and Recreation to work together on providing a well-planned festival structure to continue the legacy of local festivals