

# 4660 POPLAR LEVEL ROAD

Louisville Metro Planning Commission

March 30<sup>th</sup>, 2023

Owner:

GAULT DEVELOPMENT LLC

Engineer:

Ann Richard, RLA

Land Design & Development Inc.

Prepared By: Kyle Galloway, Esq.



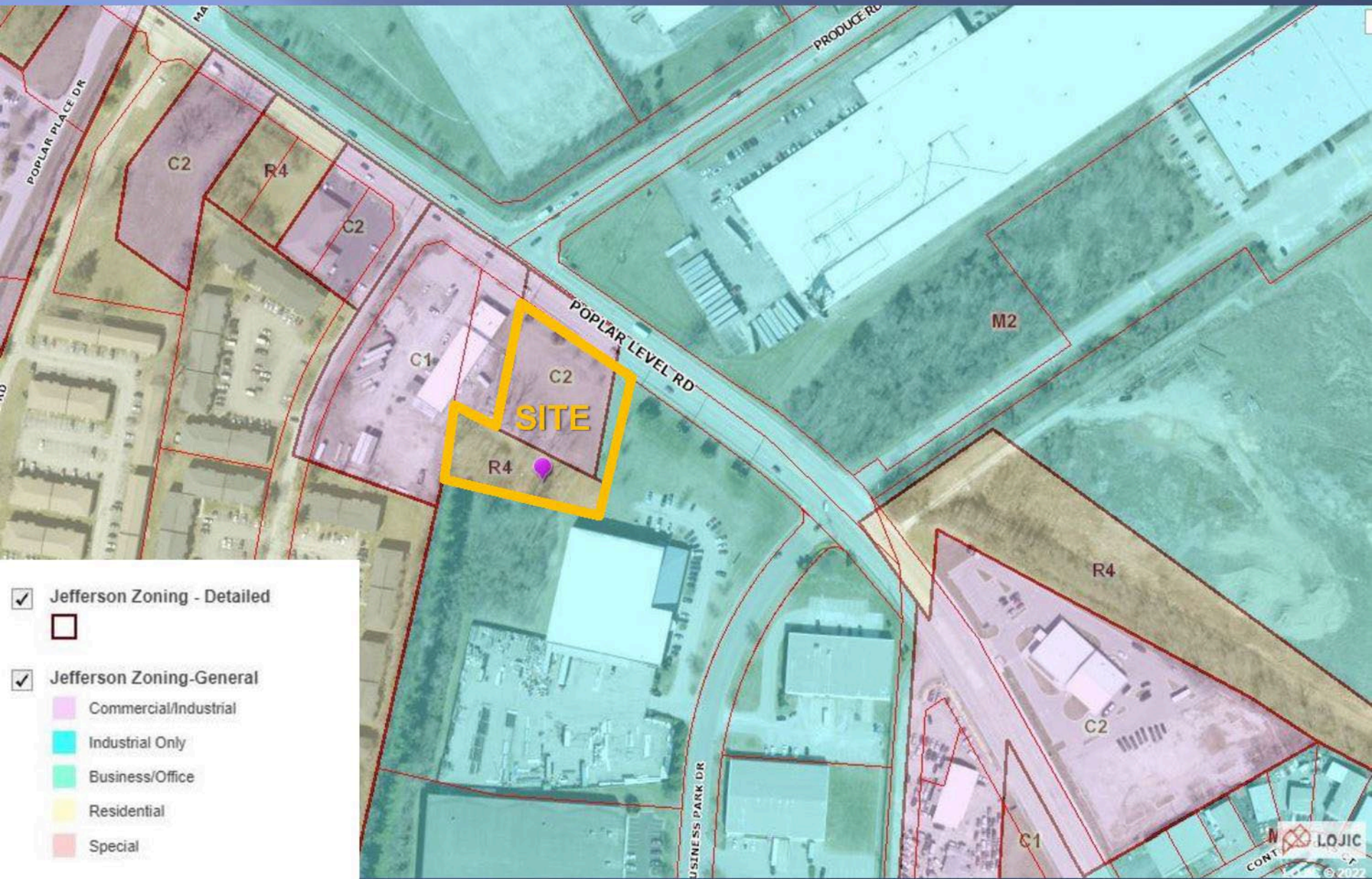
# 4660 POPLAR LEVEL ROAD

## Project Information

- Currently Zoned: R~4, C~2 , and M~2
- Current Form District: Neighborhood
- Proposed Change: M~2 Industrial Zone and Suburban Workplace Form District

# EXISTING ZONING

## EXISTING FORM DISTRICT: NEIGHBORHOOD



☒ Jefferson Zoning - Detailed



☒ Jefferson Zoning-General

Commercial/Industrial

Industrial Only

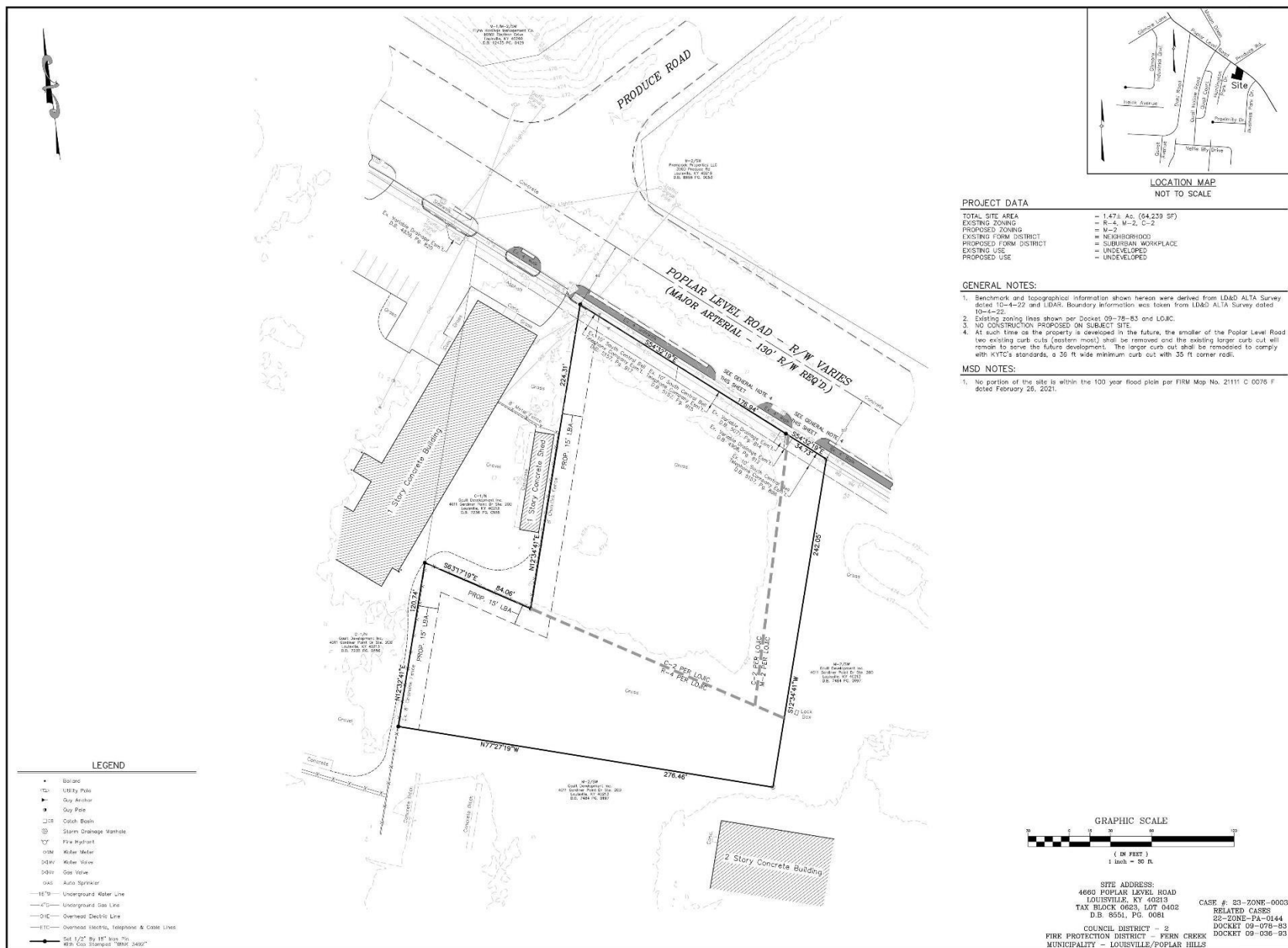
Business/Office

Residential

Special



# PLAN

[illegible]

		Page 6
		Page 7

PROJECT DATA	
FILE NAME: 2112-RECOP	SCALE: AS SHOWN
DATE: 10/17/92	DRAWN BY: AJ
CHECKED BY: AJR	

**LD&D**  
LAND DESIGN & DEVELOPMENT, INC.  
DESIGNING • LAND ORIENTED • LANDSCAPE ARCHITECTURE  
405 WATERSIDE DRIVE SUITE 1000 AUSTIN TEXAS 78746  
PH: 512.476.1100 FAX: 512.476.1101  
WEB SITE: WWW.LD-D.COM

GENERAL DISTRICT DEVELOPMENT PLAN

**4660 POPLAR LEVEL ROAD  
WATTERSON BUSINESS PARK**

OWNER/DEVELOPER  
**GAULT DEVELOPMENT LLC**  
4011 GARDNER POINT DR STE 200  
LOUISVILLE, KY 40213

JOB NO. 22123

SHEET 1 OF 1

# AERIAL





# AERIAL





# AERIAL

