

Louisville/Jefferson County Environmental Trust

Established by Ordinance Originally
Adopted 12-20-1994



Governed by an Oversight Board

- 5 Citizen Members plus the
- Executive Director MSD
 - Director Louisville Parks & Recreation
 - Director of Metro Planning & Design Services
 - Director of Public Works & Assets





Louisville/Jefferson County Environmental Trust Support Staff

Jefferson County Attorney's Office

Metro Agency Staff

Private & Professional Advisors

Part Time Project Manager





The 9 member working board has citizen expertise in different facets of land management ranging from natural areas, working farmlands, wetlands, woodlands, wildlife habitats, watershed management, and urban open spaces. The key to LJCET's success as a respected land trust has been the citizen involvement of board governance and the development of donor trust.



***The Louisville/Jefferson County Environmental Trust was the second land trust in Kentucky to attain accreditation through The Land Trust Accreditation Commission and one of the few quasi-governmental land trust in the U.S. to hold this designation.*

CONSERVATION EASEMENTS



Voluntary legal agreement between a land owner and a land trust or government agency that permanently limits the use of the land to protect its **conservation values for the benefit of the public and the landowner.**



Conservation Easements as of March 2025

22 Easements	1702 acres	Major Conservation Values
4- Wetlands	151.1 acres	Flood Control, Water Quality, Wildlife Habitat
9 - Wildlife/Scenic	383.7 acres	Scenic Vistas, Wildlife Habitat, Watershed Mgt.
7 - Working Lands Farms	954 acres	Prime Farmland, Watershed Mgt, Water Quality
2- Equine Farms	213.2 acres	Prime Farmland, Scenic Vista, Watershed Mgt



Our Responsibility:

- Monitor the CE Annually
- Protect the Conservation Values
 - Defend the CE

IN PERPETUITY

Conservation Values Protected by Conservation Easements Include:

Prime & Statewide Important Farmland

Grazing Lands

Upland Wildlife Habitats

Critical Wetlands

Water Quality Attributes

Watershed Health Qualities

Stormwater Infiltration

Woodlands & Tree Canopies

Scenic Open Spaces

Air Quality Attributes

Natural Flood Storage Attributes

Façade & Historic Preservation Easements Held:

- Clover Hill/Youngland Lot Historic Preservation Easement
- George Herr House
- James Clore House
- Levine Bates House Façade
- Louisville Glassworks Façade
- Old Citizens National Life
- Old Louisville Trust Building



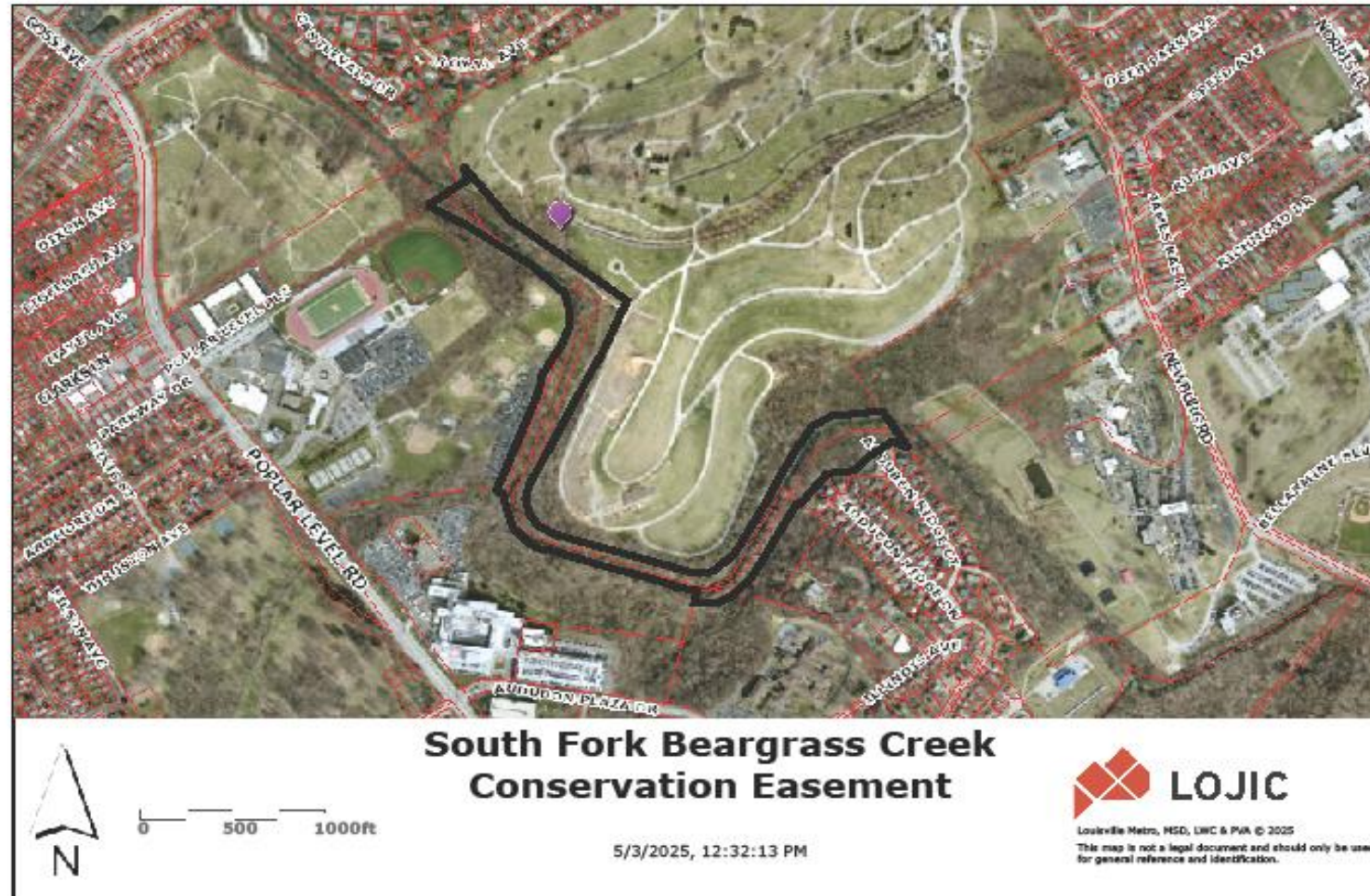
Today's Presentation and Conservation Easement Asks:

To assume existing Conservation Easements in two watersheds: Beargrass Creek and Goose Creek

5 Conservation Easements totaling 20.4 acres



Beargrass Creek Conservation Easements





MSD Conservation Easement Assignment South Fork of Beargrass Creek

In the mid 1980's to early 1990's a Mayoral Task Force (The Beargrass Creek Task Force) was established to evaluate and determine ways to improve the integrity of the waters of Beargrass Creek, particularly the South Fork of Beargrass Creek which ran through many of the community's public spaces, including the Louisville Zoo, Secena Park, Cherokee Park and the Louisville Nature Center. One of the strategies included asking for voluntary conservation easements on buffer areas along the creek. These buffers, offered in perpetuity, would help protect the tree canopy along the stream and help filter pollutants from adjacent "manicured properties" that utilized fertilizers and pesticides to promote eye-appealing green lawns. There were several major players within the Task Force, including MSD (technical and financial assistance), JCPS and the Archdioceses of Louisville (education and outreach assistance) as well as the many agencies under the City's umbrella. Conservation easements as a major land management strategy was a great idea, however there was not an entity in existence that either had the capacity or willingness to hold such a unique legal tool... except MSD. The easement properties being assigned, approximately 11.5 acres, are owned by The Roman Catholic of Archdiocese of Louisville (Calvary Cemetery) (St. X High School), Home for the Aged of Little Sisters of the Poor, Daysprings Foundation, Inc. and Audubon Ridge HOA. The easement assignments transfers the annual monitoring and defense requirements to LJCET.

Stoll Hill HOA Conservation Easements

5/3/25, 12:47 PM

Print Layout



0 200 400ft

Stoll Hill HOA Association

5/3/2025, 10:23:24 AM



Louisville Metro, MSD, LWC & PVA © 2025
This map is not a legal document and should only be used
for general reference and identification.



MSD Conservation Easement Assignment Stoll Hill HOA – Goose Creek

The Stoll Hill Homeowners Association Conservation Easement on 8.9 acres was granted to MSD on October 27, 2000, about one year before the LJCET was prepared to accept their first Conservation Easement. The Stoll Hill easement was part of a condition of development for the Stoll Hill site to prevent future building and development on a steep slope area and floodplain. The assignment of the conservation easement transfers the responsibility of annually monitoring the wooded site and defending the Easement to the LJCET.

A decorative pattern of stylized leaves in various shades of light gray, scattered across the left side of the slide. The leaves have white outlines and some internal white lines, giving them a geometric, almost architectural feel.

Thank you

Kurt Mason, Chair
LJCET Oversight Board