



1 Elevation - Type A - Front - Presentation
A204 1/8" = 1'-0"

Type A - Front		
Fiber Cement	3,241 SQFT	57%
Masonry	850 SQFT	15%
Glazing	1,608 SQFT	28%
Total	5,699 SQFT	



2 Elevation - Type A - Rear - Presentation
A204 1/8" = 1'-0"

Type A - Back		
Fiber Cement	3,241 SQFT	57%
Masonry	850 SQFT	15%
Glazing	1,608 SQFT	28%
Total	5,699 SQFT	



3 Elevation - Type A - Left - Presentation
A204 1/8" = 1'-0"


Type A - Left		
Fiber Cement	1,959 SQFT	84%
Masonry	171 SQFT	7%
Glazing	216 SQFT	9%
Total	2,346 SQFT	



4 Elevation - Type A - Right - Presentation
A204 1/8" = 1'-0"

Type A - Right		
Fiber Cement	1,959 SQFT	84%
Masonry	171 SQFT	7%
Glazing	216 SQFT	9%
Total	2,346 SQFT	


Architect of Record



STUDIO A

2330 frankfort avenue
louisville, kentucky 40206
tel.: 502.589.5007
www.studioaarch.com

Design Architect



1409 South 4th Street Suite 310
Louisville, KY 40208
T: 502.536.2054

Consultants

Client

CANE RUN,
LP

545 S 3rd St. Louisville, KY 40202

Project Name

CANE RUN RD
APARTMENTS

3500 Lees Lane Louisville, KY
40216

Seal

05/16/2023

REVIEW SET

Revisions

No.	Description	Date

BUILDING TYPE
A - EXTERIOR
ELEVATIONS -
PRESENTATION

Project number 21-LD-17
Date 05/16/2023

A204

Scale 1/8" = 1'-0"



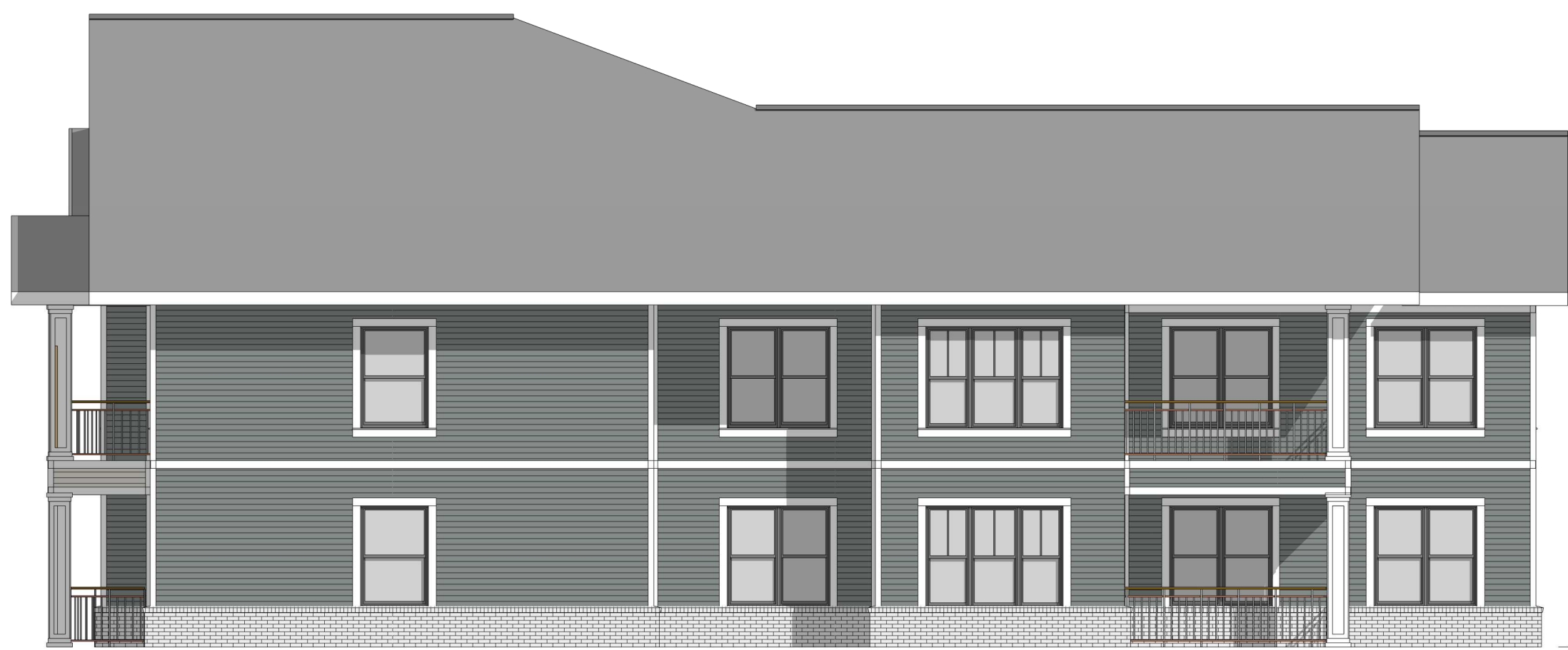
1 Elevation - Type B - Front - Presentation
A205 1/8" = 1'-0"

Type B - Front			
Fiber Cement	3,169 SQFT	59%	
Masonry	827 SQFT	15%	
Glazing	1,392 SQFT	26%	
Total	5,388 SQFT		



2 Elevation - Type B - Rear - Presentation
A205 1/8" = 1'-0"

Type B - Back			
Fiber Cement	3,169 SQFT	59%	
Masonry	827 SQFT	15%	
Glazing	1,392 SQFT	26%	
Total	5,388 SQFT		



3 Elevation - Type B - Left - Presentation
A205 1/8" = 1'-0"


Type B - Left			
Fiber Cement	1,451 SQFT	81%	
Masonry	131 SQFT	7%	
Glazing	216 SQFT	12%	
Total	1,798 SQFT		



4 Elevation - Type B - Right - Presentation
A205 1/8" = 1'-0"

Type B - Right			
Fiber Cement	1,451 SQFT	81%	
Masonry	131 SQFT	7%	
Glazing	216 SQFT	12%	
Total	1,798 SQFT		


Architect of Record



STUDIO A

2330 frankfort avenue
louisville, kentucky 40206
tel : 502.588.9007
www.studioaarch.com

Design Architect



1409 South 4th Street Suite 310
Louisville, KY 40208
T: 502.536.3054

Consultants

Client

CANE RUN,
LP

545 S 3rd St. Louisville, KY 40202

Project Name

CANE RUN RD
APARTMENTS

3500 Lees Lane Louisville, KY
40216

Seal

05/16/2023

REVIEW SET

Revisions

No.	Description	Date

BUILDING TYPE
B - EXTERIOR
ELEVATIONS -
PRESENTATION

Project number 21-LD-17
Date 05/16/2023

A205

Scale 1/8" = 1'-0"