

RECEIVED
FEB 10 2025
PLANNING & DESIGN
SERVICES

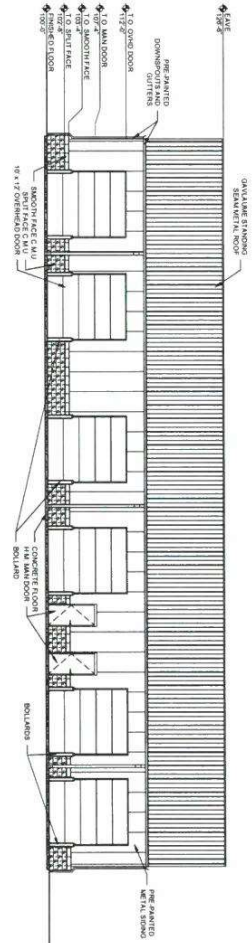
Keyes Architects and Associates expressly reserve its common law copyright in the design and construction documents. These documents are considered proprietary information and shall not be duplicated, changed or used in any form without the express written permission of Keyes Architects and Associates. If the design documents are to be used in any other manner, the user must obtain the express written permission and consent of Keyes Architects and Associates, 4117 Preston Highway, Louisville, Kentucky 40213.

A2.11

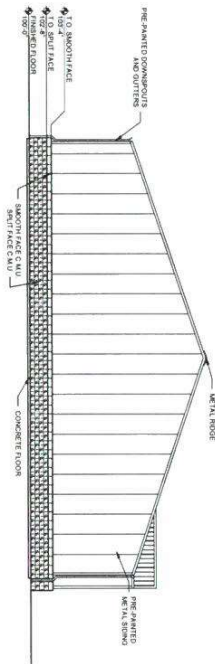
NEW CONSTRUCTION FOR:
**AUTO BODY REPAIR
SHOP**
6700 STRAWBERRY LANE
LOUISVILLE, KY 40214

KEYES ARCHITECTS & ASSOCIATES
4717 PRESTON HIGHWAY
LOUISVILLE, KENTUCKY 40213 (502) 636-5113

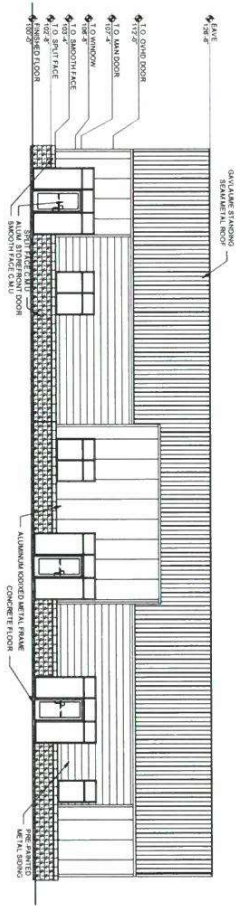
24-ZONE-0126



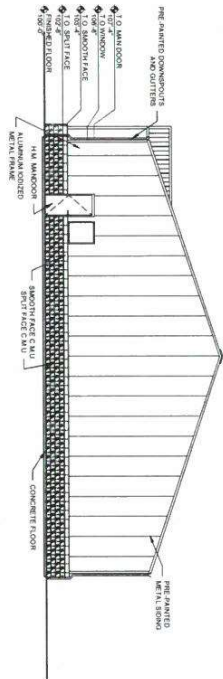
01 PARKING LOT VIEW
SCALE: 1/8" = 1'-0"



02 STRAWBERRY LANE VIEW
SCALE: 1/8" = 1'-0"



03 ESTELLE AVE VIEW
SCALE: 1/8" = 1'-0"



04 NEAR SAVE A LOT
SCALE: 1/8" = 1'-0"

RECEIVED

FEB 10 2025

PLANNING & DESIGN
SERVICES

THIS DOCUMENT AND ANY INFORMATION CONTAINED HEREIN IS THE PROPERTY OF KEYES ARCHITECTS & ASSOCIATES, INC. (KEYES). IT IS TO BE USED ONLY FOR THE PROJECT AND SITE SPECIFICALLY IDENTIFIED HEREIN. NO PART OF THIS DOCUMENT IS TO BE REPRODUCED, COPIED, OR TRANSMITTED IN ANY FORM OR BY ANY MEANS, WITHOUT THE WRITTEN PERMISSION OF KEYES. KEYES ARCHITECTS & ASSOCIATES, INC. 4747 PRES ON HURWAY LOUISVILLE, KY 40213 (502) 636-5113

A2.10

NEW CONSTRUCTION FOR:
AUTO BODY REPAIR SHOP
6700 STRAWBERRY LANE
LOUISVILLE, KY 40214

KEYES ARCHITECTS & ASSOCIATES
4747 PRES ON HURWAY
LOUISVILLE, KENTUCKY 40213 (502) 636-5113

04-27MAE-ADK