

Land Development & Transportation

March 27, 2025

Zoning Request: R-5, Single Family Residential
to C-1, Commercial



The LOGHS Clinic
Professional Excellence

Attorney: Jon Baker, Wyatt, Tarrant & Combs, LLP

Plan Prepared By: Joey Mackin, Bowman

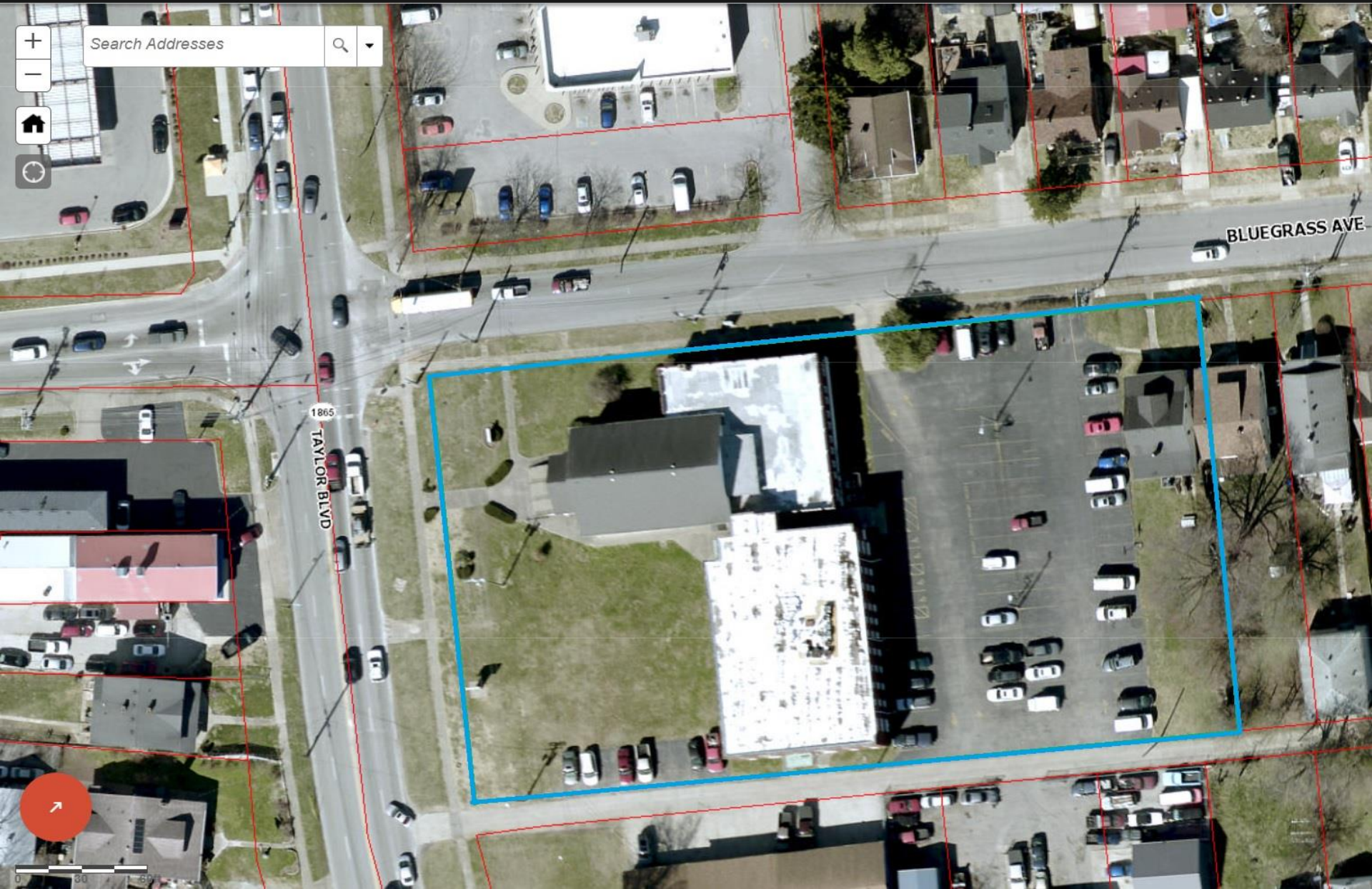
WYATT

Bowman

THE PROPERTY

LOJIC Online

A GIS Partnership to Meet the
Growing Needs of Louisville, KY



ZONING OF SURROUNDING AREA

LOJIC Online

AGIS Partnership to Meet the
Growing Needs of Louisville, KY



Gray Basic Aerial Base Labels



Layers



Tools



Reports

Theme Controls

☒ Jefferson Form District Boundaries



☐ Jefferson Fire Districts



☐ Jefferson Proposed Subdivisions



☐ Jefferson Subdivisions



☐ Jefferson Overlay Districts



☐ Jefferson Plan Certain Districts



☒ Jefferson Zoning - Detailed



☒ Jefferson Zoning-General



☐ Open Spaces

☐ Political Districts

☐ Elevation

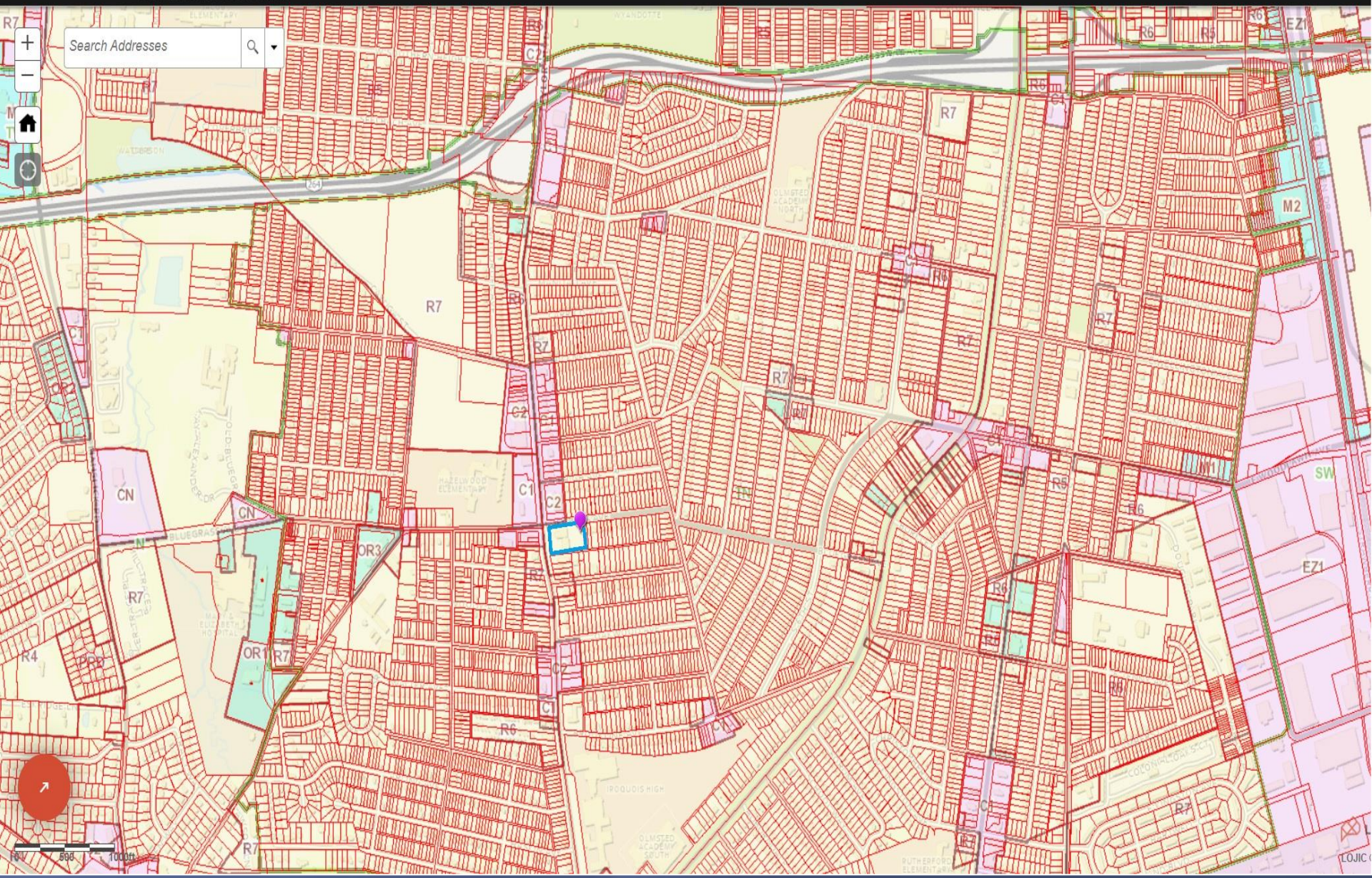


LOJIC

ZONING OF GREATER AREA

LOJIC Online

A GIS Partnership to Meet the Growing Needs of Louisville, KY



ROADWAY CLASSIFICATION

LOJIC Online

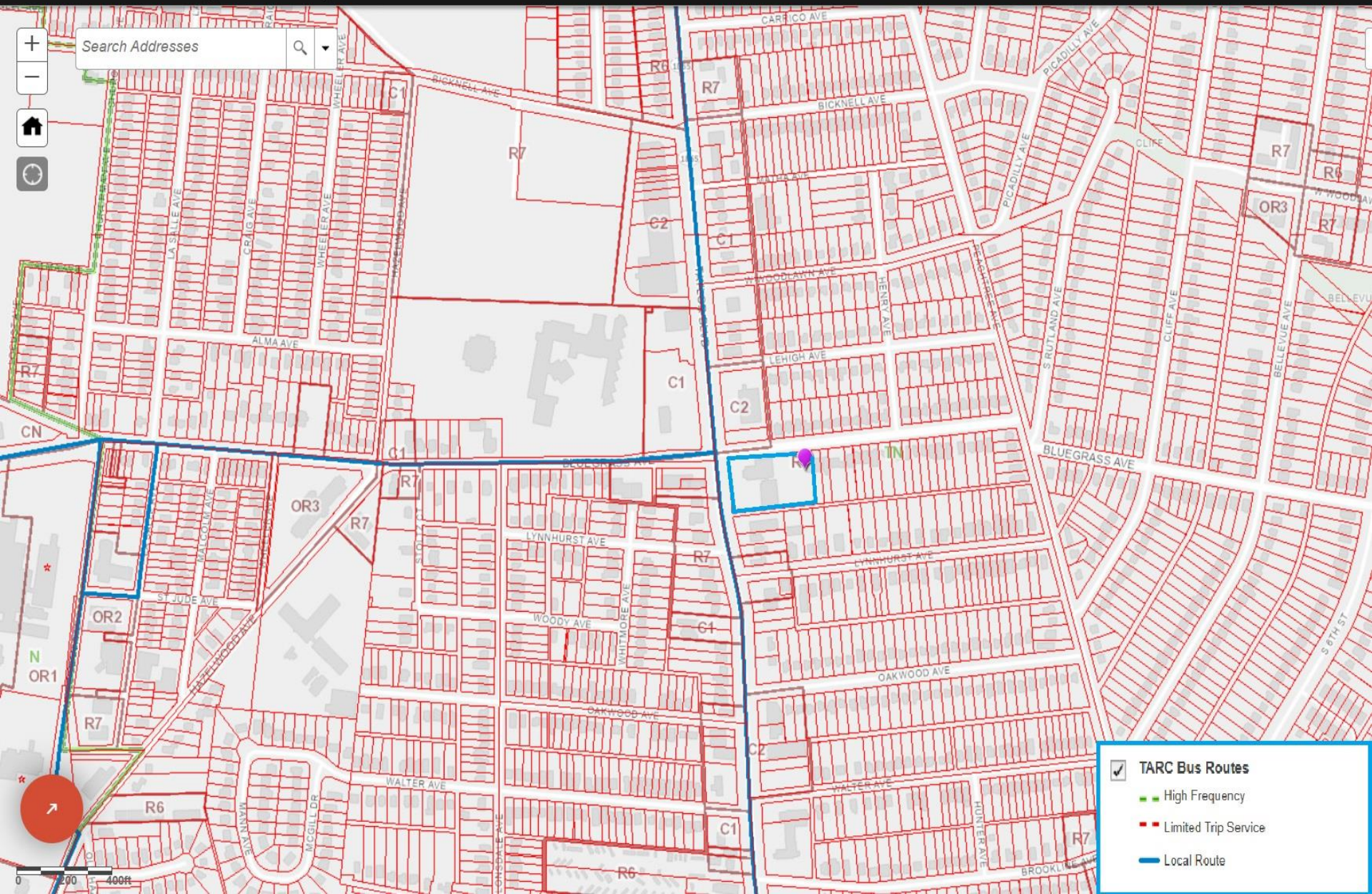
A GIS Partnership to Meet the Growing Needs of Louisville, KY



TARC ROUTES

LOJIC Online

A GIS Partnership to Meet the
Growing Needs of Louisville, KY



Viewing Property from Taylor and Rear Alley

← Louisville, Kentucky

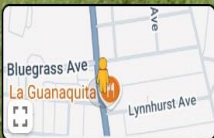


Google Street View

Jul 2019 See more dates



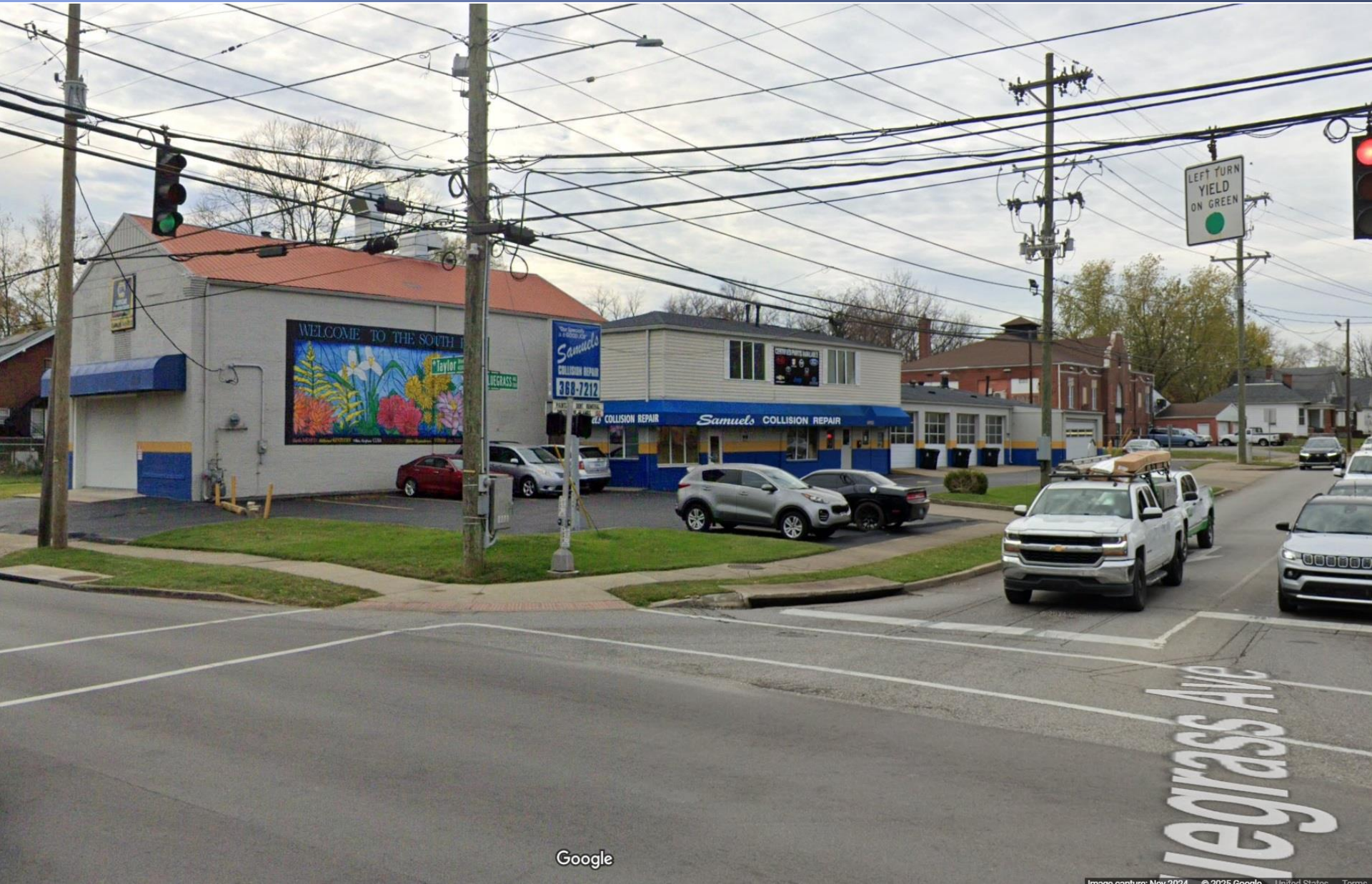
Google



Viewing Property from Taylor and Bluegrass



Commercial Property Across Taylor BLVD



Commercial Property Catty-Corner



Commercial Property Across Bluegrass Ave.



Viewing Property from Taylor and Bluegrass



Share

VIEW of Property Fronting Bluegrass Ave.



View Exiting Rear Parking Area onto Bluegrass

1037 Bluegrass Ave

Louisville, Kentucky

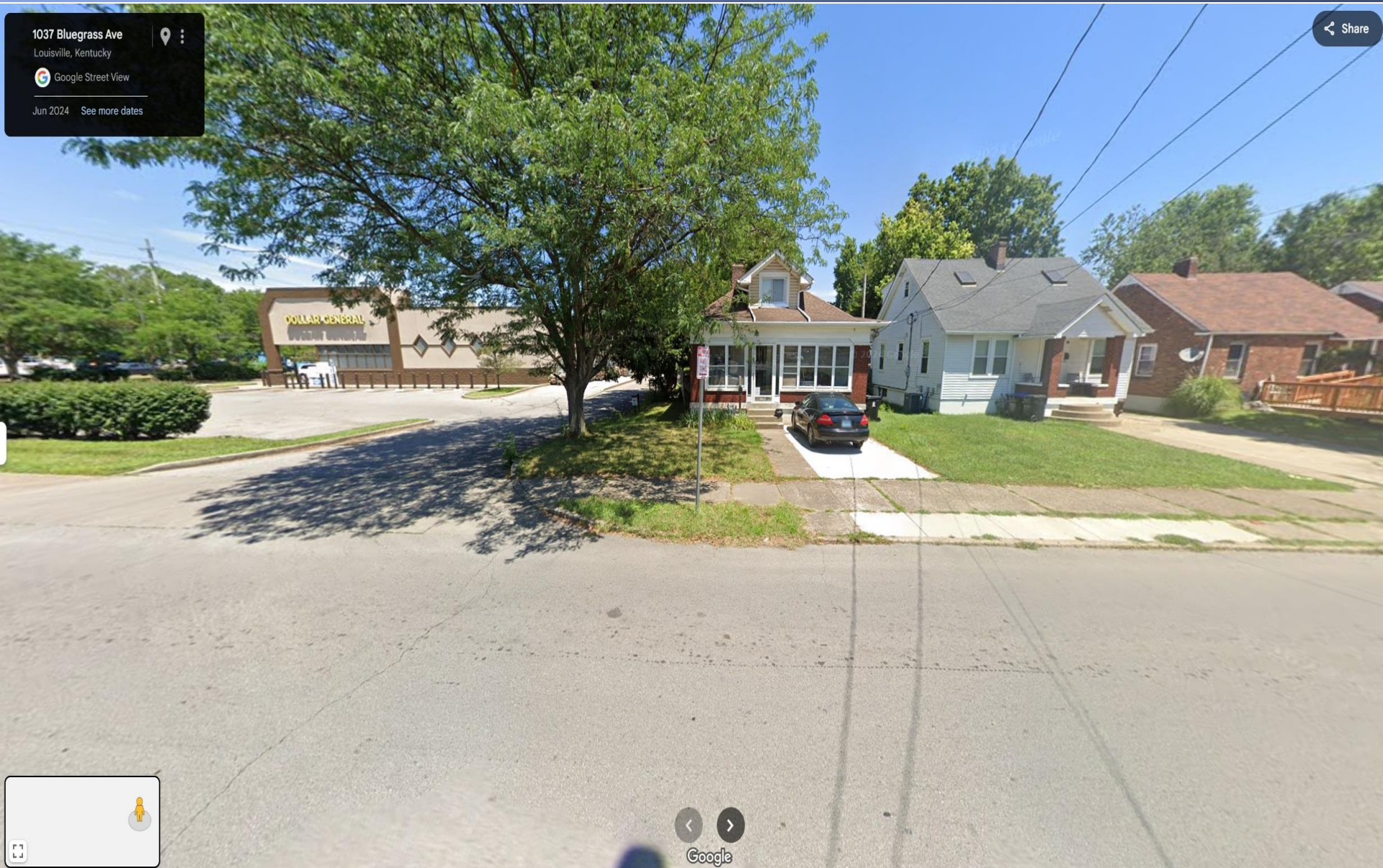


Google Street View

Jun 2024

[See more dates](#)

[Share](#)



Google

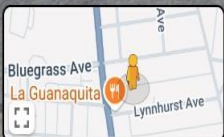
South to North View of Rear Parking Area.



← Louisville, Kentucky

Google Street View

Sep 2022 See more dates



Google

Rear Alleyway Looking West

Search Google Maps



← Louisville, Kentucky



Google Street View

Sep 2022 See more dates



Google

Rear Alleyway Looking East

← Louisville, Kentucky

Google Street View

Jul 2019 See more dates



Google

Residential Structure on Property



Residential Structure on Property

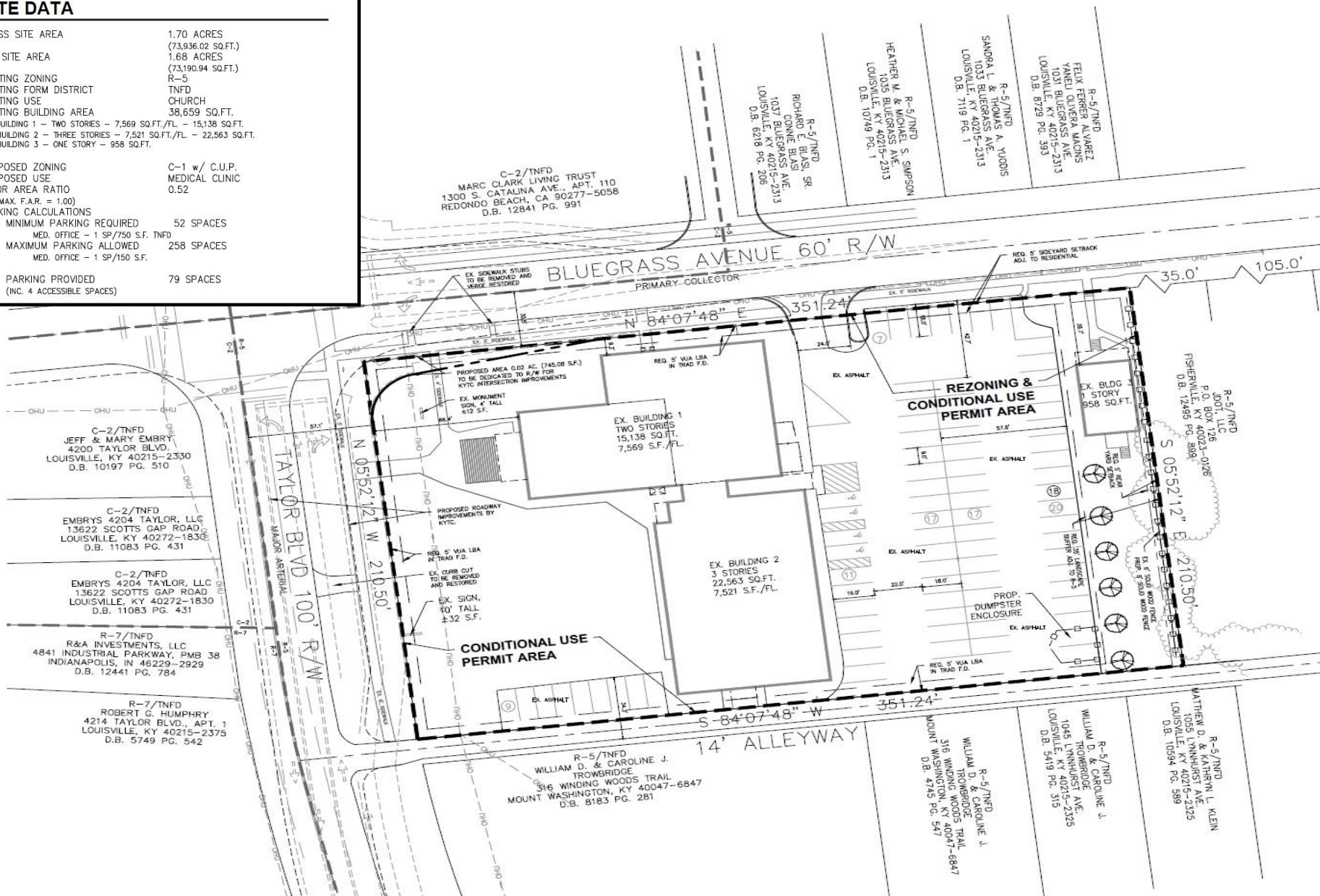


Residential Structure on Property



SITE DATA

PARKING PROVIDED 79 SPACES
(INC. 4 ACCESSIBLE SPACES)



Land Development & Transportation

March 27, 2025

Zoning Request: R~5, Single-Family Residential
to C~1, Commercial



The LOGHS Clinic
Professional Excellence

Attorney: Jon Baker, Wyatt, Tarrant & Combs, LLP

Plan Prepared By: Joey Mackin, Bowman

WYATT

Bowman