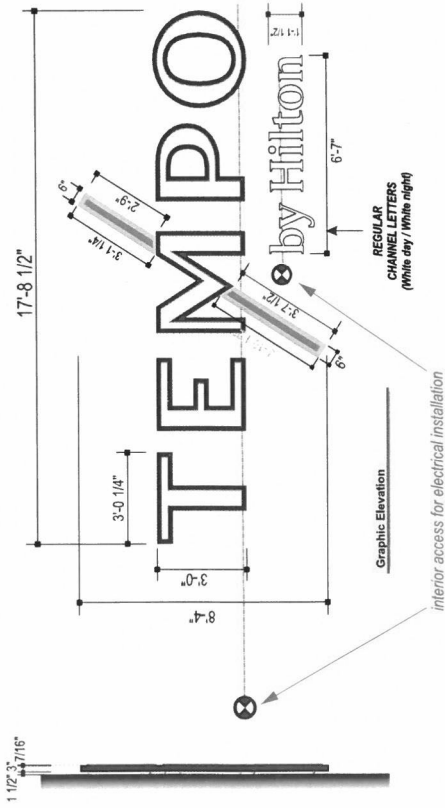


A1 1X

LETTRES CHANNEL ILLUMINÉES (niveau élevé) ELEVATION EST  
BÂTIMENT DE COULEUR FONCÉE



DESCRIPTION

- .125 ALUMINIUM ROUTED FACE
- .063 RETOUR SOUDÉ EN ALUMINIUM
- .177 DOS EN POLY CLAIR
- .063 CLIPS HALO EN ALUMINIUM
- .708 LETTRE CLAIR PUSH THRU avec VINYLE
- AVEC KEYLINE BLANCHE 1/16"
- GE 24V TETRA MAX 6500 LED BLANCHES
- ou équivalent Sloan LED
- ALIMENTATION GE 24V 100W
- QUINCAILLERIE DE MONTAGE 3/8"
- ETANCHES LONGUES 1-1/2"
- LE MÉTRONOME NEST PAS LE HALO ÉCLAIRE

DESCRIPTION

- .125 ALUMINIUM ROUTED FACE
- .063 RETOUR SOUDÉ EN ALUMINIUM
- .177 DOS EN POLY TRANSPARENT
- .063 ALUMINIUM HALO CLIPS
- .708 CLEAR PUSH THRU LETTER w/ VINYL
- AVEC 1/16" KEYLINE BLANC
- GE 24V TETRA MAX 6500 WHITE LEDS
- ou équivalent Sloan LED
- ALIMENTATION GE 24V 100W
- MATÉRIEL DE MONTAGE 3/8"
- SUPPORTS DE 1-1/2" DE LONG
- PINCE MURALE
- LE MÉTRONOME NEST PAS ÉCLAIRE PAR LE HALO
- TRIM CAP NOIRE POUR LE MÉTRONOME

Couleurs / Colours

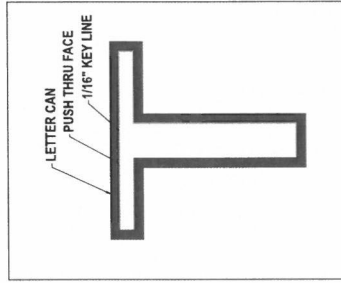
Colors may not be exactly as shown on screen. Please refer to appropriate chart for exact colours.  
Les couleurs illustrées à l'écran peuvent ne pas être exactes. Veuillez vous référer aux chartes appropriées pour les couleurs exactes.

C1	Silver Metallic	Akzo Nobel	SC900-4119-T
C2	Black Vinyl	Akzo Nobel	SC900-4119-T
C3	Painted Sain finish	Akzo Nobel	SC900-4119-T
C4	White	Akzo Nobel	SC900-4119-T
C5	Acrylic	Akzo Nobel	SC900-4119-T
C6	Painted Sain finish	Akzo Nobel	SC900-4119-T
C7	White	Akzo Nobel	SC900-4119-T
C8	Acrylic	Akzo Nobel	SC900-4119-T
C9	Painted Sain finish	Akzo Nobel	SC900-4119-T
C10	White	Akzo Nobel	SC900-4119-T
C11	Acrylic	Akzo Nobel	SC900-4119-T
C12	Painted Sain finish	Akzo Nobel	SC900-4119-T
C13	White	Akzo Nobel	SC900-4119-T
C14	Acrylic	Akzo Nobel	SC900-4119-T
C15	Painted Sain finish	Akzo Nobel	SC900-4119-T
C16	White	Akzo Nobel	SC900-4119-T
C17	Acrylic	Akzo Nobel	SC900-4119-T
C18	Painted Sain finish	Akzo Nobel	SC900-4119-T
C19	White	Akzo Nobel	SC900-4119-T
C20	Acrylic	Akzo Nobel	SC900-4119-T
C21	Painted Sain finish	Akzo Nobel	SC900-4119-T
C22	White	Akzo Nobel	SC900-4119-T
C23	Acrylic	Akzo Nobel	SC900-4119-T
C24	Painted Sain finish	Akzo Nobel	SC900-4119-T
C25	White	Akzo Nobel	SC900-4119-T
C26	Acrylic	Akzo Nobel	SC900-4119-T
C27	Painted Sain finish	Akzo Nobel	SC900-4119-T
C28	White	Akzo Nobel	SC900-4119-T
C29	Acrylic	Akzo Nobel	SC900-4119-T
C30	Painted Sain finish	Akzo Nobel	SC900-4119-T
C31	White	Akzo Nobel	SC900-4119-T
C32	Acrylic	Akzo Nobel	SC900-4119-T
C33	Painted Sain finish	Akzo Nobel	SC900-4119-T
C34	White	Akzo Nobel	SC900-4119-T
C35	Acrylic	Akzo Nobel	SC900-4119-T
C36	Painted Sain finish	Akzo Nobel	SC900-4119-T
C37	White	Akzo Nobel	SC900-4119-T
C38	Acrylic	Akzo Nobel	SC900-4119-T
C39	Painted Sain finish	Akzo Nobel	SC900-4119-T
C40	White	Akzo Nobel	SC900-4119-T
C41	Acrylic	Akzo Nobel	SC900-4119-T
C42	Painted Sain finish	Akzo Nobel	SC900-4119-T
C43	White	Akzo Nobel	SC900-4119-T
C44	Acrylic	Akzo Nobel	SC900-4119-T
C45	Painted Sain finish	Akzo Nobel	SC900-4119-T
C46	White	Akzo Nobel	SC900-4119-T
C47	Acrylic	Akzo Nobel	SC900-4119-T
C48	Painted Sain finish	Akzo Nobel	SC900-4119-T
C49	White	Akzo Nobel	SC900-4119-T
C50	Acrylic	Akzo Nobel	SC900-4119-T
C51	Painted Sain finish	Akzo Nobel	SC900-4119-T
C52	White	Akzo Nobel	SC900-4119-T
C53	Acrylic	Akzo Nobel	SC900-4119-T
C54	Painted Sain finish	Akzo Nobel	SC900-4119-T
C55	White	Akzo Nobel	SC900-4119-T
C56	Acrylic	Akzo Nobel	SC900-4119-T
C57	Painted Sain finish	Akzo Nobel	SC900-4119-T
C58	White	Akzo Nobel	SC900-4119-T
C59	Acrylic	Akzo Nobel	SC900-4119-T
C60	Painted Sain finish	Akzo Nobel	SC900-4119-T
C61	White	Akzo Nobel	SC900-4119-T
C62	Acrylic	Akzo Nobel	SC900-4119-T
C63	Painted Sain finish	Akzo Nobel	SC900-4119-T
C64	White	Akzo Nobel	SC900-4119-T
C65	Acrylic	Akzo Nobel	SC900-4119-T
C66	Painted Sain finish	Akzo Nobel	SC900-4119-T
C67	White	Akzo Nobel	SC900-4119-T
C68	Acrylic	Akzo Nobel	SC900-4119-T
C69	Painted Sain finish	Akzo Nobel	SC900-4119-T
C70	White	Akzo Nobel	SC900-4119-T
C71	Acrylic	Akzo Nobel	SC900-4119-T
C72	Painted Sain finish	Akzo Nobel	SC900-4119-T
C73	White	Akzo Nobel	SC900-4119-T
C74	Acrylic	Akzo Nobel	SC900-4119-T
C75	Painted Sain finish	Akzo Nobel	SC900-4119-T
C76	White	Akzo Nobel	SC900-4119-T
C77	Acrylic	Akzo Nobel	SC900-4119-T
C78	Painted Sain finish	Akzo Nobel	SC900-4119-T
C79	White	Akzo Nobel	SC900-4119-T
C80	Acrylic	Akzo Nobel	SC900-4119-T
C81	Painted Sain finish	Akzo Nobel	SC900-4119-T
C82	White	Akzo Nobel	SC900-4119-T
C83	Acrylic	Akzo Nobel	SC900-4119-T
C84	Painted Sain finish	Akzo Nobel	SC900-4119-T
C85	White	Akzo Nobel	SC900-4119-T
C86	Acrylic	Akzo Nobel	SC900-4119-T
C87	Painted Sain finish	Akzo Nobel	SC900-4119-T
C88	White	Akzo Nobel	SC900-4119-T
C89	Acrylic	Akzo Nobel	SC900-4119-T
C90	Painted Sain finish	Akzo Nobel	SC900-4119-T
C91	White	Akzo Nobel	SC900-4119-T
C92	Acrylic	Akzo Nobel	SC900-4119-T
C93	Painted Sain finish	Akzo Nobel	SC900-4119-T
C94	White	Akzo Nobel	SC900-4119-T
C95	Acrylic	Akzo Nobel	SC900-4119-T
C96	Painted Sain finish	Akzo Nobel	SC900-4119-T
C97	White	Akzo Nobel	SC900-4119-T
C98	Acrylic	Akzo Nobel	SC900-4119-T
C99	Painted Sain finish	Akzo Nobel	SC900-4119-T
C100	White	Akzo Nobel	SC900-4119-T

RECEIVED

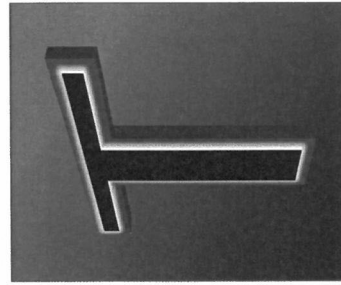
FEB 12 2024

PLANNING & DESIGN  
SERVICES

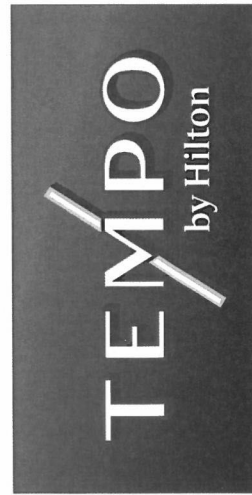


Detail

Not to scale



Night view



Night view

Remarques / Notes

correction des mesures RRB 2024-01-30

Client Approval / Approbation client

Signature:

Date: / /

FOR PERMITTING  
POUR PERMIS

REVISIONS	Date
01 Add r By Hilton - channel letters	CK 2023-05-16
02 Item (F) Made Detailed	CK 2023-05-16
03 Proposed changes to be made	RRB 2023-06-13
04 Proposed changes to be made	RRB 2023-06-13
05 measure has changed (A1-A2) total height 17'-2" to 17'	RRB 2023-06-29
06 measure has changed (A1-A2) total height 17'-2" to 17'	RRB 2023-06-29
07 measure has changed (A1-A2) total height 17'-2" to 17'	RRB 2023-06-29
08 measure has changed (A1-A2) total height 17'-2" to 17'	RRB 2023-06-29
09 measure has changed (A1-A2) total height 17'-2" to 17'	RRB 2023-06-29
10 measure has changed (A1-A2) total height 17'-2" to 17'	RRB 2023-06-29

Client	Site
TEMPO BY HILTON	
710 East Jefferson Street, Louisville, KY	
2022-09-20	2022-06382-GDWG-A1-CHAN
Jennifer Blanchard	
Rep.	
CK	

Ce dessin, incluant la conception graphique et les détails techniques, est la propriété exclusive de Transworld Signs Co. et ne doit pas être réutilisé sans l'autorisation préalable d'Ensignes Transworld Co.

This drawing, including graphic layout and technical details, is the property of Transworld Signs Co. and cannot be reproduced, copied, or used without prior authorization from Transworld Signs Co.

CONTACT

9310, boul. Parkway,  
Montreal (Quebec) H1J 1N7  
T : 514.352.8030 / F : 514.352.0386  
info@transworldsigns.com  
www.transworldsigns.com



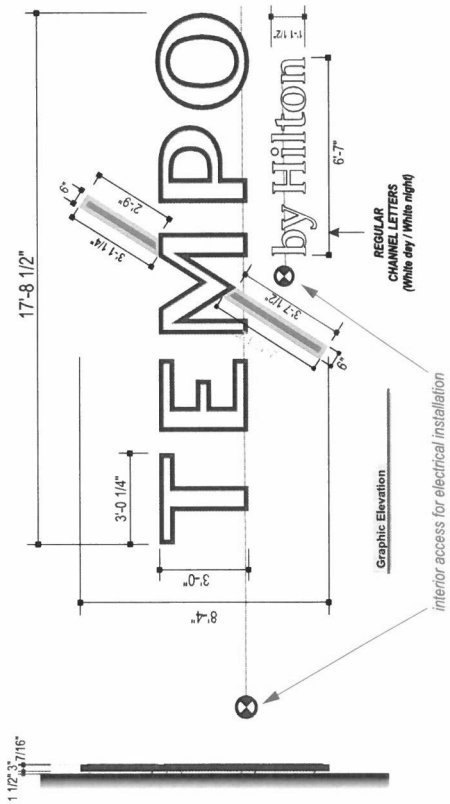
TRANSWORLD

RECEIVED  
FEB 12 2024  
PLANNING & DESIGN  
SERVICES

A2 1x

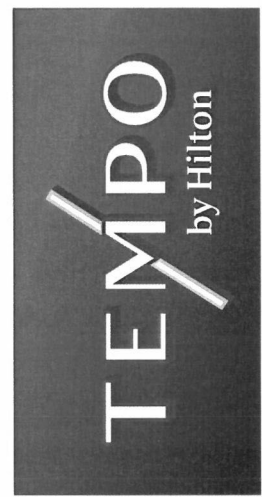
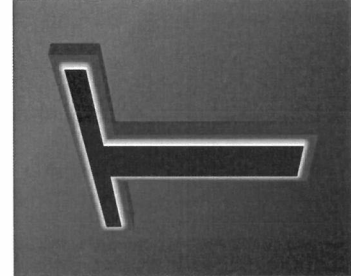
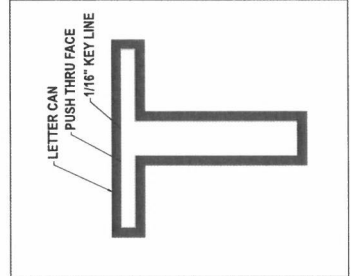
LETTRES CHANNEL ILLUMINÉES (niveau élevé) ÉLEVATION NORD

BÂTIMENT DE COULEUR FONCÉE



DESCRIPTION	DESCRIPTION
.125 ALUMINIUM ROUTED FACE	.125 ALUMINIUM ROUTED FACE
.063 RETOUR SOUDÉ EN ALUMINIUM	.063 RETOUR SOUDÉ EN ALUMINIUM
.177 DOS EN POLY CLAIR	.177 DOS EN POLY TRANSPARENT
.063 CLIPS HALO EN ALUMINIUM	.063 ALUMINIUM HALO CLIPS
.708 LETTRE CLAIR PUSH THRU avec VINYLE	.708 CLEAR PUSH THRU LETTER w VINYL
AVEC KEYLINE BLANCHE 1/16"	AVEC 1/16" KEYLINE BLANC
GE 24V TETRA MAX 6500 LED BLANCHES	GE 24V TETRA MAX 6500 WHITE LEDs
ou équivalent Sloan LED	ou équivalent Sloan LED
ALIMENTATION GE 24V 100W	ALIMENTATION GE 24V 100W
QUINCAILLERIE DE MONTAGE 3/8"	MATÉRIEL DE MONTAGE 3/8
BRÈSE-MUR	SUPPORTS DE 1-1/2" DE LONG
LE MÉTRONOME NEST PAS LE HALO ÉCLAIRÉ	PINCE MURALE
	LE MÉTRONOME NEST PAS ÉCLAIRÉ PAR LE HALO
	TRIM CAP NOIRE POUR LE MÉTRONOME

CUSTOM	SCALE ÉCH. 1/4" = 1'-0"
Area / Sup.	171.0 SQ. FT.
Weight / Poids	
Illumination	White LED
Voltage dispo. sur le site	120V
LED Temp.	6500K
Couleurs / Colours	
C1	Silver Metallic
C2	Black Vinyl
C3	White
C4	Malbec



Remarques / Notes  
correction des mesures RRB 2024-01-30

Client Approval / Approbation client

Signature:  
Date: / /

FOR PERMITTING  
POUR PERMIS

REVISIONS	Date
01	2023-03-16
02	2023-03-16
03	2023-03-16
04	2023-03-16
05	2023-03-16
06	2023-03-16
07	2023-03-16
08	2023-03-16
09	2023-03-16
10	2023-03-16

Client	Site
TEMPO BY HILTON	
710 East Jefferson Street, Louisville, KY	
2022-09-20	2022-06382-GDWG-A2-CHAN

AVIS / NOTICE  
Ce dessin, incluant la conception graphique et les détails techniques, est la propriété exclusive de Transworld Signs Co. et ne peut être reproduit, copié ou utilisé sans l'autorisation écrite préalable de Transworld Signs Co.  
This drawing, including graphic layout and technical details, is the property of Transworld Signs Co. and may not be reproduced, copied, or used without prior authorization from Transworld Signs Co.

CONTACT  
9310, boul. Parkway,  
Montréal (Québec) H1J 1N7  
T : 514.352.8030 / F : 514.352.0386  
info@transworldsigns.com  
www.transworldsigns.com

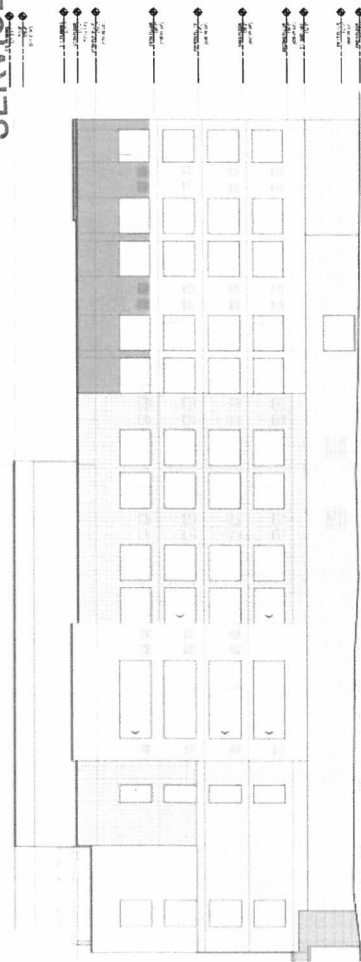


24-VAR14KE-0019

RECEIVED  
FEB 12 2024  
PLANNING & DESIGN  
SERVICES

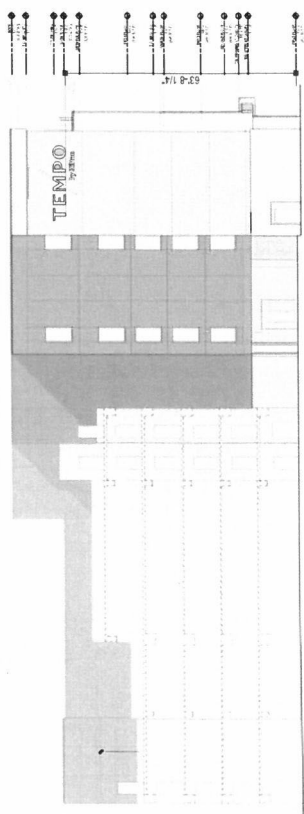
F ELEVATIONS

A2

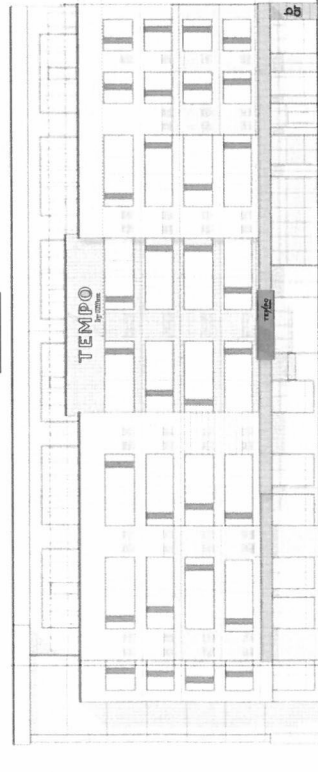


West Elevation

East Elevation

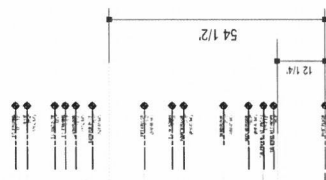


A1



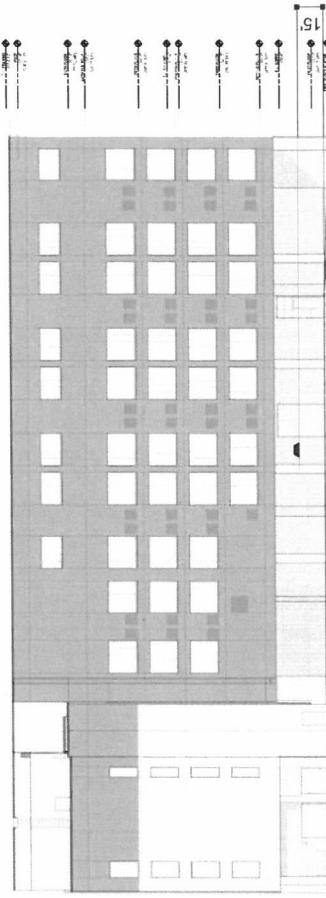
North Elevation

E



South Elevation

D



FOR PERMITTING  
POUR PERMIS

CONTACT

9310, boul. Parkway,  
Montreal (Québec) H1J 1N7  
T : 514.352.0030 / F : 514.352.0386  
info@transworldsigns.com  
www.transworldsigns.com

AVIS / NOTICE

Ce dessin, incluant la conception graphique et les détails techniques, est la propriété intellectuelle de Transworld Signs Co. et ne doit pas être réutilisé ou utilisé pour fabrication sans l'autorisation préalable d'Ensigns Transworld.  
This drawing, including graphic layout and technical details, is the property of Transworld Signs Co. and cannot be reproduced, copied, or used without prior authorization from Transworld Signs Co.

Client

TEMPO BY HILTON  
Autr. / Autr.  
710 East Jefferson Street, Louisville, KY  
Date  
2022-09-15 Jennifer Blanchard ND  
Rap.  
2022-06382-GDWG-ELEV

REVISIONS

Rev.	Date	Desc.
01	2023-10-27	OK Delete B-Option 2
02	2023-11-02	OK Add sign B & C / Add new sign A3 / Add new sign D1 (Canopy)
03	2023-11-02	OK Add sign E (Canopy) / Delete sign A3
04	2023-11-02	OK Add sign F (Canopy) / Delete sign B
05	2023-11-02	OK Prepare for permitting
06	2023-11-02	OK Measure has changed (A1) total height 17'-6" to 10'
07	2023-11-02	OK Material color is changed to white (matte/semi)
08	2023-11-02	OK Prepared for production
09	2023-11-02	OK Prepared for production



TRANSWORLD