

Louisville Metro Planning Commission Public Hearing - June 6, 2024

Louisville Metro Land Development & Transportation Committee - May 9, 2024

Neighborhood Meeting - December 6, 2023

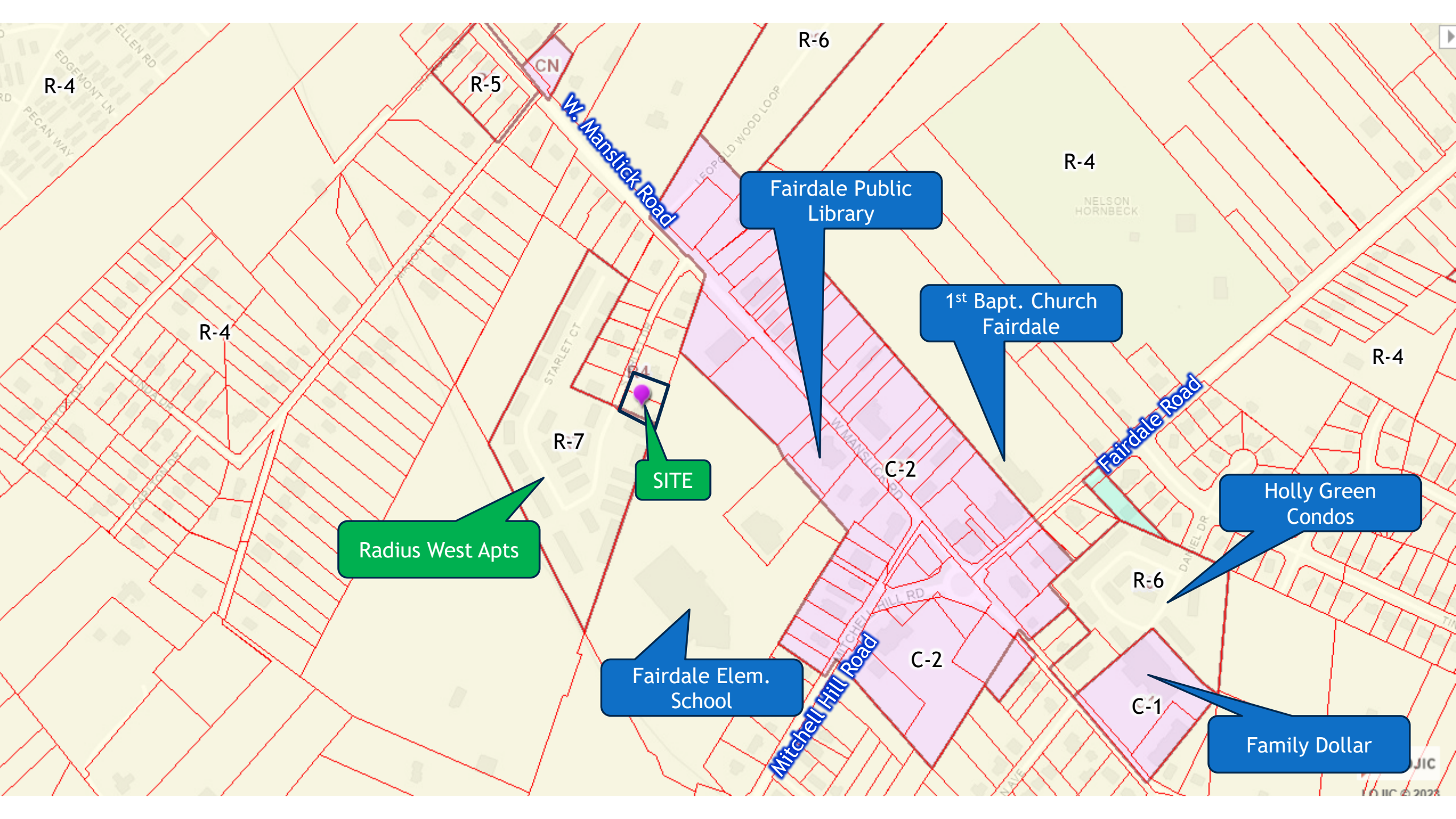
Docket No. 24-ZONE-0028

Zone Change from R-4 to R-7 to allow the existing building to be used as an office for the adjoining apartment complex on property located at 9713 and 9715 Starlet Drive

Clear Blue Company

Attorney: Bardenwerper, Talbott & Roberts, PLLC

Land Planners, Landscape Architects & Engineers: Milestone Design Group



Radius West Apts

SITE

Fairdale Elem.
School

Fairdale Public
Library

1st Bapt. Church
Fairdale

Holly Green
Condos

Family Dollar

R-4

R-5

R-6

R-4

R-4

R-7

C-2

R-4

R-6

C-2

C-1

EDGE MONT LN
PECAN WAY

STARLET CT

W. Manslick Road

LEOPOLD WOOD LOOP

MITCHELL HILL RD

Fairdale Road



Dollar General

R-4

R-4

R-4

R-4

Fairdale Public Library

C-2

SITE

R-7

R-4

Radius West Apts

Shack in the Back BBQ

Barber Shop Florist

Fairdale Elem. School

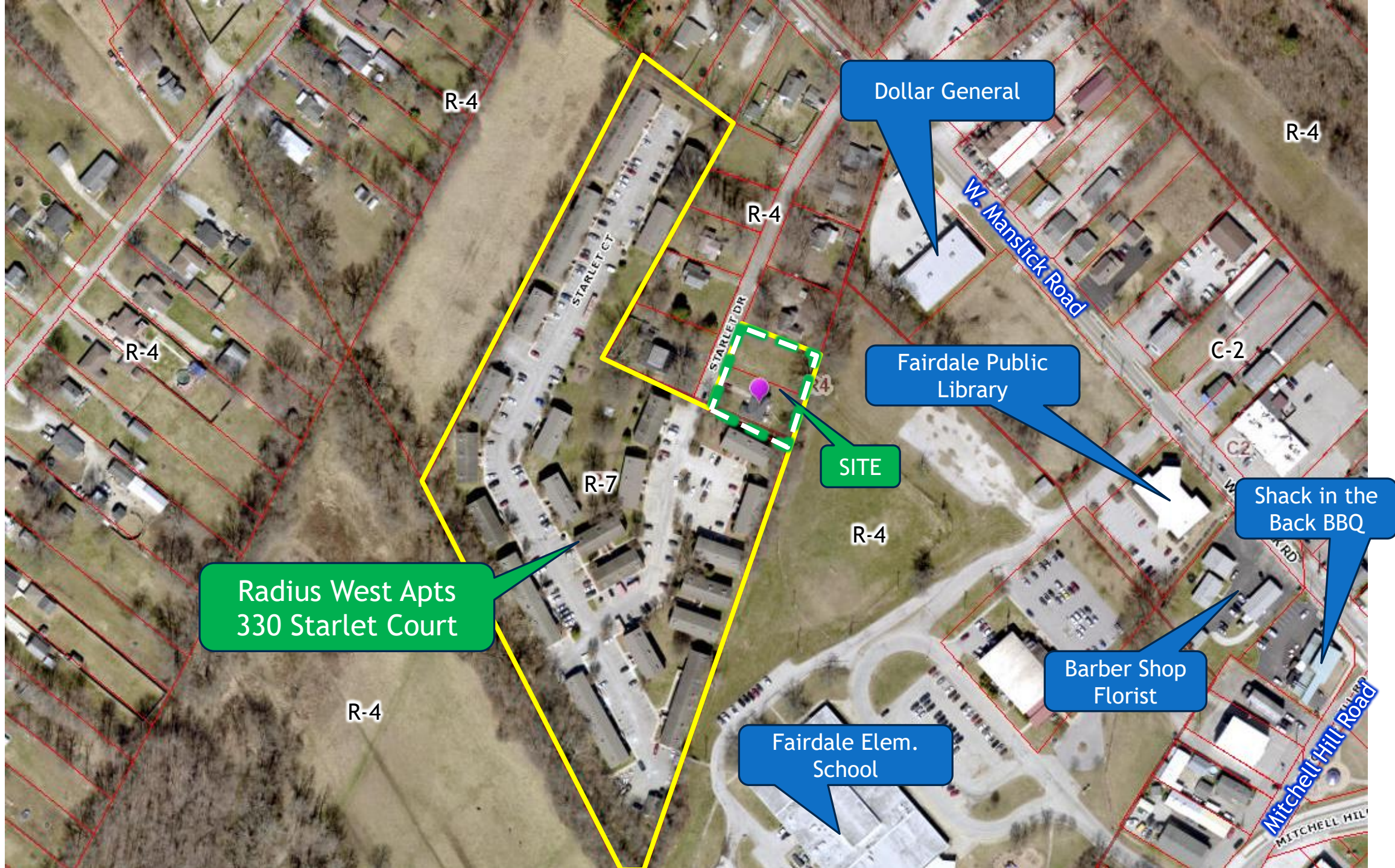
R-4

Mitchell Hill Road

W. Manslick Road

STARLET CT

STARLET DR



Dollar General

R-4

W. Manslick Road

Fairdale Public Library

C-2

SITE

Shack in the Back BBQ

Radius West Apts
330 Starlet Court

Barber Shop
Florist

Fairdale Elem.
School

Mitchell Hill Road

R-4

R-4

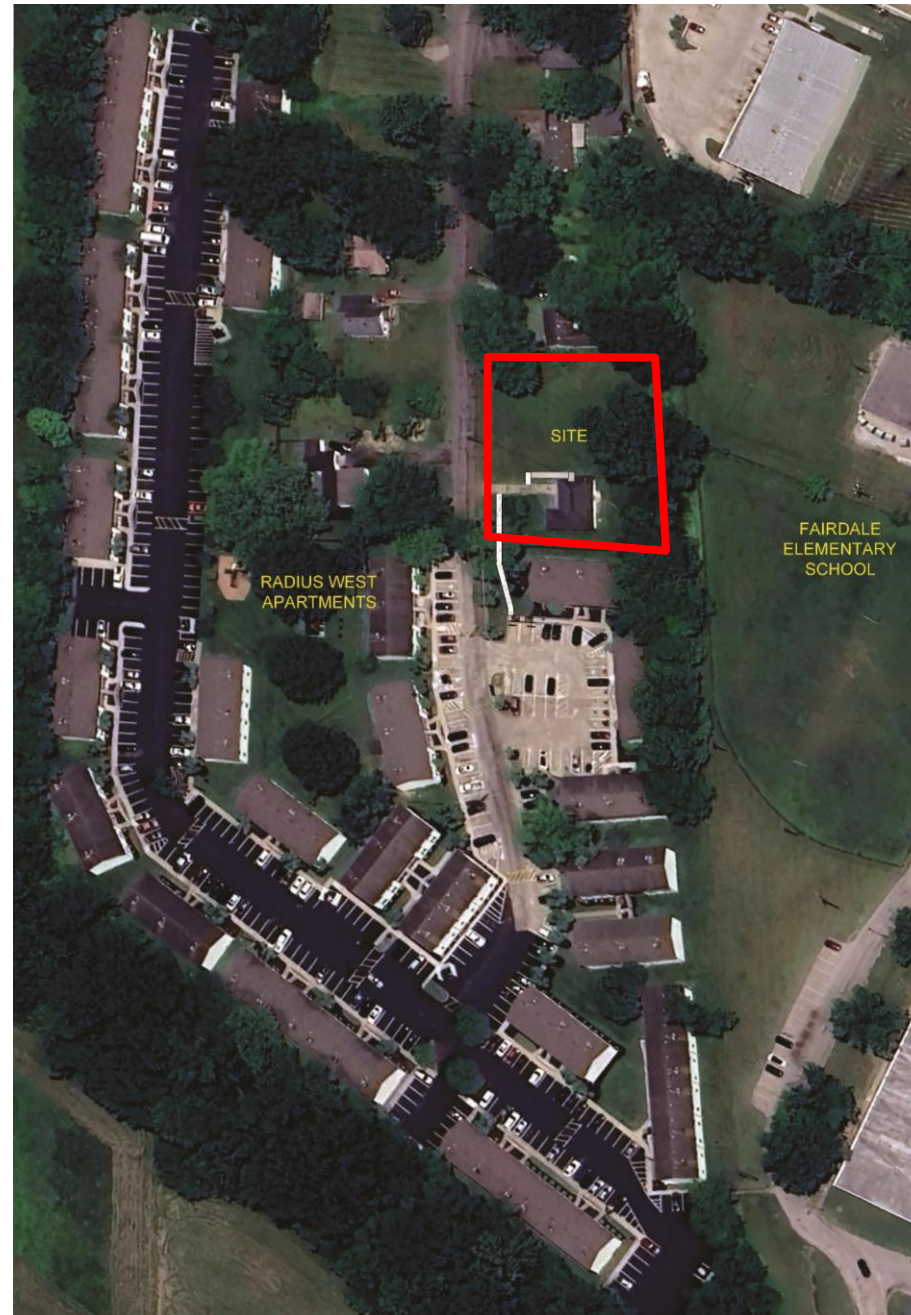
R-4

R-7

R-4

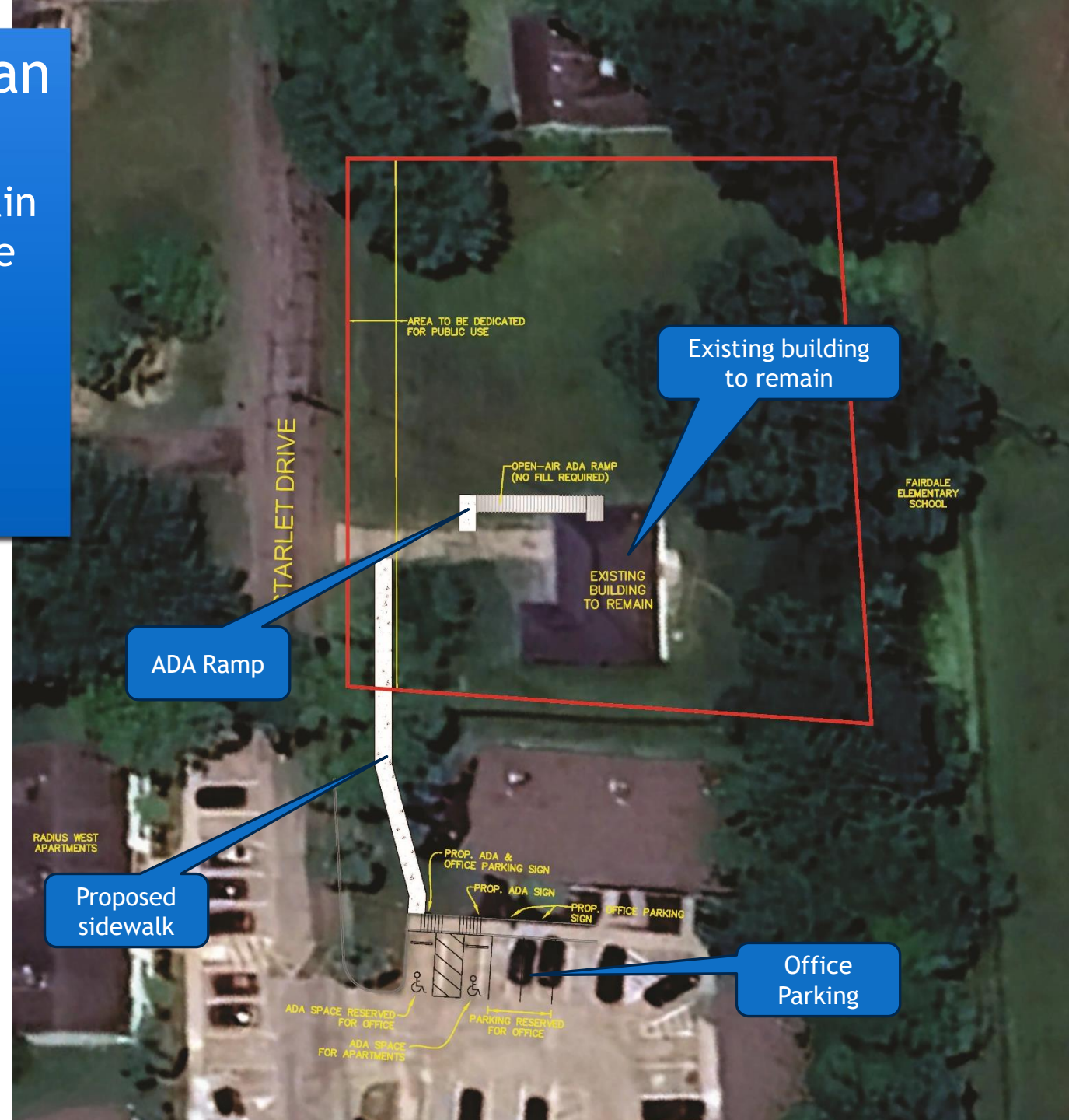
R-4

Proposed site within
overall Radius West
Apartment Community



Proposed Development Plan

- Existing building exterior to remain
- Reserved parking spaces for office located on adjoining apartment community
- Sidewalk proposed to connect office to apartment community
- ADA ramp installed at office



9800 Starlet Drive, Louisville, KY



← 9712 Starlet Dr
Louisville, Kentucky
Google Street View
Dec 2015 See more dates



View of site. Existing home to remain.



SITE

View of site and the adjoining Radius West Apartments.

Proposed Development Plan

Estate of Faith M. Dixon
5307 Park Road
Louisville, KY 40214
D.B. 775, Pg. 555
R4, VC

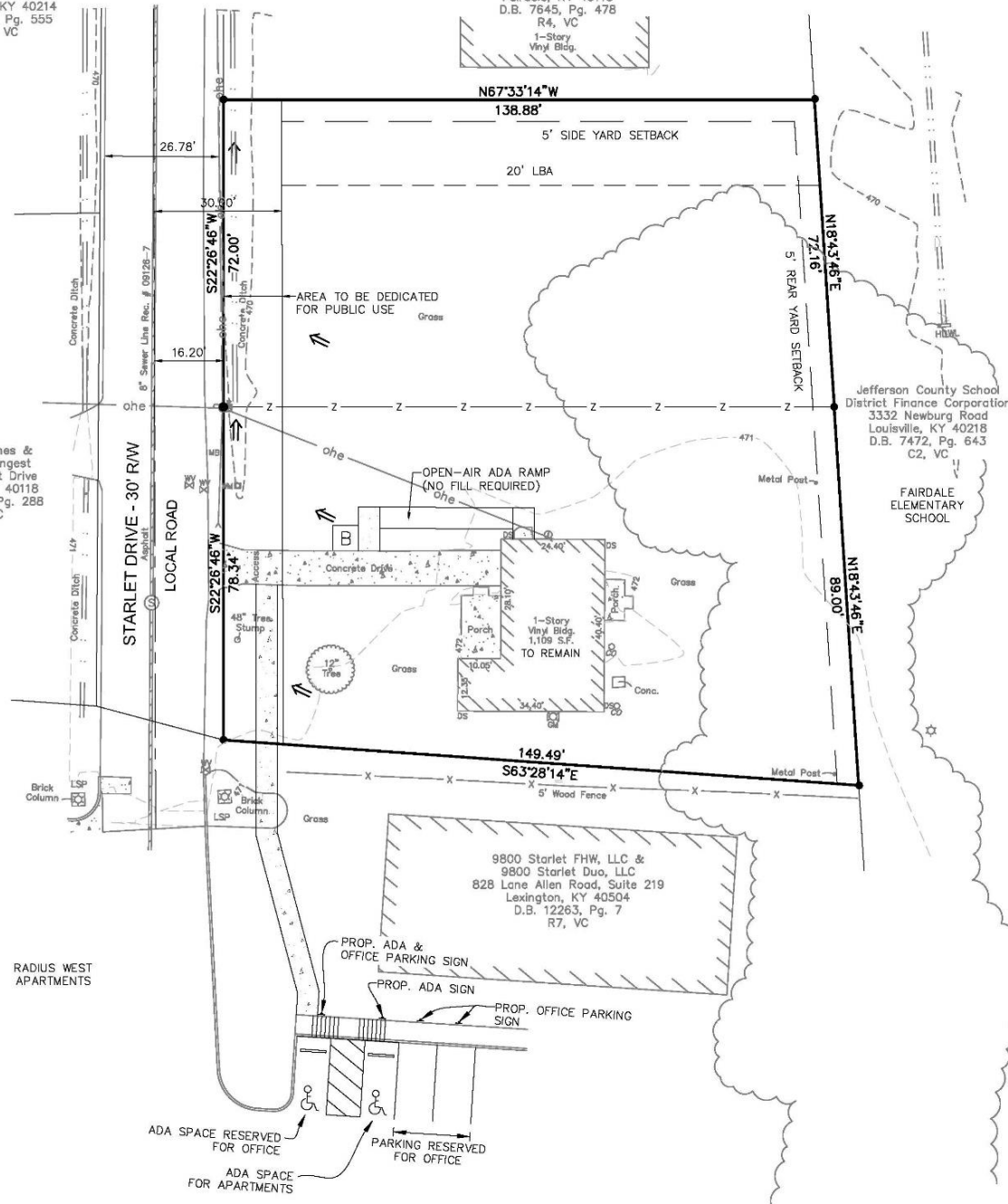
Rhona L. Becker
8711 Starlet Drive
Fairdale, KY 40118
D.B. 7645, Pg. 478
R4, VC
1-Story Vinyl Bldg.

Donald James &
Sally K. Longest
9712 Starlet Drive
Fairdale, KY 40118
D.B. 11075, Pg. 288
R4, VC

Jefferson County School
District Finance Corporation
3332 Newburg Road
Louisville, KY 40218
D.B. 7472, Pg. 643
C2, VC
FAIRDALE
ELEMENTARY
SCHOOL

9800 Starlet FHW, LLC &
9800 Starlet Duo, LLC
828 Lane Allen Road, Suite 219
Lexington, KY 40504
D.B. 12263, Pg. 7
R7, VC

RADIUS WEST
APARTMENTS





Proposed Binding Element

1. The office use on this property shall only be used as an accessory use for the adjacent multi-family property at 330 Starlet Court.
2. The property and the adjacent multi-family property will be consolidated when the applicant refinances the adjacent multi-family property at 330 Starlet Court.

Questions?

