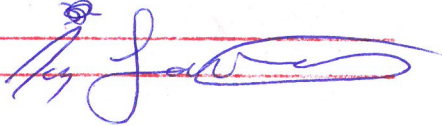
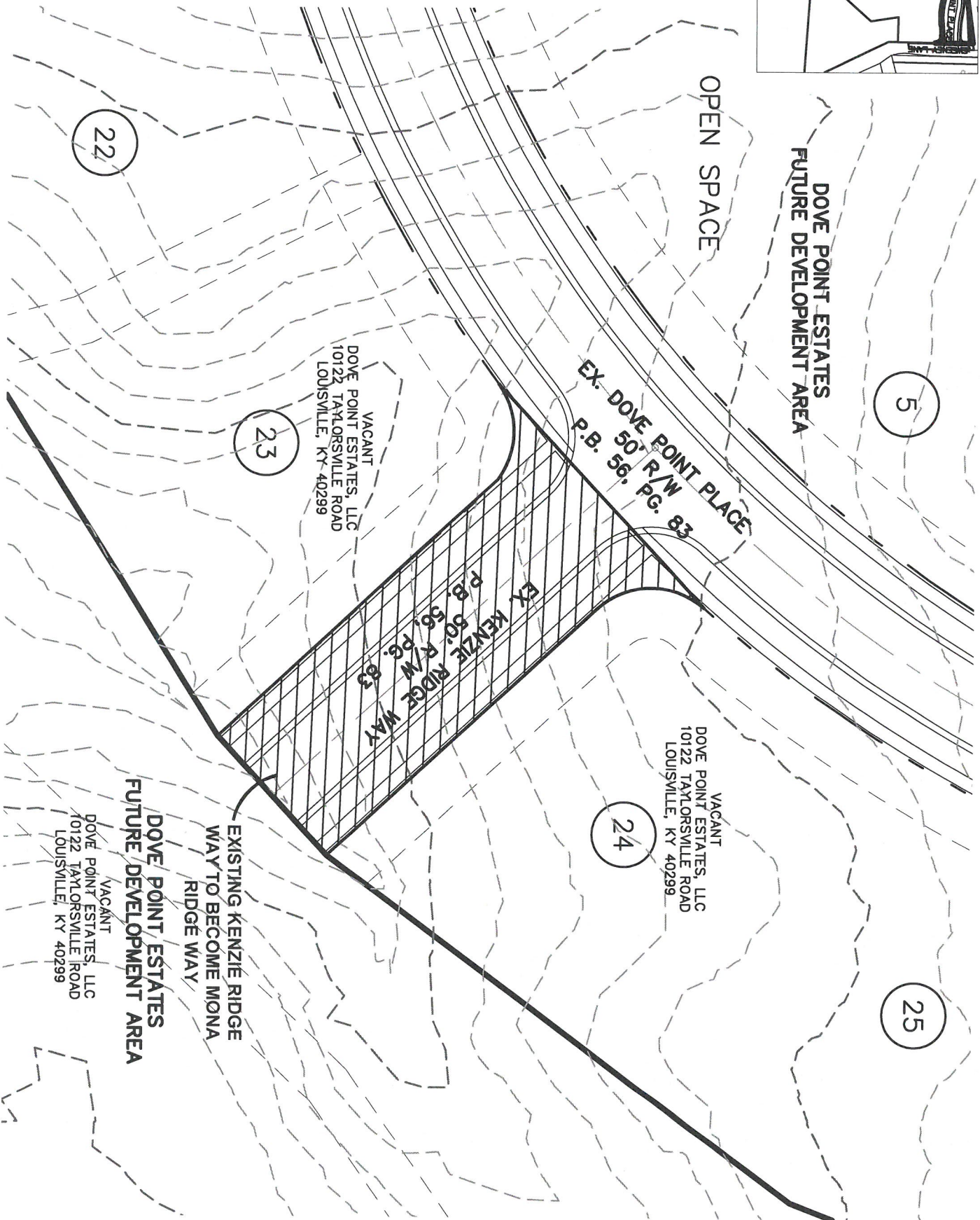


APPROVED:
LOUISVILLE METRO PLANNING
COMMISSION

DATE BY 

CASE # 17STREETS1028
RELATED CASE #: 16SUBDIV1006
GRAPHIC SCALE



SHEET TITLE:
STREET NAME CHANGE EXHIBIT
PROJECT TITLE:
KENZIE RIDGE WAY TO MONA RIDGE WAY



SABAK, WILSON & LINGO, INC
ENGINEERS, LANDSCAPE ARCHITECTS & PLANNERS
THE HENRY CLAY 600 S. THIRD STREET, LOUISVILLE, KENTUCKY 40202 (502) 884-6371