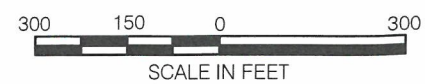


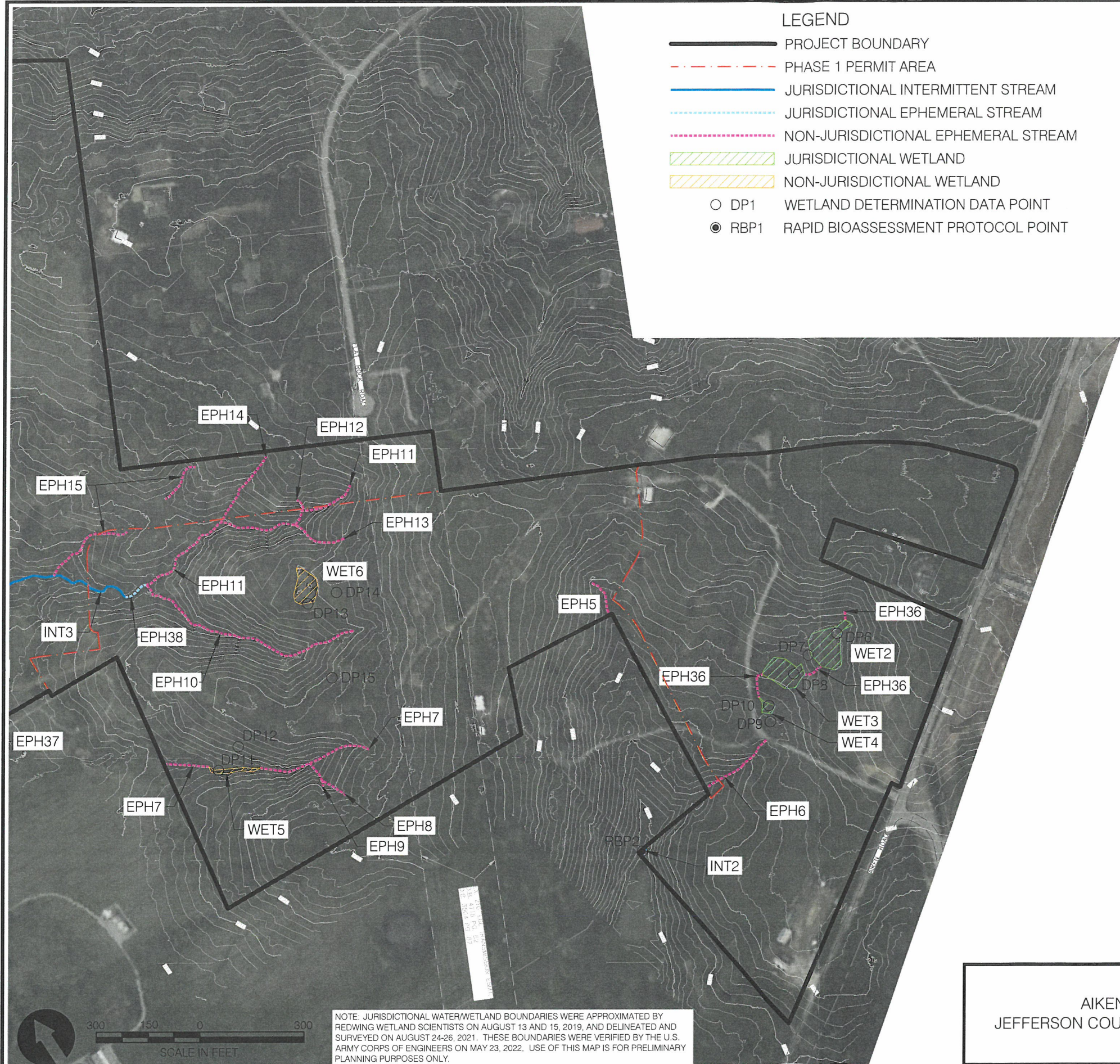
SOURCE: BASE MAP PROVIDED BY MINDEL, SCOTT & ASSOCIATES, INC.

WATER/WETLAND
LOCATION MAPFIGURE 3
SHEET 1 OF 2

REVISÉ DATE: 07-03-24

DRAWN BY: EDB/BJD

R:\ResGIS\Projects\KY111210_Aiken_North\CAD\111210-Water\WetlandBaseMap, Water Wetland Sht 2, Eric Bowman, 7/9/2024 2:35 PM



LEGEND

- PROJECT BOUNDARY
- PHASE 1 PERMIT AREA
- JURISDICTIONAL INTERMITTENT STREAM
- JURISDICTIONAL EPHEMERAL STREAM
- NON-JURISDICTIONAL EPHEMERAL STREAM
- JURISDICTIONAL WETLAND
- NON-JURISDICTIONAL WETLAND
- DP1 WETLAND DETERMINATION DATA POINT
- RBP1 RAPID BIOASSESSMENT PROTOCOL POINT

| Feature | Stream Length (feet) | Stream Width (feet) | Area (acres) | Status |
|--|----------------------|---------------------|--------------|--------------------|
| Floyds Fork | 2,895 | 100 | 6.646 | Jurisdictional |
| Perennial Stream 2 | 155 | 15 | 0.053 | Jurisdictional |
| Perennial Stream Total | 3,050 | | 6.699 | |
| Intermittent Stream 2 | 35 | 3.5 | 0.003 | Jurisdictional |
| Intermittent Stream 3 | 4,285 | 8 | 0.787 | Jurisdictional |
| Intermittent Stream 4 | 300 | 4.5 | 0.031 | Jurisdictional |
| Intermittent Stream 5 | 385 | 4.5 | 0.040 | Non-Jurisdictional |
| Jurisdictional Intermittent Stream Total | 4,620 | | 0.821 | |
| Non-Jurisdictional Intermittent Stream Total | 385 | | 0.040 | |
| Ephemeral Stream 5 | 110 | 1 | 0.003 | Non-Jurisdictional |
| Ephemeral Stream 6 | 220 | 2.5 | 0.013 | Non-Jurisdictional |
| Ephemeral Stream 7 | 455 | 1.5 | 0.016 | Non-Jurisdictional |
| Ephemeral Stream 8 | 140 | 2 | 0.006 | Non-Jurisdictional |
| Ephemeral Stream 9 | 20 | 2 | 0.001 | Non-Jurisdictional |
| Ephemeral Stream 10 | 760 | 2 | 0.035 | Non-Jurisdictional |
| Ephemeral Stream 11 | 735 | 2 | 0.034 | Non-Jurisdictional |
| Ephemeral Stream 12 | 45 | 1 | 0.001 | Non-Jurisdictional |
| Ephemeral Stream 13 | 160 | 1 | 0.004 | Non-Jurisdictional |
| Ephemeral Stream 14 | 230 | 1 | 0.005 | Non-Jurisdictional |
| Ephemeral Stream 15 | 410 | 1.5 | 0.014 | Non-Jurisdictional |
| Ephemeral Stream 16 | 115 | 3 | 0.008 | Non-Jurisdictional |
| Ephemeral Stream 17 | 140 | 2 | 0.006 | Jurisdictional |
| Ephemeral Stream 18 | 155 | 1.5 | 0.001 | Non-Jurisdictional |
| Ephemeral Stream 19 | 155 | 3 | 0.011 | Non-Jurisdictional |
| Ephemeral Stream 20 | 60 | 2.5 | 0.003 | Non-Jurisdictional |
| Ephemeral Stream 21 | 620 | 2 | 0.028 | Non-Jurisdictional |
| Ephemeral Stream 22 | 250 | 2 | 0.011 | Non-Jurisdictional |
| Ephemeral Stream 23 | 30 | 3 | 0.002 | Non-Jurisdictional |
| Ephemeral Stream 24 | 350 | 1.5 | 0.012 | Non-Jurisdictional |
| Ephemeral Stream 25 | 55 | 2.5 | 0.003 | Non-Jurisdictional |
| Ephemeral Stream 26 | 105 | 3 | 0.007 | Non-Jurisdictional |
| Ephemeral Stream 27 | 220 | 2 | 0.010 | Non-Jurisdictional |
| Ephemeral Stream 28 | 285 | 1.5 | 0.010 | Jurisdictional |
| Ephemeral Stream 29 | 35 | 1.5 | 0.001 | Non-Jurisdictional |
| Ephemeral Stream 30 | 250 | 2 | 0.011 | Non-Jurisdictional |
| Ephemeral Stream 31 | 305 | 3.5 | 0.025 | Non-Jurisdictional |
| Ephemeral Stream 32 | 100 | 3.5 | 0.008 | Non-Jurisdictional |
| Ephemeral Stream 33 | 420 | 2.5 | 0.024 | Non-Jurisdictional |
| Ephemeral Stream 34 | 125 | 2 | 0.006 | Non-Jurisdictional |
| Ephemeral Stream 36 | 160 | 2 | 0.007 | Non-Jurisdictional |
| Ephemeral Stream 37 | 20 | 1 | <0.001 | Non-Jurisdictional |
| Ephemeral Stream 38 | 72 | 1.5 | 0.002 | Jurisdictional |
| Jurisdictional Ephemeral Stream Total | 497 | | 0.019 | |
| Non-Jurisdictional Ephemeral Stream Total | 6,815 | | 0.311 | |
| Wetland 2 | --- | --- | 0.223 | Jurisdictional |
| Wetland 3 | --- | --- | 0.156 | Jurisdictional |
| Wetland 4 | --- | --- | 0.022 | Jurisdictional |
| Wetland 5 | --- | --- | 0.031 | Non-Jurisdictional |
| Wetland 6 | --- | --- | 0.121 | Non-Jurisdictional |
| Wetland 7 | --- | --- | 0.033 | Jurisdictional |
| Wetland 8 | --- | --- | 0.187 | Jurisdictional |
| Wetland 9 | --- | --- | 0.106 | Non-Jurisdictional |
| Wetland 10 | --- | --- | 0.356 | Non-Jurisdictional |
| Jurisdictional Wetland Total | --- | --- | 0.621 | |
| Non-Jurisdictional Wetland Total | --- | --- | 0.614 | |
| Jurisdictional Features Total | 8,167 | | 8.159 | |

SOURCE: BASE MAP PROVIDED BY MINDEL, SCOTT & ASSOCIATES, INC.

AIKEN 103
JEFFERSON COUNTY, KENTUCKY



WATER/WETLAND
LOCATION MAP

REVISED DATE: 07-03-24

DRAWN BY: EDB/BJD

FIGURE 3
SHEET 2 OF 2

NOTE: JURISDICTIONAL WATER/WETLAND BOUNDARIES WERE APPROXIMATED BY REDWING WETLAND SCIENTISTS ON AUGUST 13 AND 15, 2019, AND DELINEATED AND SURVEYED ON AUGUST 24-26, 2021. THESE BOUNDARIES WERE VERIFIED BY THE U.S. ARMY CORPS OF ENGINEERS ON MAY 23, 2022. USE OF THIS MAP IS FOR PRELIMINARY PLANNING PURPOSES ONLY.