

Louisville/Jefferson County Environmental Trust

Established by Ordinance Originally
Adopted 12-20-1994



Governed by an Oversight Board

- 5 Citizen Members plus the
- Executive Director MSD
 - Director Louisville Parks & Recreation
 - Director of Metro Planning & Design Services
 - Director of Public Works & Assets





Louisville/Jefferson County Environmental Trust Support Staff

Jefferson County Attorney's Office

Metro Agency Staff

Private & Professional Advisors

Part Time Project Manager





9 Member Board with citizen expertise in different facets of land management ranging from natural areas, working farmlands, wetlands, woodlands, wildlife habitats and urban open spaces



The Louisville/Jefferson County Environmental Trust was the second land trust in Kentucky to attain accreditation through The Land Trust Accreditation Commission and one of the few quasi-governmental land trust to hold this designation.

CONSERVATION EASEMENTS



Voluntary legal agreement between a land owner and a land trust or government agency that permanently limits the use of the land to protect its **conservation values for the benefit of the public and the landowner.**



Conservation Easements as of January 2025

20 Easements	1721 acres	Major Conservation Values
4- Wetlands	160 acres	Flood Control, Water Quality, Wildlife Habitat
6- Wildlife/Scenic	205.8 acres	Scenic Vistas, Wildlife Habitat, Watershed Mgt.
8 – Working Farms	1019.3 acres	Prime Farmland, Watershed Mgt, Water Quality
2- Equine Farms	212.7	Prime Farmland, Scenic Vista, Watershed Mgt



Our Responsibility

- Monitor the CE Annually
- Protect the Conservation Values
 - Defend the CE

IN PERPETUITY



Conservation Values Protected by Conservation Easements

Prime Farmland

Grazing Lands

Upland Wildlife Habitats

Critical Wetlands

Water Quality Attributes

Watershed Health Qualities

Stormwater Infiltration

Woodlands & Tree Canopies

Scenic Open Spaces

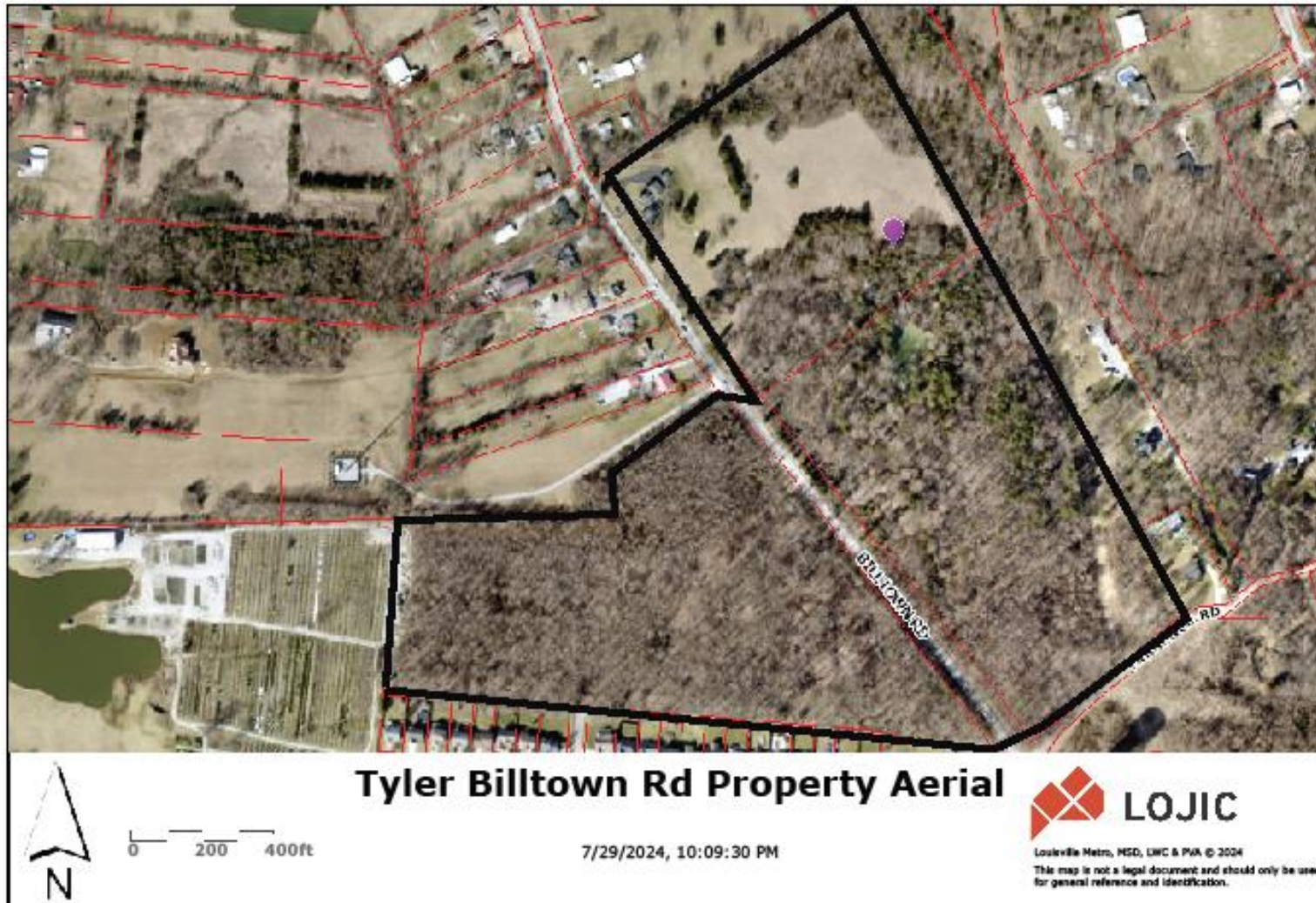
Air Quality Attributes

Façade & Historic Preservation Easements

- Clover Hill/Youngland Lot Historic Preservation Easement
- George Herr House
- James Clore House
- Levine Bates House Façade
- Louisville Glassworks Façade
- Old Citizens National Life
- Old Louisville Trust Building



Billtown Road Property owned by Mary Ann Tyler





Tyler Conservation Easement

5801 and 5900 Billtown Road between Jeffersontown and the Gene Snyder Freeway. The property has been in the Tyler Family for many years and was once part of the vast Tyler settlement that includes the historic Blackacre State Nature Preserves. A concrete foundation remnant of the original Tyler home that dates back to the late 1800's is on the property.

54.33 acres, most of which is woodland, except about 4 acres that is grassland and the footprint where an existing single- family residence is located.

Includes 1300 linear feet of an unnamed tributary that flow to Chenoweth Run Creek which flows to Floyds Fork and 1970 linear feet of frontage on Billtown Road.

No Public Access although the property exhibits a scenic corridor of woods on both the east and west side of Billtown Road and along Tarrence Road.

The 54- acre tract is comprised 3 separate surveyed parcels. Each parcel will reserve a single residential site located within a 2- acre building envelope. One reserved building envelope overlays the footprint of the existing frame farmhouse..

The eastern tract of woodlands has some hydric soils with tree species that are adapted to "wet feet" The hydric area is a moist regime wetland and contain the values of protecting water quality, wildlife habitat and flood control.

A decorative pattern of stylized leaves in various shades of light gray, scattered across the left side of the slide. The leaves have white outlines and some internal white lines, giving them a geometric, almost architectural feel.

Thank you

Kurt Mason, Chair
LJCET Oversight Board