

1

AUGUST/2015  
by: DARNELL FARRIS  
R. KEVIN MILBURN

1209 GARVIN PLACE

HENSLEY RESIDENCE  
ADDITION PROPOSAL

RECEIVED  
AUG 14 2015  
PLANNING &  
DESIGN SERVICES

15C0A1161



AUGUST/2015  
by: DARNELL FARRIS  
R. KEVIN MILBURN

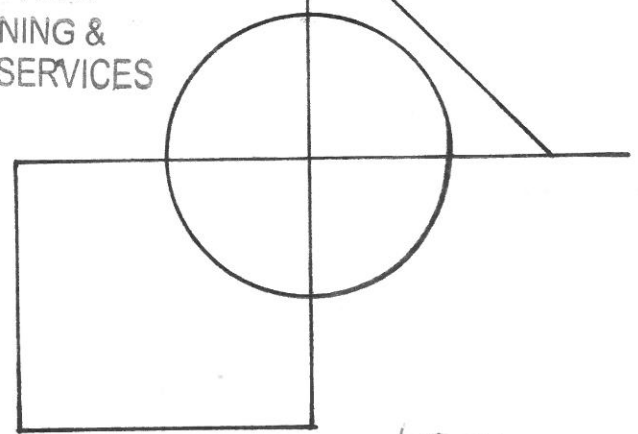
HENSLEY RESIDENCE  
ADDITION PROPOSAL

1209 GARVIN PLACE

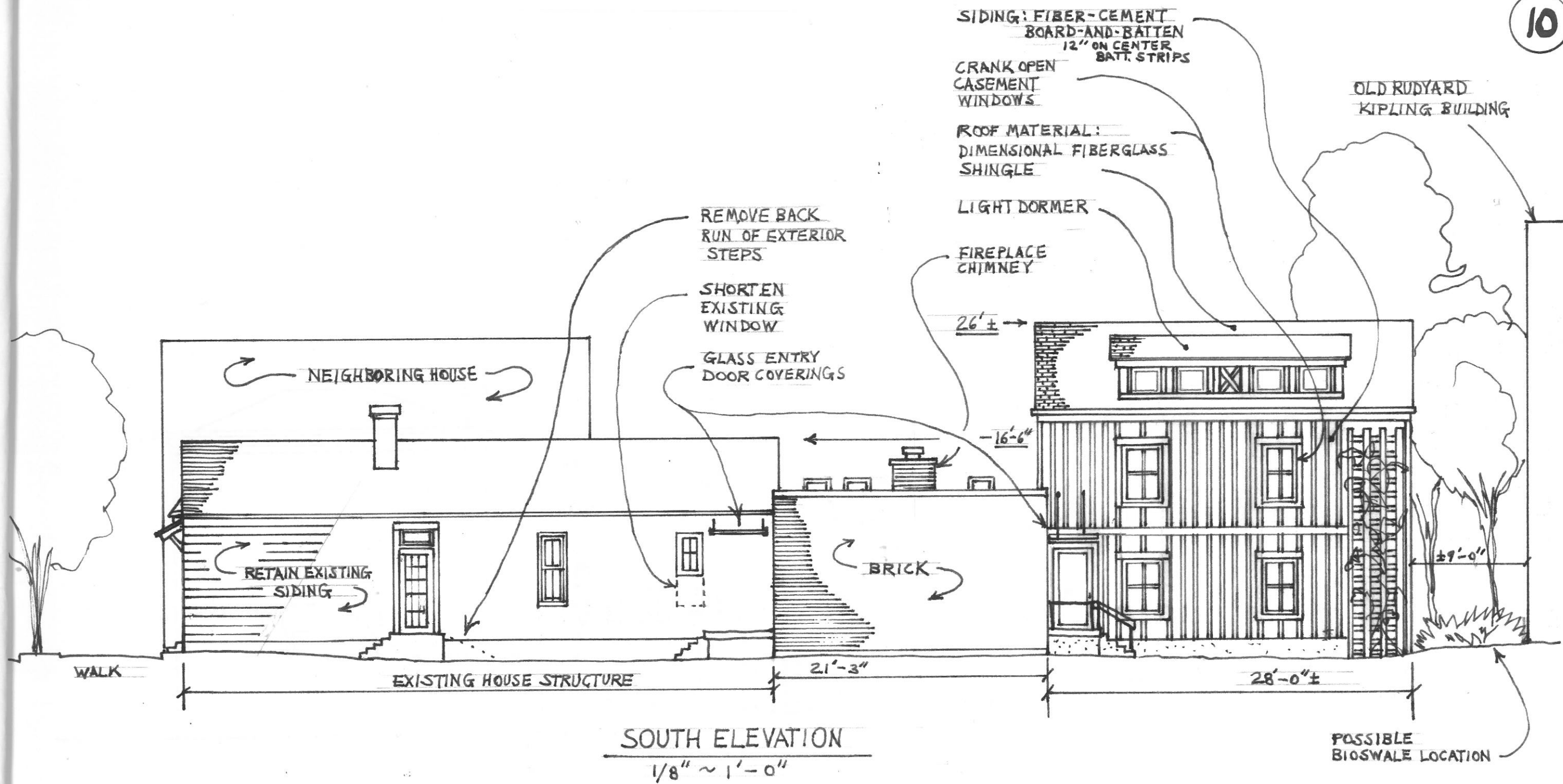
RECEIVED  
AUG 14 2015  
PLANNING &  
DESIGN SERVICES



WEST ELEVATION  
SCALE 1/8" ~ 1'-0"



1500A11601



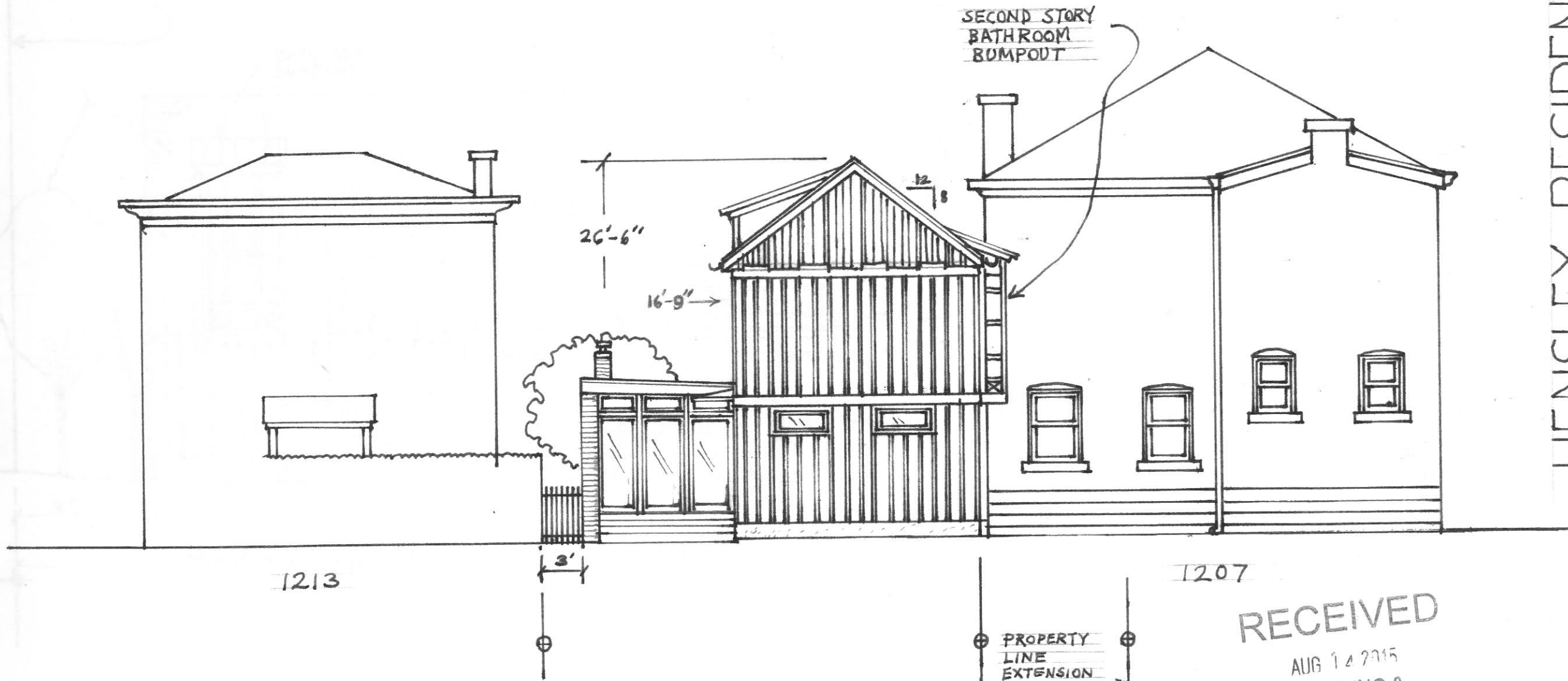
SOUTH ELEVATION  
1/8" ~ 1'-0"

RECEIVED  
AUG 14 2015  
PLANNING &  
DESIGN SERVICES

AUGUST/2015  
by: DARNELL FARRIS  
R. KEVIN MILBURN  
1209 GARVIN PLACE  
HENSLY RESIDENCE  
ADDITION PROPOSAL



15CA1161



EAST ELEVATION  
SCALE  $\frac{1}{8}'' \sim 1'-0''$

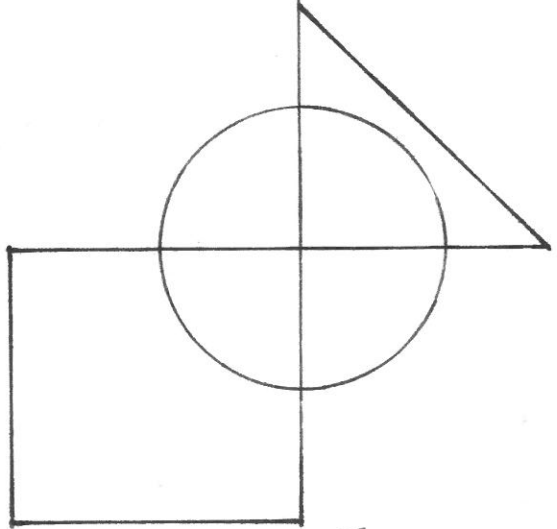
RECEIVED  
AUG 14 2015  
PLANNING &  
DESIGN SERVICES

HENSLEY RESIDENCE  
ADDITION PROPOSAL

1209 GARVIN PLACE

AUGUST / 2015  
by: DARNELL FARRIS  
R. KELVIN MILBURN

11



15COA1161

AUGUST/2015  
by: DARNELL FARRIS  
R. KEVIN MILBURN

1209 GARVIN PLACE

HENSLEY RESIDENCE  
ADDITION PROPOSAL

RECEIVED  
AUG 14 2015  
PLANNING &  
DESIGN SERVICES

SC01161

