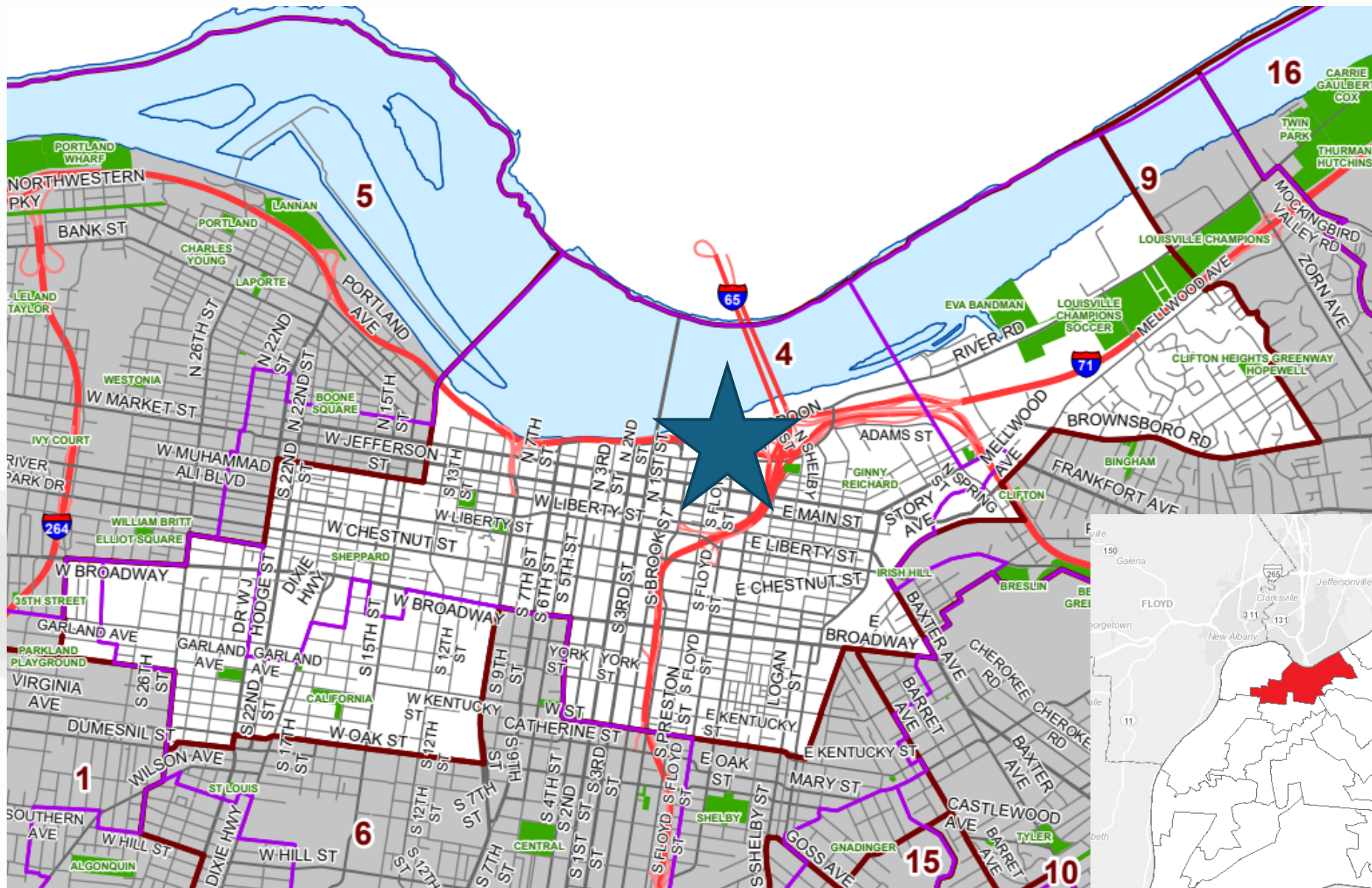


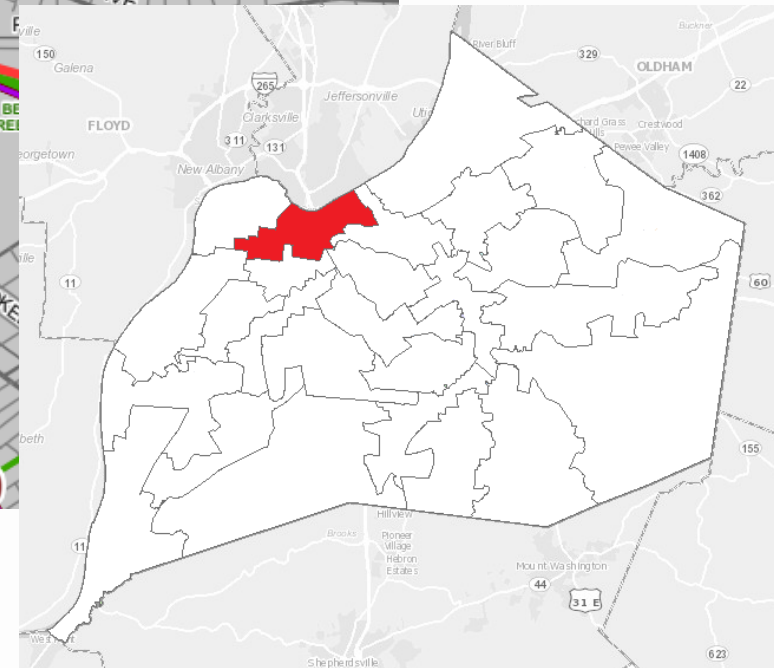
**O-122-25**  
**24-STRCLOSURE-0034**  
**Sluggers Field Right-of-  
Way Closure**

**Planning and Zoning Committee**  
**June 3, 2025**





**Slugger Field Right of Way  
District 4- Ken Herndon**



# REQUEST

- **Closure of Public Right-of-Way**



# CASE SUMMARY

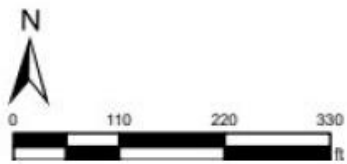
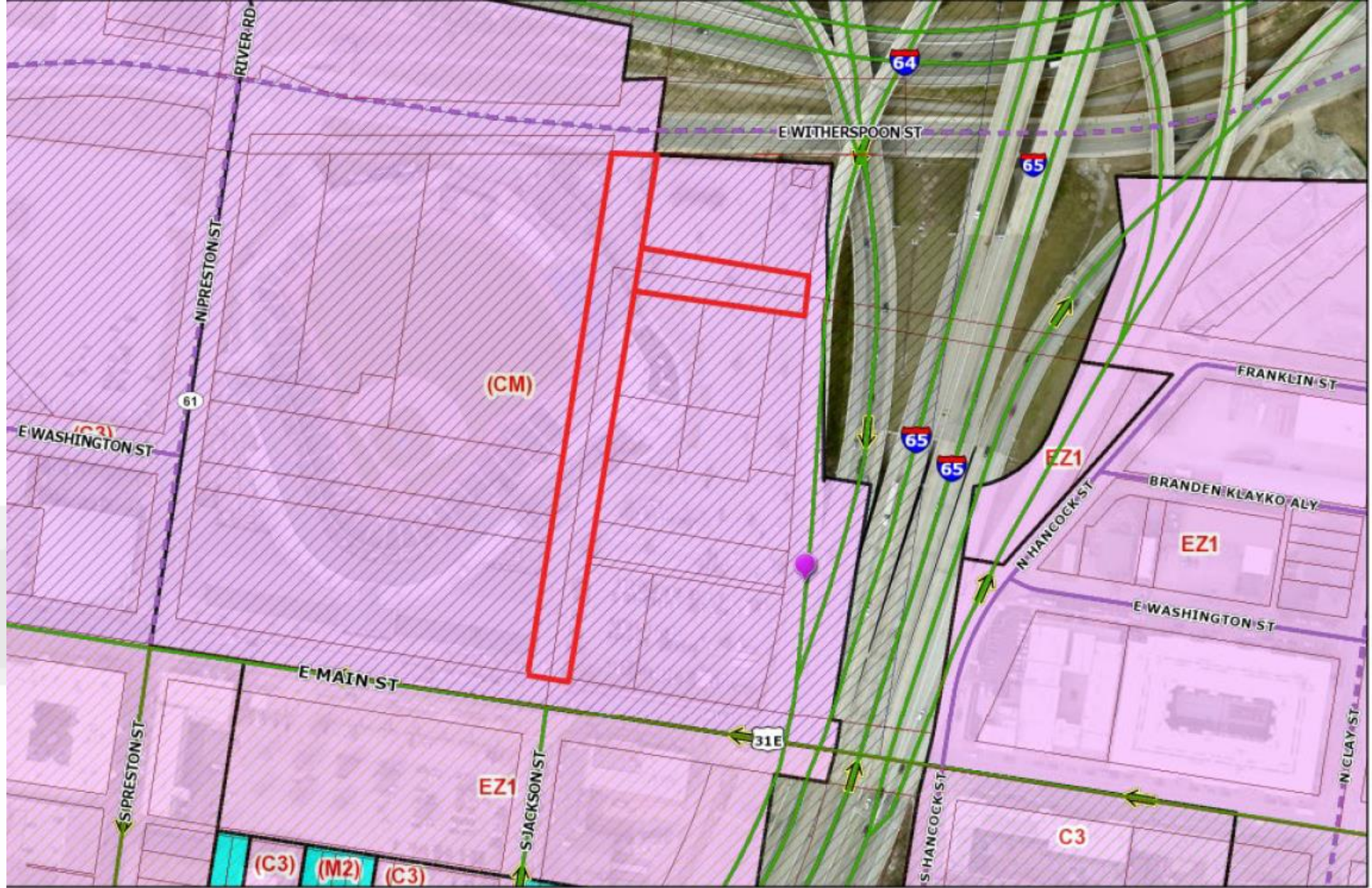
- ROW in existing parking lot that serves Slugger Field
- Between E Main & E Witherspoon Streets
- C-M; Downtown
- Metro owned properties

# TECHNICAL REVIEW

- **Maintain public facilities**
- **Agency comments addressed**

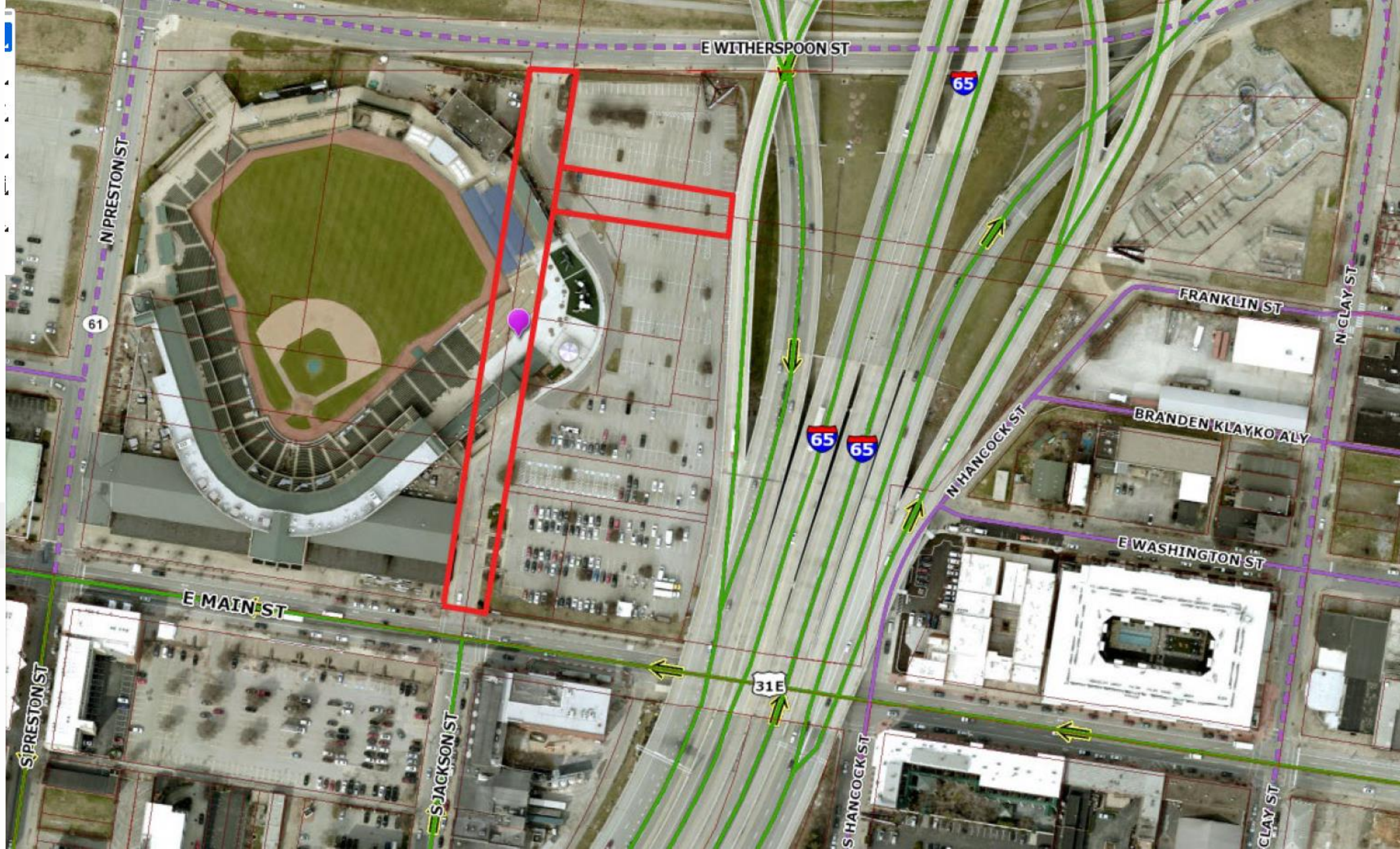






Wednesday, April 9, 2025 | 10:09 AM

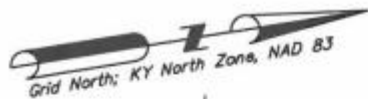












Pcl 018C-0023  
401 E. Main St.  
Metro Louisville  
D.B. 11419, Pg. 759

Pcl #018C-0011  
103 N. Preson St.  
Metro Louisville  
D.B. 11419, Pg. 759

Pcl #018C-0010  
401 E. Main St.  
Metro Louisville  
D.B. 11419, Pg. 759

Pcl #018C-0009  
410 E. Witherspoon St.  
Metro Louisville  
D.B. 11419, Pg. 759

General Utility Easement  
To Be Granted  
46,470 Sq. Ft.

portion of  
Jackson Street  
To Be Closed  
46,470 Sq. Ft.

N08°58'40"E 769.94' (total)

Jackson Street  
60' ROW  
(as shown in PVA)

S08°58'40"W 779.05' (total)

Main Street  
90' ROW  
(as shown in PVA;  
no deed found)

N81°07'34"W  
N: 278,543.74  
E: 1,211,506.90

Electric Easement  
D.B. 11305, Pg. 953

Pcl #018E-0054  
300 Jackson St.  
Metro Louisville  
D.B. 11419, Pg. 759

Pcl #018E-55  
302 S. Jackson St.  
Metro Louisville  
D.B. 11419, Pg. 759

Pcl #018E-53  
304 S. Jackson St.  
Metro Louisville  
D.B. 11419, Pg. 759

Pcl #018E-0051  
501 E. Main St.  
Metro Louisville  
D.B. 11419, Pg. 759

Pcl #018E-0016  
Jackson St.  
Metro Louisville  
D.B. 11419, Pg. 759

Matchline Sheet 3 of 3

Sheet 2 of 3

### Reversion Areas—Jackson

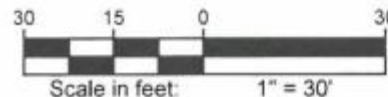
Total Closure: 46,470 sq. ft.

Reversions:

- (F1) Pcl 018D-0001 Pcl A1 - 10,230 sq. ft.
- (F2) Pcl 018D-0025 Pcl A2 - 570 sq. ft.
- (F3) Pcl 018E-0020 Pcl A3 - 3,234 sq. ft.
- (F4) Pcl 018E-0064 Pcl A4 - 5,400 sq. ft.
- (F5) Pcl 018E-0022 Pcl A5 - 5,400 sq. ft.
- (F6) Pcl 018E-0020 Pcl A6 - 11,520 sq. ft.
- (F7) Pcl 018D-0001 Pcl A7 - 10,116 sq. ft.

### Legend

- Utility MH
- Curb Inlet
- Sanitary MH
- Light Pole
- Existing Sanitary Sewer Line
- Denotes set 2" Mag Nail and Shiner #3856, or as described.
- Denotes found 5/8" Iron Pin and Cap #3856.
- Denotes found 2" Mag Nail and Shiner #3856.
- Denotes Existing Street to be closed and General Utility Easement to be granted.
- Water Valve
- Fire Hydrant
- Gas Valve



### Street Closure Exhibit

**Jackson Street**  
between E. Main St. and E. Witherspoon St.

Applicant: Louisville/Jefferson County  
Metro Government  
527 West Jefferson Street, 4th Floor  
Louisville, KY 40202



Surveying & Engineering

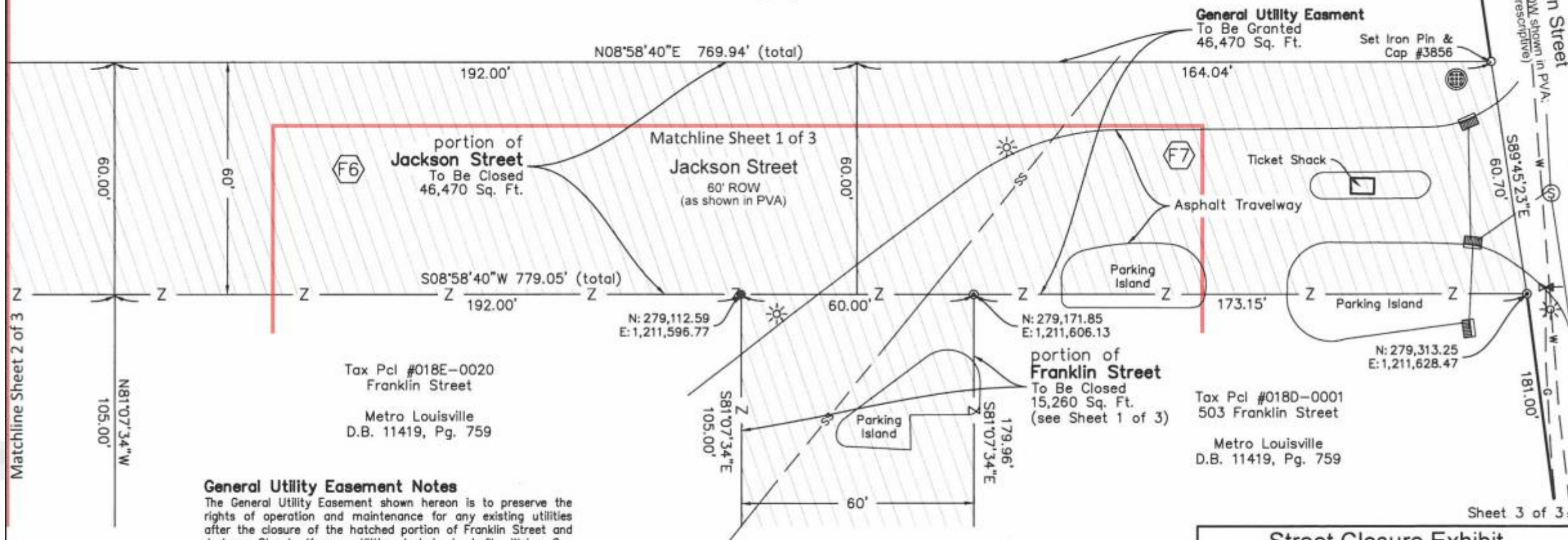
9920 Corporate Campus Drive  
Suite 1200  
Louisville, Kentucky 40223  
Phone: 502-585-2222

Rev. 3/13/2025



Pcl #018C-0009  
410 E. Witherspoon St.

Metro Louisville  
D.B. 11419, Pg. 759



Matchline Sheet 2 of 3

Sheet 3 of 3

### General Utility Easement Notes

The General Utility Easement shown hereon is to preserve the rights of operation and maintenance for any existing utilities after the closure of the hatched portion of Franklin Street and Jackson Street. Known utilities include Louisville Water Co., Louisville Gas & Electric, and Metropolitan Sewer District. Others utilities may exist and were not discovered.

Metropolitan Sewer District specifically reserves: Easements for sanitary sewer and drainage purposes are hereby reserved on, over and under the strips of land and spaces as defined and marked "General Utility Easement", together with the right of ingress and egress over all lots to and from the easements, for construction, operation, maintenance of sewers and drains over, under and across said land. No permanent structure of any kind shall be placed on, over or under the land which is subject to said easements without agreement from MSD. The easement shall provide for the benefit of the land and said sewers and drains may be constructed by the Metropolitan Sewer District, or by any other public agency having legal authority for such construction, or by others subject to the approval by the aforesaid sewer district.

**General Utility Easement**  
To Be Granted  
46,470 Sq. Ft.

Set Iron Pin &  
Cap #3856

Tax Pcl #018E-0020  
Franklin Street

Metro Louisville  
D.B. 11419, Pg. 759

portion of  
**Franklin Street**  
To Be Closed  
15,260 Sq. Ft.  
(see Sheet 1 of 3)

Tax Pcl #018D-0001  
503 Franklin Street

Metro Louisville  
D.B. 11419, Pg. 759

## Street Closure Exhibit

**Jackson Street**  
between E. Main St. and E. Witherspoon St.

Applicant: Louisville/Jefferson County  
Metro Government  
527 West Jefferson Street, 4th Floor  
Louisville, KY 40202



Surveying • Engineering

9920 Corporate Campus Drive  
Suite 1200  
Louisville, Kentucky 40223  
Phone: 502-585-2222

Rev. 03/13/2025

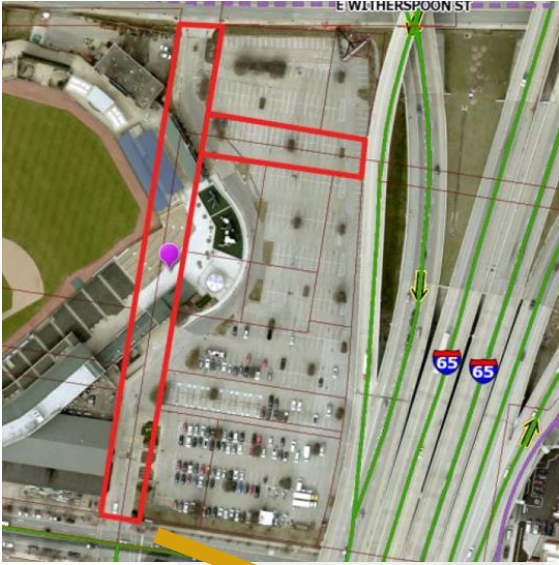
Scale 1"=30'

Proj. #24340

Date 12/9/2024



# SUBJECT PROPERTY



Google

Image capture: Aug 2024 © 2025 Google



# PUBLIC MEETINGS

- ❖ LD&T Meeting on April 17, 2025
- ❖ Planning Commission Consent Agenda on April 24, 2025
- ❖ Motion to recommend approval of the closure passed by a vote of 6-0

