

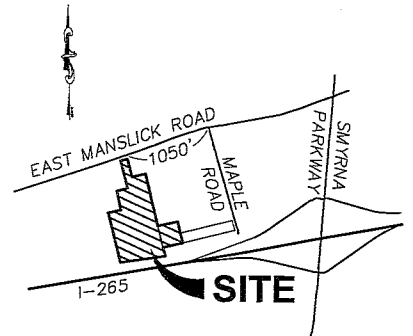
Legal Description

Zoning Change R-4 to PRD

Beginning in the south right-of-way line of East Manslick Road and the west line of a tract conveyed to Ann B. Moock as recorded in Deed Book 12038, Page 253 in the office of the clerk of Jefferson County, Kentucky; thence with the west line of Moock South 16°11'11" East, 257.70 feet to a 5/8" pin; thence with the south line of Moock North 73°49'56" East, 149.95 feet to a 5/8" pin to the west line of a tract conveyed to Donald Scott Bowman as recorded in Deed Book 8085, Page 542 in the aforementioned clerk's office; thence with the west line of Bowman South 15°59'12" East, 665.61 feet to a 1" pipe in the southwest corner of a tract conveyed to Robert and Kimberly Fox as recorded in Deed Book 6609, Page 774 in the aforementioned clerk's office; thence with the south line of Fox North 73°47'39" East, 231.69 feet to a 1/2" pipe in the northwest corner of a tract conveyed to Joshua Smith and Dezarae Perkins as recorded in Deed Book 11127, Page 9 in the aforementioned clerk's office; thence with the west line of Smith and Perkins South 16°17'22" East, 98.65 feet to a 1 1/2" pipe; thence with a new division line on a tract conveyed to Cody Layne McFarland as recorded in Deed Book 9898, Page 386 in the aforementioned clerk's office; South 16°17'22" East, 99.57 feet to a 5/8" pin in the north line of a tract conveyed to Ruben Reyes as recorded in Deed Book 12813, Page 189; thence with the north line of Reyes South 73°54'10" West, 232.74 feet to a 1" pipe in the east line of a tract conveyed to Manslick Development, LLC as recorded in Deed Book 12455, Page 697 in the aforementioned clerk's office; thence with the east line of Manslick Development, LLC South 15°59'12" East, 77.85 feet to a 5/8" pin in the north right-of-way line of Gene Snyder Freeway; thence with the north line of the Gene Snyder Freeway South 79°56'39" West, 521.54 feet to a 1/2" pin in the southeast corner of a tract conveyed to Dennis and Maria Priddy as recorded in Deed Book 6717, Page 848 in the aforementioned clerk's office; thence with the east line of Priddy North 16°07'05" West, 632.64 to a 5/8" pin; thence leaving Priddy Tract North 73°48'09" East, 161.17 feet to a 5/8" pin; thence North 16°11'51" West, 240.00 to a 3/4" pin in the south line of a tract conveyed to Robert Bruce Hegler as recorded in Deed Book 6618, Page 887 in the aforementioned clerk's office; thence with the south and east line of Hegler North 73°40'52" East, 150.07 feet to a 5/8" pin; thence North 16°18'56" West, 267.17 feet to a 5/8" pin in the south right-of-way line of East Manslick Road; thence with the south right-of-way line of East Manslick Road North 70°53'44" East 60.62 feet to the point of beginning containing 11.330 acres.

Being a portion of the tract conveyed to Manslick Development, LLC as recorded in Deed Book 12455, Page 697 and being Residual Tract 2 as shown on the Minor Subdivision Plat recorded in Deed Book 12707, Page 367 and a portion of the tract conveyed to Cody Layne McFarland as recorded in Deed Book 9898, Page 386 in the office of the clerk of Jefferson County, Kentucky.

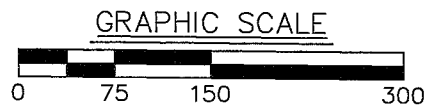
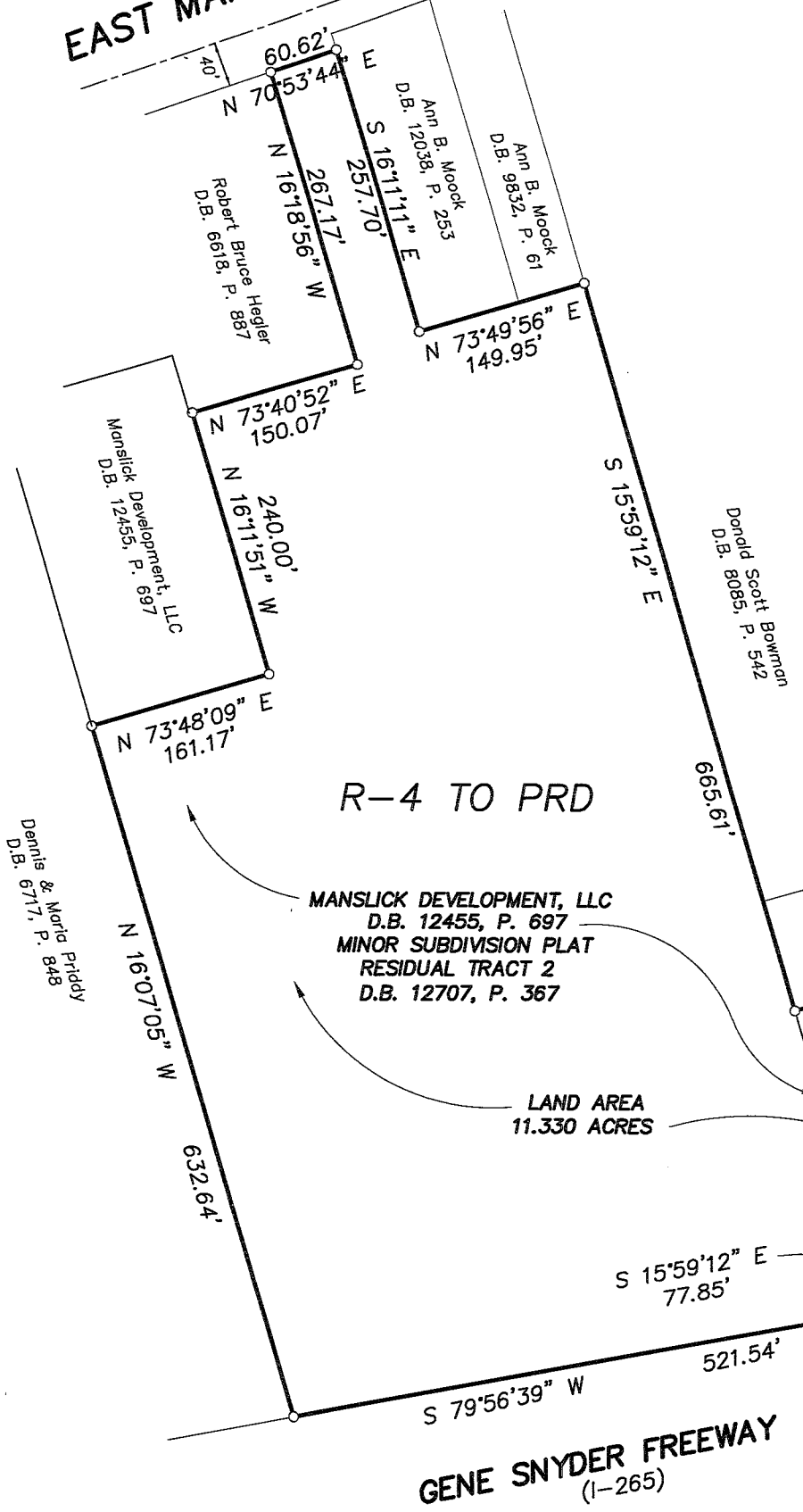
EAST MANSLICK ROAD



LOCATION MAP

No Scale

Bearing Datum based on Ky
Coordinate System (North Zone)
North American Datum of 1983
(S 15°59'12" E)



ZONING EXHIBIT

OWNER:

Manslick Development, LLC
6400 North Preston Highway
Louisville, Kentucky 40229
Tax Block 653, Tax Lot 13
Deed Book 12455, Page 697
Minor Subdivision Plat
Deed Book 12707, Page 367

OWNER:

Cody Layne McFarland
8908 Maple Road
Louisville, Kentucky 40229
Tax Block 653, Tax Lot 59
Deed Book 9898, Page 386

LOCATION:

5820 East Manslick Road
Louisville, Kentucky

DATE: 01/08/25

SCALE: 1"=150' JOB NO.: 3377-ZONING

THIS EXHIBIT IS FOR ZONING
PURPOSES ONLY AND DOES NOT
REPRESENT A BOUNDARY SURVEY
AND IS NOT FOR THE SALE OR
TRANSFER OF REAL PROPERTY

SABAK, WILSON & LINGO INC.
Engineers, Landscape Architects & Planners
The Henry Clay
608 S. Third Street
Louisville, Kentucky 40202
PH: 502-584-6271