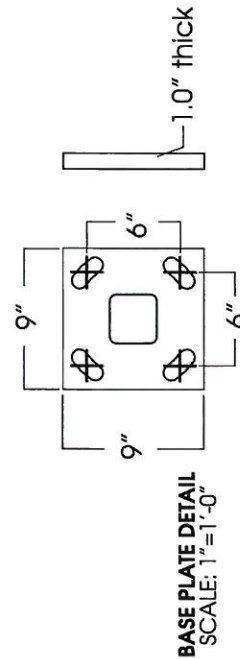
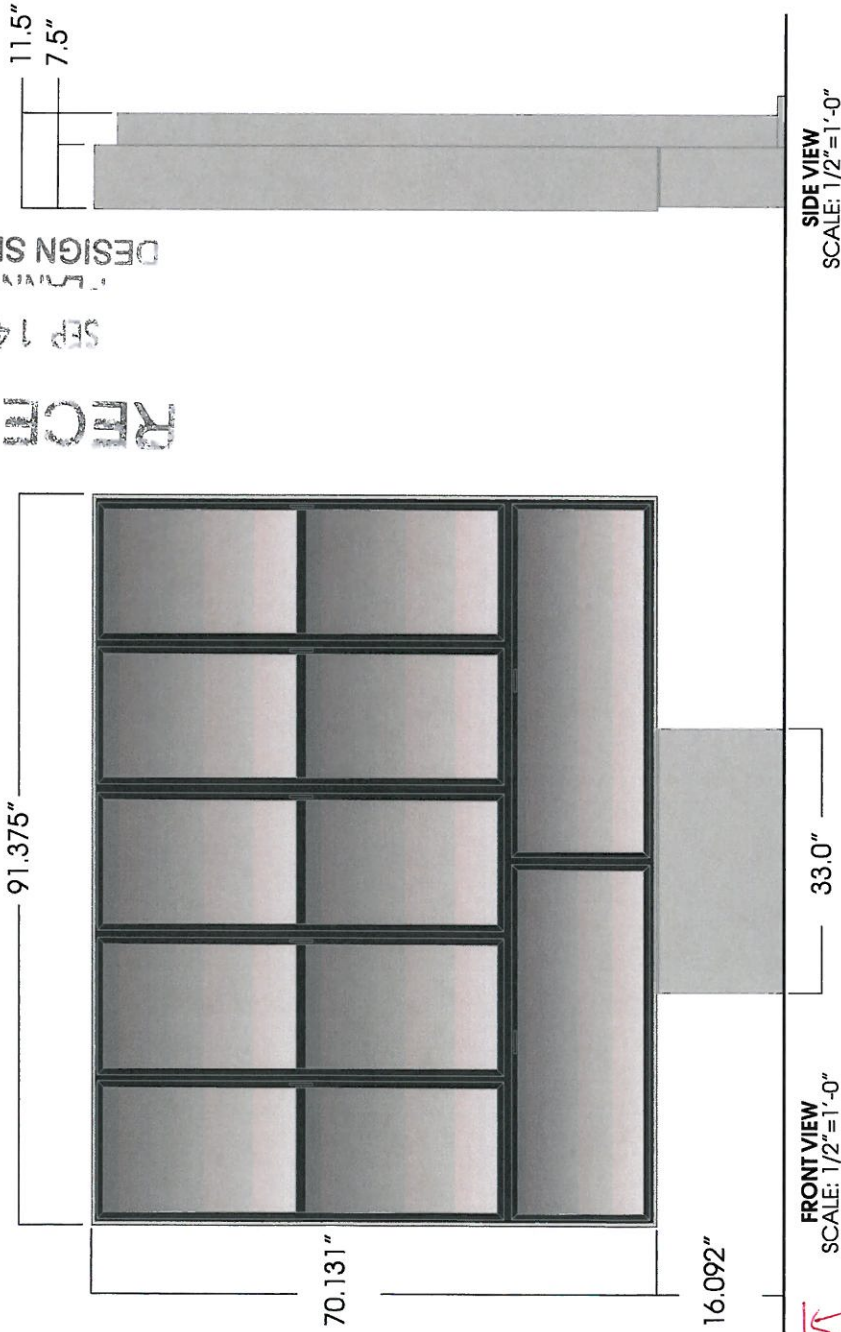


RECEIVED
SEP 14 2015
DESIGN SERVICES



GENERAL SPECIFICATIONS:

Materials: Aluminum sheets & steel tubes
Menu Board Area Squared: 44.50 Sq. Ft.
Weight (Est.):
• 745 lbs. (crated)
• 545 lbs. (uncrated)

ELECTRICAL

Illumination:
• White LEDs
Power Supplies:
• (2) 062-00008 Electronic LED Power Supplies
Line Load:
• 1.92 amps @ 120 vac-60Hz
• (1) 20 Amp circuit

COLORS:

All wrapper extrusions, back panels, pole weldment and cladding to be powder coated.
Everbrite paint spec: 303-00101 PWDRECT, AXALTA, NIKE SILVER

All vertical and horizontal door frames, door handle mullions, door jambs, and horizontal cabinet divider to be powder coated.

Everbrite paint spec: 202-00018 PWDRECT, BLACK, SD9

These product sheets are the exclusive property of Everbrite LLC. Use of this property in any manner without express written permission of Everbrite LLC is prohibited. Drawings are for graphic purposes only and not intended for actual construction. For more specific manufacturing data, please refer to engineering specifications and install drawings.

Everbrite LLC

Everbrite

Phone: 414-529-3500 • Fax: 414-529-7191
Website: www.everbrite.com

Part No:

Description:
Drive Thru Evolution LED VE Menuboard

Project No:

Date:

Drawn By:

