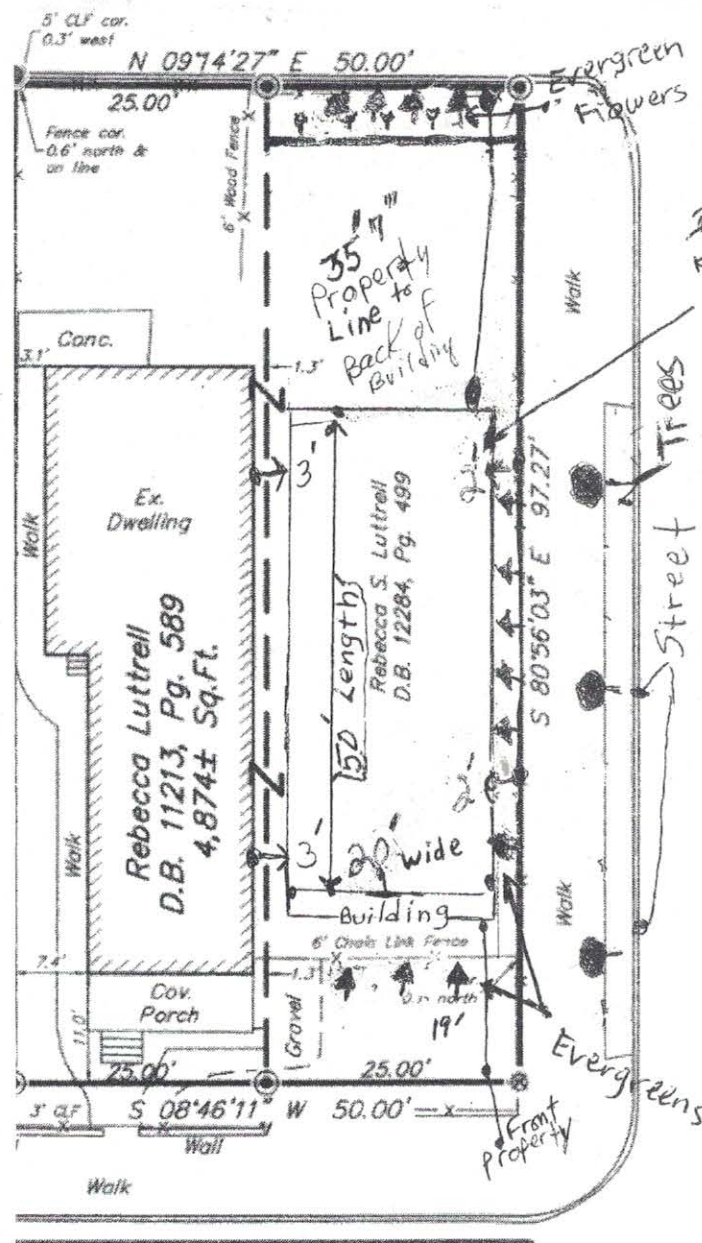


- * "An approved landscape plan will be required prior to the issuance of building permits"
- * "Street trees are required for all land uses along all public rights of way (excluding alleys). Street trees shall be selected and placed with the approval of Planning and Design Services with consultation from the Director of Public Works or designee."



I would like to keep this 3' if possible, because it's already small

Duncan Street
60' R/W
Dedications Unknown