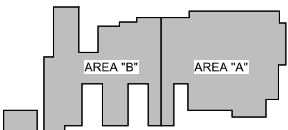


Kentucky
Humane Society
New Facility

1110 Meadow Ave.
Louisville KY, 40213



ANIMAL ARTS
architecture • animals • people



KEY PLAN

NO.	DATE	DESCRIPTION

Architect of Record:
K. NORMAN BERRY
ASSOCIATES ARCHITECTS PLLC
815 W. Market Street, Ste. 815
Louisville, KY 40202
502.582.2500

Design Architect:
ANIMAL ARTS
4520 Broadway, Suite E
Boulder, CO 80304
303.444.4413

Engineer:
KERR-GREULICH ENGINEERS, INC.
1534 Ormsby Station Court
Louisville, KY 40223
502.426.9457

Structural Engineer:
STRUCTURAL SERVICES, INC.
5948 Timber Ridge Drive, Ste. 201
Prospect, KY 40059
502.292.2100

Civil Engineer:
SABAK, WILSON & LINGO
608 S 3rd Street
Louisville, KY 40202
502.584.6271

Sheet Title:
Elevations

Project Number 22.0720

Drawn By AA / KNBA

Approved By KNBA

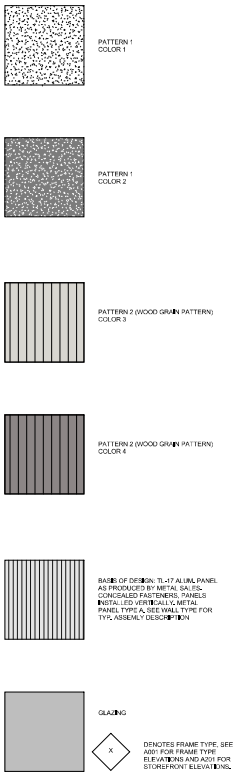
Date 12/16/2024

Revisions:

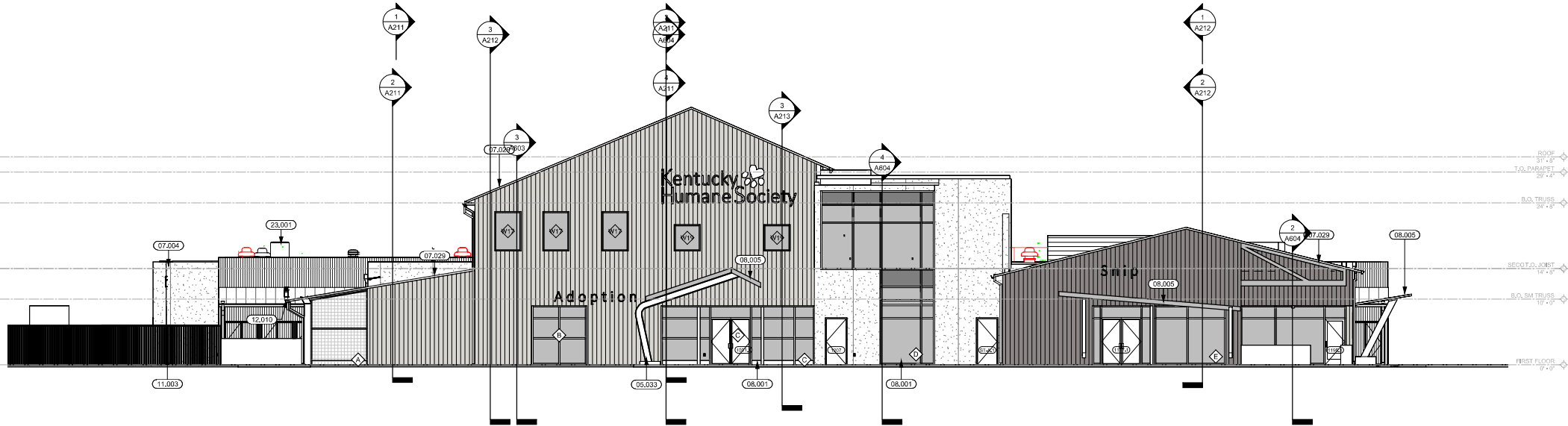
A200

12/16/2024 10:48 PM
25-DDP-0011

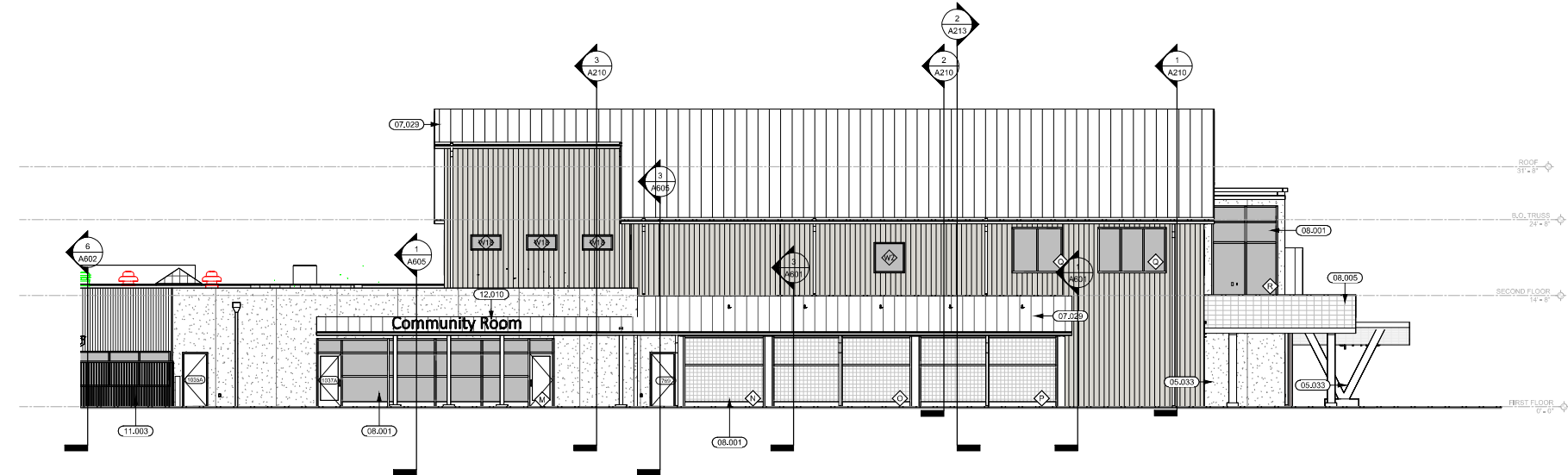
Keynotes	
Key	Description
05.031	METAL LADDER
05.033	ARCHITECTURALLY EXPOSED STEEL COLUMNS
07.004	6" DIA. PREFINISHED ALUMINUM DOWNSPOUT. SEE DETAIL 7/A/150. CONNECT TO UNDERGROUND DRAINAGE SYSTEM PER C.M.I. DRAWINGS
07.029	PREFINISHED STANDING SEAM METAL ROOFING OVER 30# ROOFING FELT. SEE DETAIL 7/A/150.
08.001	EXTERIOR ALUMINUM STOREFRONT SYSTEM
08.005	INSULATED SANDWICH PANEL GLAZING SYSTEM - CANOPY SYSTEM
11.003	FENCING - SEE C.M.I. DRAWINGS FOR TYPES
12.010	DIMENSIONAL LETTERING
23.001	MECHANICAL EQUIPMENT. SEE MEP DRAWINGS



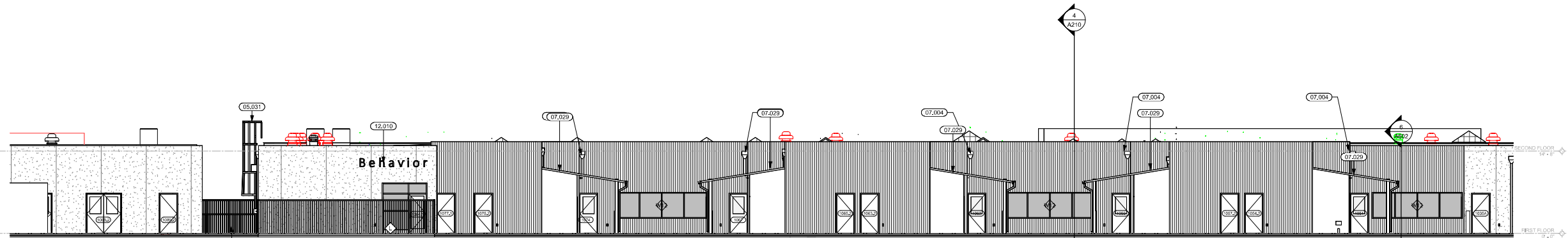
Exterior Material Legend
3/8" = 1'-0"



1 EAST ELEVATION
1/8" = 1'-0"

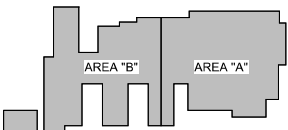


3 SOUTH ELEVATION AREA A
1/8" = 1'-0"



2 SOUTH ELEVATION AREA B
1/8" = 1'-0"

1110 Meadow Ave.
Louisville KY, 40213



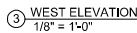
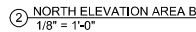
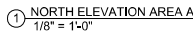
XX/XX/XX	
DATE	DESCRIPTION

Sheet Title: Elevations

Revisions:

12/16/2024 4:44:16 PM
25-DDP-0011

○ Exterior Material Legend
3/8" = 1'-0"





GENERAL NOTE:

3D MODEL VIEWS ON THIS SHEET ARE PROVIDED FOR GENERAL REFERENCE ONLY. THESE VIEWS ARE INTENDED TO AID THE UNDERSTANDING OF THE PROJECT AND NOT REPLACE OR OVER RIDE ANY OTHER DRAWINGS.

REFER TO THE CONSTRUCTION DOCUMENTS FOR ACCURATE DETAILS AND DIMENSIONS.

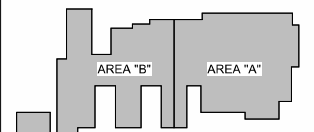


**Kentucky
Humane Society**
New Facility

1110 Meadow Ave.
Louisville KY, 40213



ANIMAL ARTS
architecture • animals • people



KEY PLAN

XX/XX/XX	
DATE	DESCRIPTION

Architect of Record:
K. NORMAN BERRY
ASSOCIATES ARCHITECTS PLLC
815 W. Market Street, Ste. 815
Louisville, KY 40202
502.582.2500

Design Architect:
ANIMAL ARTS
4520 Broadway, Suite E
Boulder, CO 80304
303.444.4413

Engineer:
KERR-GREULICH ENGINEERS, INC.
1534 Ormsby Station Court
Louisville, KY 40223
502.426.9457

Structural Engineer:
STRUCTURAL SERVICES, INC.
5948 Timber Ridge Drive, Ste. 201
Prospect, KY 40059
502.292.2100

Sheet Title: 3D Views

Project Number 22.0720

Drawn By AA / KNBA

Approved By KNBA

Date 12/16/2024

Revisions:

A220

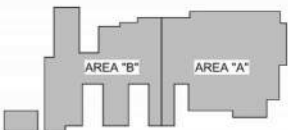
12/16/2024 4:47:00 PM
25-DDP-0011

Kentucky
Humane Society
New Facility

1110 Meadow Ave.
Louisville KY, 40213



ANIMAL ARTS
architecture · animals · people



KEY PLAN

00/00/00	
DATE	DESCRIPTION

Architect of Record:
K. NORMAN BERRY
ASSOCIATES ARCHITECTS PLLC
815 W. Market Street, Ste. 815
Louisville, KY 40202
502.582.2500

Design Architect:
ANIMAL ARTS
4520 Broadway, Suite E
Boulder, CO 80304
303.444.4413

Engineer:
KERR-GREULICH ENGINEERS, INC.
1534 Ormsby Station Court
Louisville, KY 40223
502.426.9457

Structural Engineer:
STRUCTURAL SERVICES, INC.
5948 Timber Ridge Drive, Ste. 201
Prospect, KY 40059
502.292.2100

Civil Engineer:
SABAK, WILSON & LINGO
608 S 3rd Street
Louisville, KY 40202
502.584.6271

Sheet Title:
3D VIEWS

Project Number 22.0720

Drawn By AA / KNBA

Approved By KNBA

Date 12/16/2024

Revisions:

A221

12/16/2024 17:57 25-DDP-0011



2 Snip Entrance



4 Community Room



3 Foster and Intake Entrance



1 Adoption Entrance