

EXTERIOR FINISH SCHEDULE						3/30/23
INSTALLED AND FURNISHED BY: G.C. UNLESS NOTED OTHERWISE						
NO	MANUFACTURER	MFQM	COLOR	FINISH	NOTES	
(EF-S-1)	STO	STOTHERM ESSENCE SYSTEM	SW 7546 FIRST STAR	FINE	BUILDING BODY	
(EF-S-2)	STO	STOTHERM ESSENCE SYSTEM	SW 7069 IRON ORE	FINE	EIFS ACCENT BAND	
(EF-S-3)	STO	STOTHERM ESSENCE SYSTEM	PANTONE COLOR 200C - RED	-	EIFS BEHIND TRELLIS	
(ST-15)	CORONADO STONE PRODUCTS	CHESEBOLD STONE SLL	CHARCOAL	-	STONE CAP (18" VERTICAL JOINT - MORTAR TO MATCH STONE CAP)	
(ST-1)	CORONADO STONE PRODUCTS	STRIP STONE	BLACK FOREST	-	WAINSCOT CONTACT: 864-962-1221 PROVIDE 3/8" MORTAR JOINTS, MISC. ANODIZ. COLOR: CHARCOAL	
(CD-1)	FIBERON	WILDWOOD	BAMBOO	-	COMPOSITE DECKING	
(MTL-2)	PANDA VENDOR	ALLEN INDUSTRIES	PM5 BLACK-7C	64TH FINISH	CANOPY W/LED W/ DOWN LIGHT AROUND BUILDING	
(MTL-3)	EXCEPTIONAL METALS	-	"PANDA EXPRESS IRON ORE"	CAP FLASHING		
WINDOW SCHEDULE						
INSTALLED AND FURNISHED BY: G.C. UNLESS NOTED OTHERWISE						
SYM	WIDTH	HEIGHT	GLASS	FRAME	REMARKS	NOTES
(A)	16'-2" LIN FEET	6'-10"	1" INSULATED GLASS	BLACK ANOD. ALUMINUM STOREFRONT	1" INSULATED GLAZING, IN 4' 5" X 2" IN ANODIZED ALUMINUM FRAME REFER WINDOW TYPES FOR INDIVIDUAL SIZES	1. INSULATING GLASS SOLARBAN 60 LOW E. WINTER U=0.28 SHGC: 0.25 VRS TRANS: 35% 2. DOORS: FULL GLAZED DOORS W/UP HICK BASE, ANODIZED ALUM. FINISH. REFER HARDWARE SCHEDULE
(B)	16'-9" LIN FEET	6'-10"	1" INSULATED GLASS	BLACK ANOD. ALUMINUM STOREFRONT	1" INSULATED GLAZING, IN 4' 5" X 2" IN ANODIZED ALUMINUM FRAME REFER WINDOW TYPES FOR INDIVIDUAL SIZES	3. WINDOW DIMENSIONS ARE FOR BIDDING PURPOSES ONLY, G.C. TO VERIFY ACTUAL WINDOW DIMENSIONS PRIOR TO FABRICATION INSTALLATION.
(C)	10'-10"	10'-0"	1" INSULATED GLASS	BLACK ANOD. ALUMINUM STOREFRONT	KAWNEER CURTAIN WALL 1620 SYSTEM WITH 1" INSULATED GLAZING, IN 6" X 2" IN ANODIZED ALUMINUM FRAME MOON GATE TO CONNECT WITH KAWNEER ATTACHMENT BRACKET B34-746.	4. GLASS FACADE AND ENTRY DOORS TO BE DESIGNED, DETAILED, FACTORY FABRICATED AND SITE ASSEMBLED AND ERECTED.
(D)	5'-2"	10'-0"	1" INSULATED GLASS	BLACK ANOD. ALUMINUM STOREFRONT	KAWNEER CURTAIN WALL 1620 SYSTEM WITH 1" INSULATED GLAZING, IN 6" X 2" IN ANODIZED ALUMINUM FRAME MOON GATE TO CONNECT WITH KAWNEER ATTACHMENT BRACKET B34-746.	5. MANUFACTURER: QUARK-SERVY MODEL SST-4400E WITH THRU-BEAM PHOTO-ELECTRIC BAR. REGIONAL APPLICATION WITH CF-25 NON HEATED AIR CURTAIN OR CF-25 HEATED AIR CURTAIN. TYPE OF AIR CURTAIN LISTED ON WINDOW SCHEDULE.
(E)	4'-0"	58.5"	TEMPERED GLASS	BLACK ANODIZED ALUMINUM	QUARK-SERVY (NON-HEATED AIR CURTAIN OR HEATED AIR CURTAIN), ROUGH OPENING 43" X 40" SEE ADDITIONAL NOTE #1. CONTACT: WADE ARNOLD, 809-388-4307	6. WINDOW SYSTEM SHALL COMPLY WITH APPLICABLE SECTION AND CHAPTER OF BUILDING CODE.
						① TEMPERED GLASS

RECEIVED

JUN 11 2024

OFFICE OF PLANNING

EXTERIOR FINISHES

Scale= NTS A-200

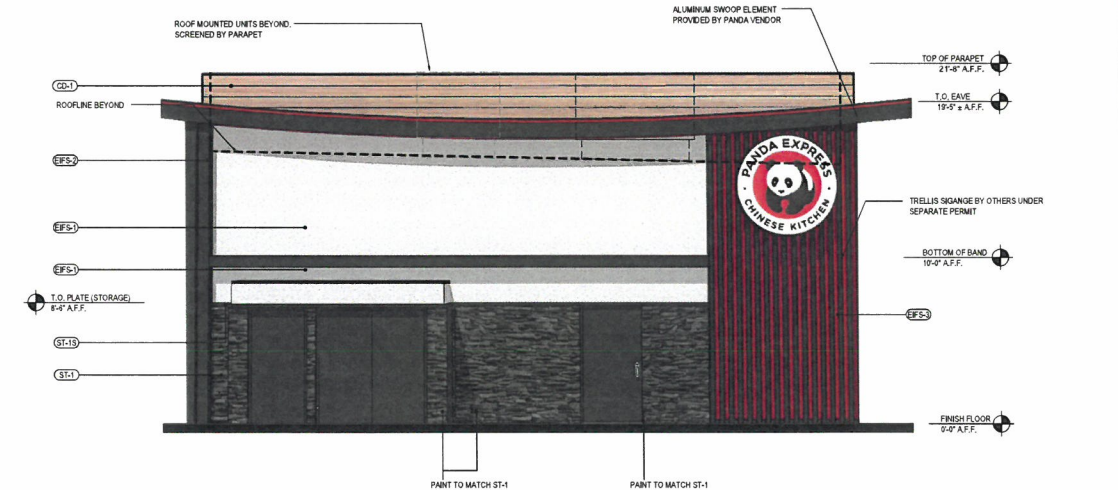


SIGHTLINES - EAST ELEVATION

Scale= 1/16" = 1'-0" A-200

SIGHTLINES - NORTH ELEVATION

Scale= 1/16" = 1'-0" A-200



EAST ELEVATION

Scale= 1/4" = 1'-0" A-200



PANDA EXPRESS, INC.
1683 Walnut Grove Ave.
Rosemead, California
91770
Telephone: 626.799.9898
Facsimile: 626.372.8288

All ideas, designs, arrangement and plans indicated or represented by this drawing are the property of Panda Express Inc. and were created for use on this specific project. None of these ideas, designs, arrangements or plans may be used by or disclosed to any person, firm, or corporation without the written permission of Panda Express Inc.

REVISIONS:

ISSUE DATE:

DRAWN BY:

AE

PANDA PROJECT #:

D20062

ARCH PROJECT #:

261-371



idGROUP

PANDA EXPRESS

TRUE WARM & WELCOME
JEFFERSON BLVD. AND OUTER LOOP ROAD
Louisville, KY. 40219

A-200

EXTERIOR
ELEVATIONS

PANDA HOME 2700

24-WAIVER-0102

RECEIVED

JUN 11 2024

OFFICE OF PLANNING

SOUTH ELEVATION

TOTAL FACADE:
1,454 SQFT.

- GLASS/WINDOWS: 274 (19%)
- FIBERON: 349 (24%)
- STONE: 237 (16%)
- STUCCO: 475 (33%)
- METAL/CAPPING: 119 (8%)

WEST ELEVATION

TOTAL FRONT FACADE:
1,015 SQFT.

- GLASS/WINDOWS: 140 (14%)
- FIBERON: 56 (5%)
- STONE: 168 (17%)
- STUCCO: 420 (41%)
- METAL/CAPPING: 231 (23%)

NORTH ELEVATION

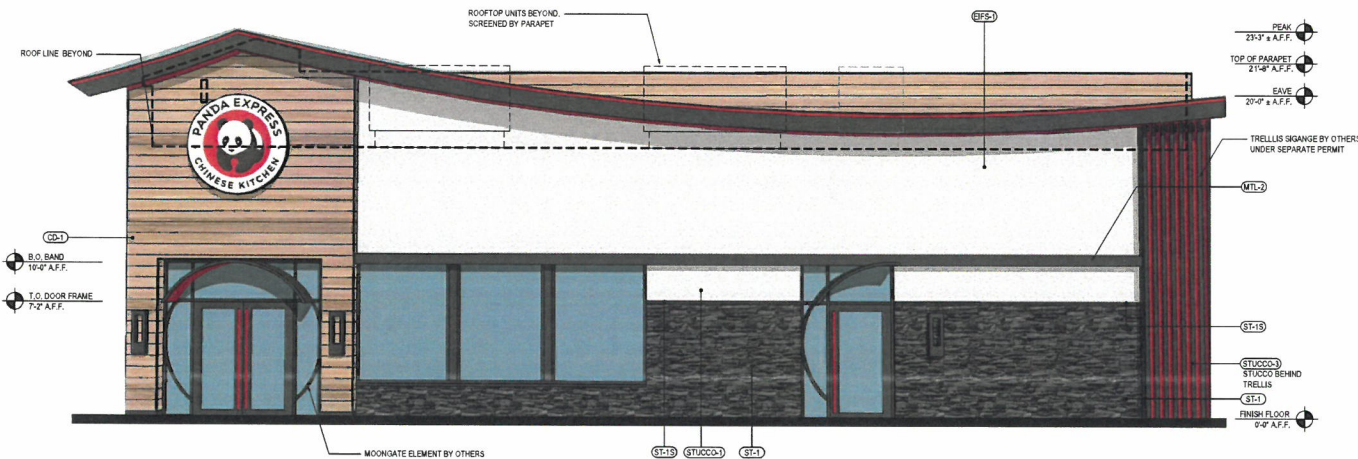
TOTAL FACADE:
1,440 SQFT.

- GLASS/WINDOWS: 20 (1%)
- FIBERON: 329 (23%)
- STONE: 229 (16%)
- STUCCO: 736 (51%)
- METAL/CAPPING: 126 (9%)

EAST ELEVATION

TOTAL FACADE:
913 SQFT.

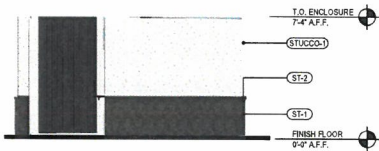
- GLASS/WINDOWS: 96 (11%)
- FIBERON: 131 (14%)
- STONE: 138 (15%)
- STUCCO: 466 (51%)
- METAL/CAPPING: 82 (9%)



*SEE SHEET A-200 FOR EXTERIOR FINISH SCHEDULE

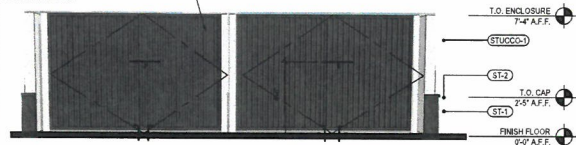
NOT USED 4
Scale= 1/4" = 1'-0" A-201

SOUTH ELEVATION 2
Scale= 1/4" = 1'-0" A-201



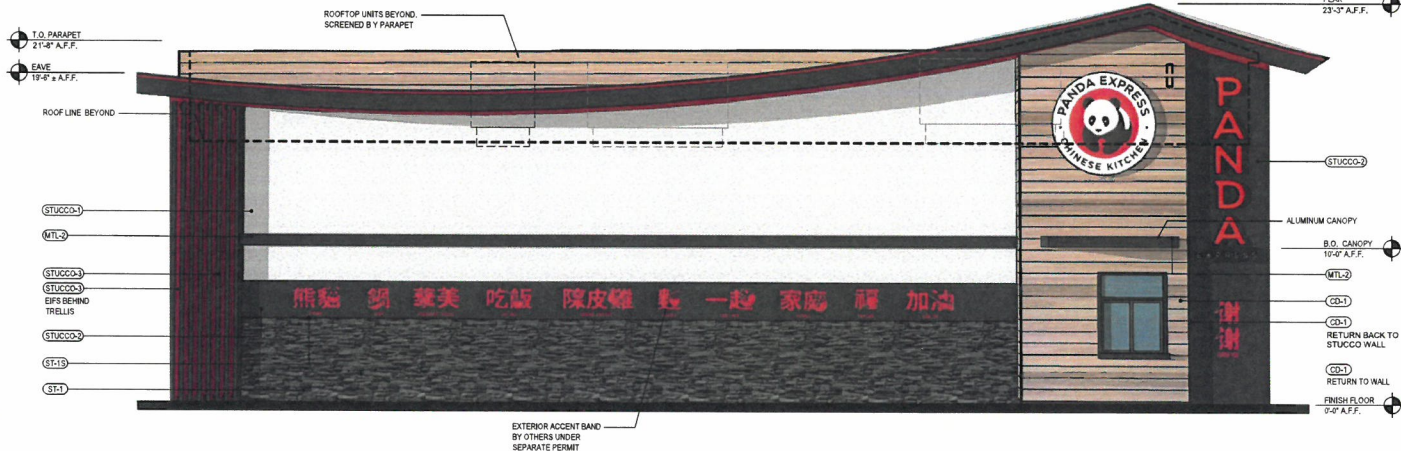
SIDE ELEVATION

1 1/2" 16 GA CORRUGATED GALVANIZED
STEEL DECKING WELDED TO FRAME. PRIME
AND PAINT ALL SIDES TO MATCH "PANDA
EXPRESS IRON GRE"



FRONT ELEVATION

DUMPSTER ELEVATIONS 3
Scale= 1/4" = 1'-0" A-201



*SEE SHEET A-200 FOR EXTERIOR FINISH SCHEDULE

NORTH ELEVATION 1
Scale= 1/4" = 1'-0" A-201



PANDA EXPRESS, INC.
1683 Walnut Grove Ave.
Rosemead, California
91770
Telephone: 626.799.9898
Facsimile: 626.372.6286

All ideas, designs, arrangement and plans indicated or
represented by this drawing are the property of Panda
Express Inc. and were created for use on this specific project.
None of these ideas, designs, arrangements or plans may be
used by or disclosed to any person, firm, or corporation
without the written permission of Panda Express Inc.

REVISIONS:

ISSUE DATE:

DRAWN BY: AE

PANDA PROJECT # D20062

ARCH PROJECT # 261-371



PANDA EXPRESS

TRUE WARM & WELCOME
JEFFERSON BLVD. AND OUTER LOOP ROAD
Louisville, KY. 40219

A-201

EXTERIOR
ELEVATIONS

PANDA HOME2700

24-WALNUT - 0102