

1 LEFT SIDE ELEVATION
A201 1/4" = 1'-0"



2 FRONT ELEVATION
A201 1/4" = 1'-0"



A. L. Post, Inc.
11301 Decimal Drive
Louisville, KY 40299
tel. 502.266.5060

KEY DENTAL

6305 E Manslick Rd,
Louisville, KY 40219

Revisions

No.	Description	Date

EXTERIOR ELEVATIONS

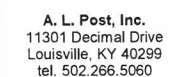
Project number 20211213
Drawn by A.S.
Checked by M.P.
Date 04-05-2022

A201

Scale 1/4" = 1'-0"

RECEIVED
MAY 16 2022
PLANNING & DESIGN
SERVICES

22-DDP-0047



KEY DENTAL

6305 E Manslick Rd,
Louisville, KY 40219

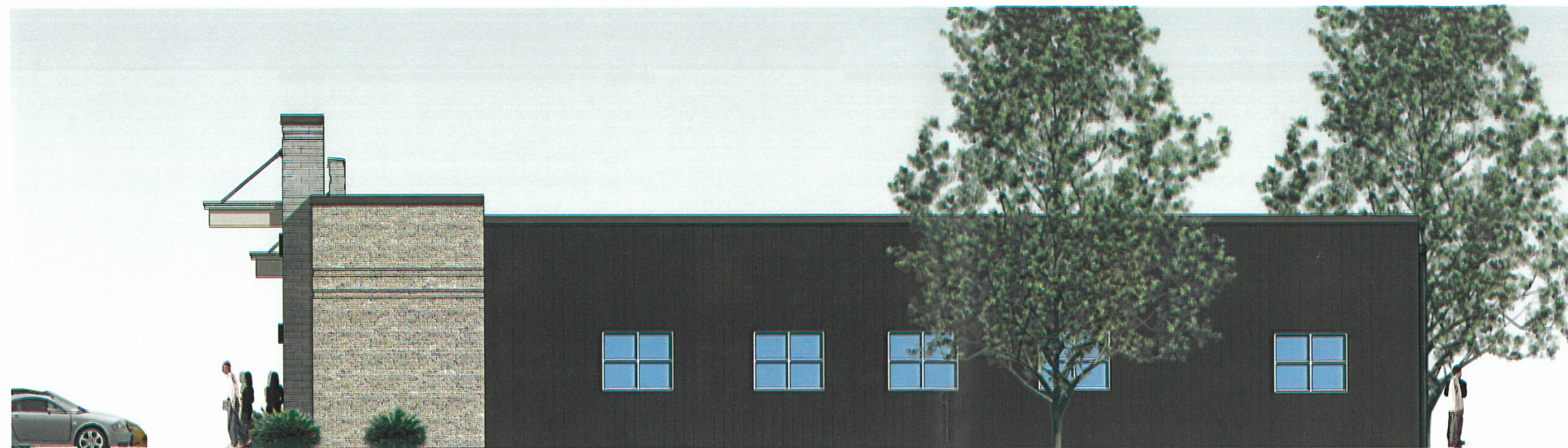
[illegible]

EXTERIOR ELEVATIONS

Project number	20211213
Drawn by	A.S.
Checked by	M.P.
Date	04-05-2022

A202

Scale $1/4" = 1'-0"$



3 RIGHT SIDE ELEVATION
A202 1/4" = 1'-0"



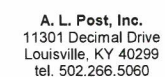
4 BACK SIDE ELEVATION
A202 1/4" = 1'-0"

RECEIVED

MAY 16 2022

**PLANNING & DESIGN
SERVICES**

22-DDP-0047



A. L. Post, Inc.
11301 Decimal Drive
Louisville, KY 40299
tel. 502.266.5060

KEY DENTAL

6305 E Manslick Rd,
Louisville, KY 40219

[illegible]

VIEWS

Project number	20211213
Drawn by	A.S.
Checked by	M.P.
Date	04-05-2022

A204

Scale

MAY 16 2022
PLANNING & DESIGN
SERVICES

22-DDP-0047