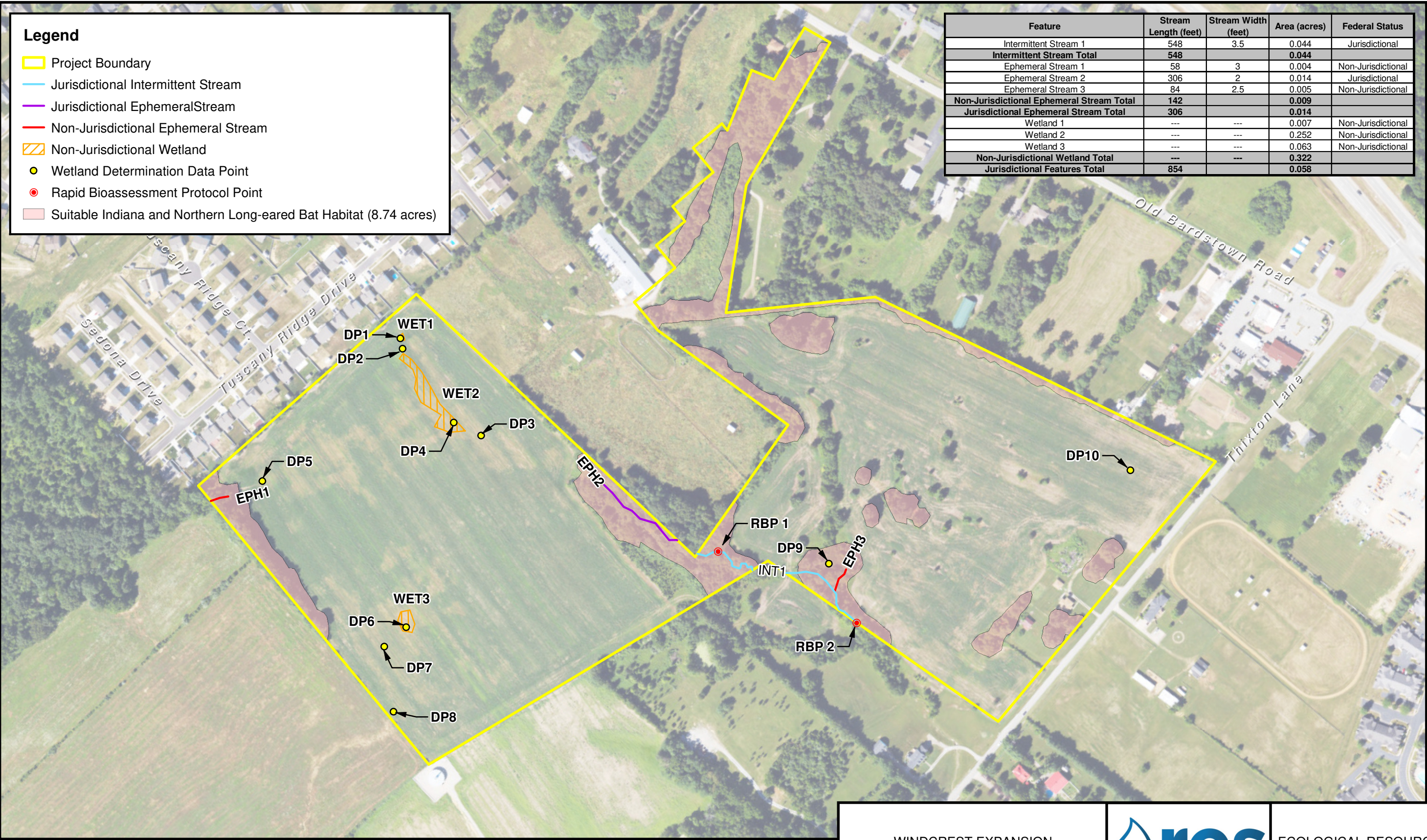
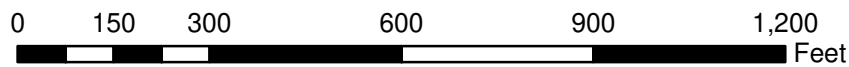


Source: Aerial - (NAIP-FSA) from kygisserver.ky.gov ArcGIS services (2022).



Feature	Stream Length (feet)	Stream Width (feet)	Area (acres)	Federal Status
Intermittent Stream 1	548	3.5	0.044	Jurisdictional
<b>Intermittent Stream Total</b>	<b>548</b>		<b>0.044</b>	
Ephemeral Stream 1	58	3	0.004	Non-Jurisdictional
Ephemeral Stream 2	306	2	0.014	Jurisdictional
Ephemeral Stream 3	84	2.5	0.005	Non-Jurisdictional
<b>Non-Jurisdictional Ephemeral Stream Total</b>	<b>142</b>		<b>0.009</b>	
<b>Jurisdictional Ephemeral Stream Total</b>	<b>306</b>		<b>0.014</b>	
Wetland 1	---	---	0.007	Non-Jurisdictional
Wetland 2	---	---	0.252	Non-Jurisdictional
Wetland 3	---	---	0.063	Non-Jurisdictional
<b>Non-Jurisdictional Wetland Total</b>	<b>---</b>	<b>---</b>	<b>0.322</b>	
<b>Jurisdictional Features Total</b>	<b>854</b>		<b>0.058</b>	



NOTE: JURISDICTIONAL WATER/WETLAND BOUNDARIES WERE DELINEATED, AND HABITAT ASSESSMENTS WERE COMPLETED, BY RES SCIENTISTS ON JULY 25, 2024. THE WATER/WETLAND BOUNDARIES HAVE NOT BEEN VERIFIED BY THE U.S. ARMY CORPS OF ENGINEERS. USE OF THIS MAP IS FOR PRELIMINARY PLANNING PURPOSES ONLY



WINDCREST EXPANSION  
JEFFERSON COUNTY, KENTUCKY



ECOLOGICAL RESOURCES  
MAP

REVISED DATE: 07-30-24 | DRAWN BY: BWY

FIGURE 1