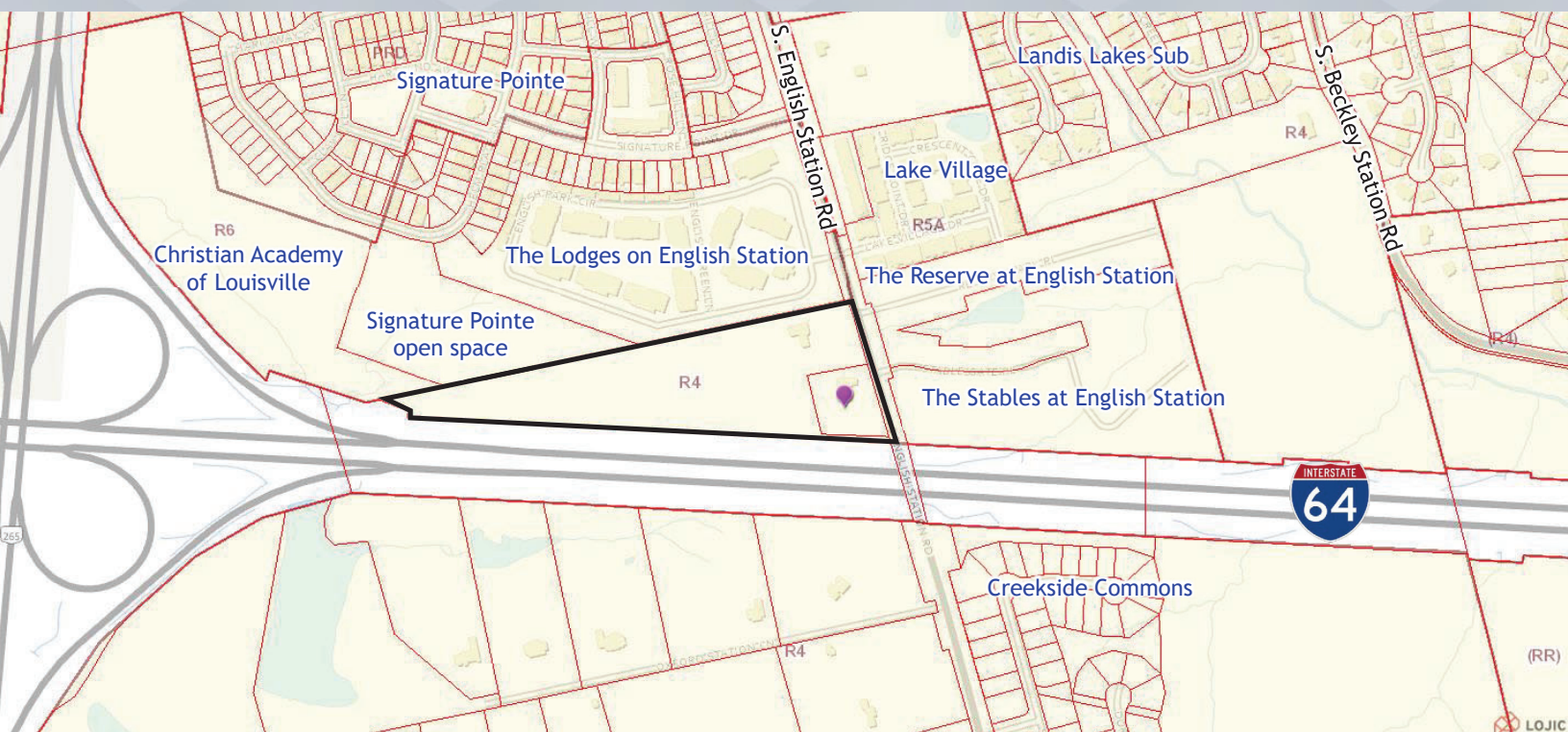


Louisville Metro Land Design & Development Committee Meeting - May 9, 2024
Neighborhood Meeting - January 30, 2024

DOCKET NO. 24-ZONE-0014

**ZONE CHANGE FROM R-4 TO C-M TO ALLOW A SELF STORAGE FACILITY WITH RV
AND BOAT PARKING ON PROPERTY LOCATED AT
908 & 910 S. ENGLISH STATION ROAD**

Attorneys: Bardenwerper Talbott & Roberts, PLLC
Land Planners, Landscape Architects & Engineers: Land Design & Development, Inc.











SITE

View of S. English Station Road, looking north. Site is to the left.



View of S. English Station Road, looking south. Site is to the right.



View of site from S. English Station Road.



PROPOSED DEVELOPMENT PLAN

Enhanced landscaping to be provided

Existing vegetation to be preserved

LEGEND

INTERSTATE 64 EXPRESSWAY - VAR. R/W)

S. ENGLISH STATION ROAD R/W VARIAS
(SECONDARY COLLECTOR - 80' R/W MIN. PERIOD)

[illegible][illegible]

PROPOSED DEVELOPMENT PLAN

100 FT
LG&E Easement

200 FT
Transmission Line
Easement

60 FT
Transmission Line
Easement

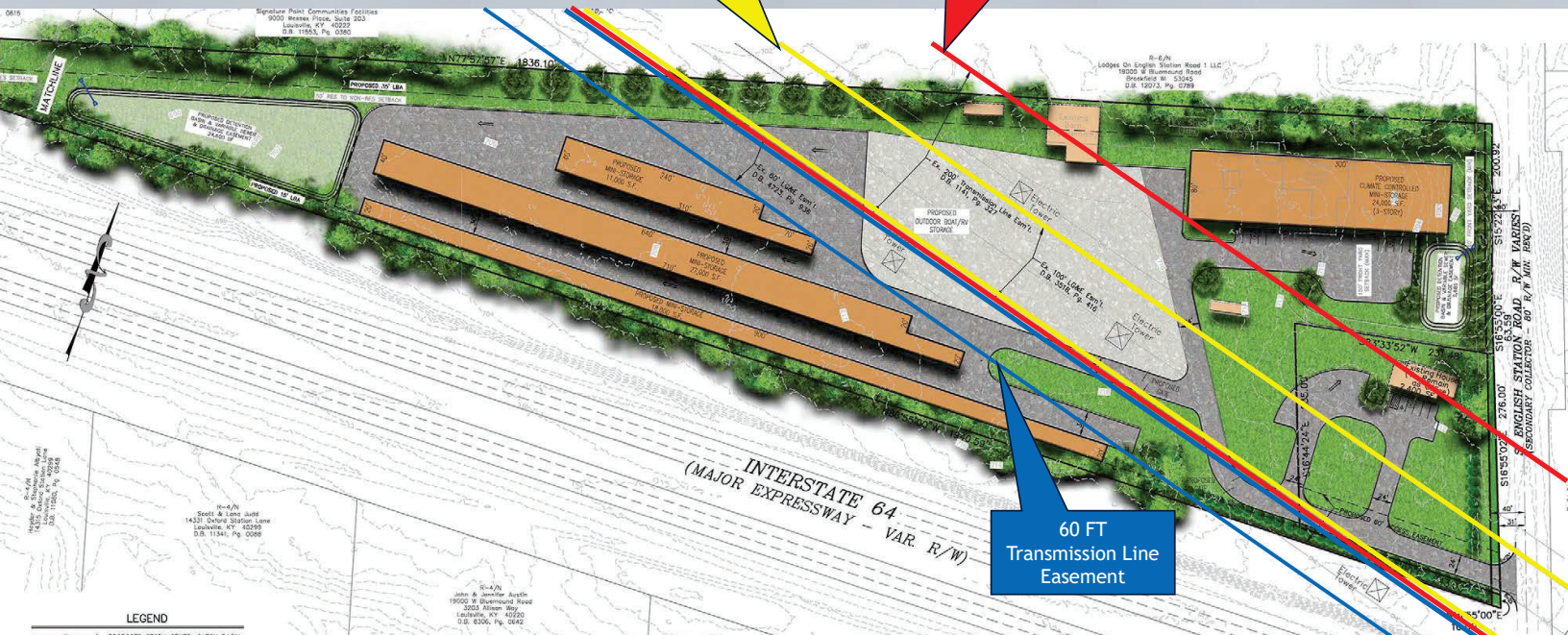
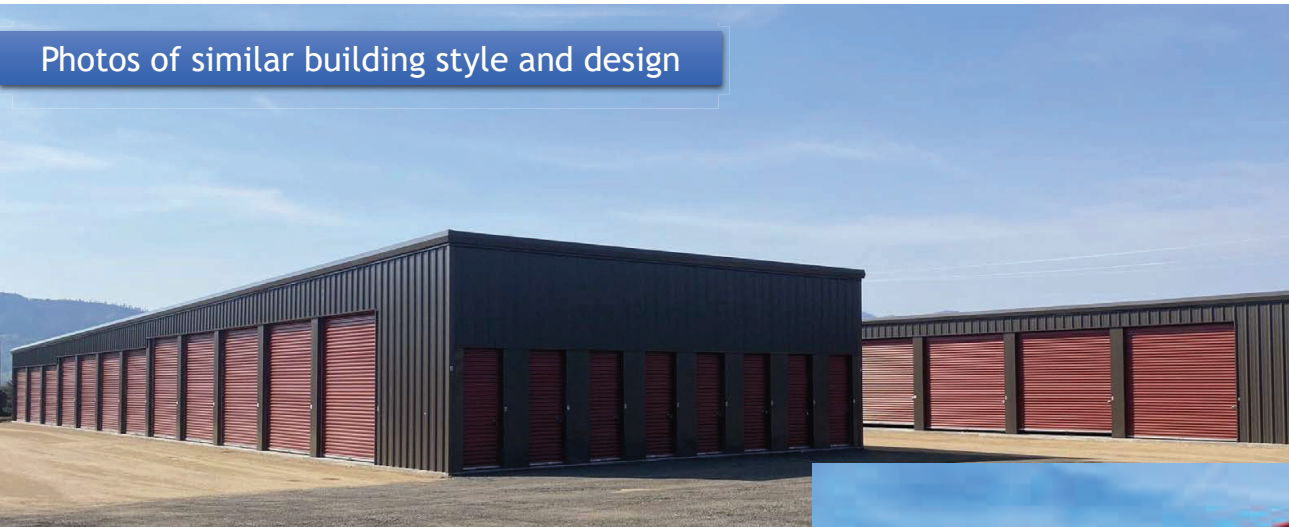


Photo of similar building style and design

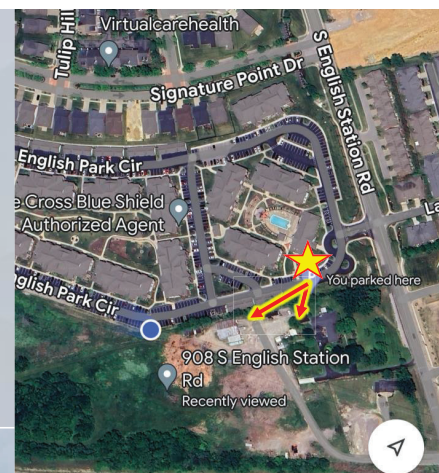


Photos of similar building style and design



Applicant shall work with Planning staff to determine the best color scheme for the buildings.

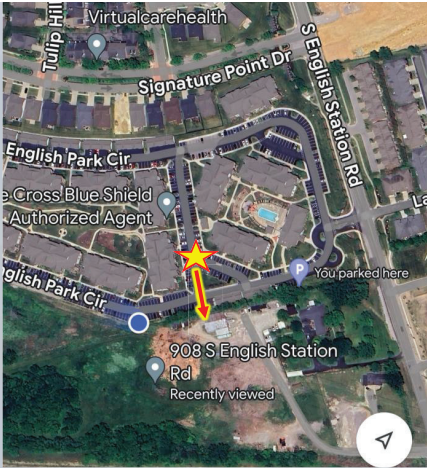


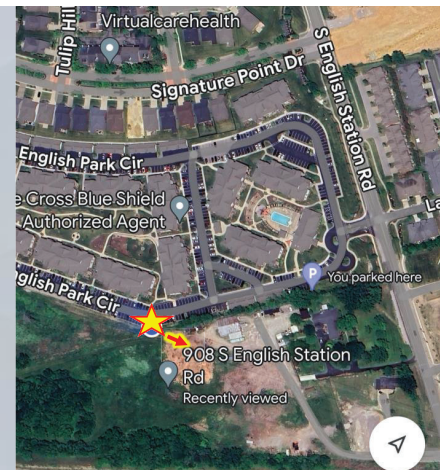


View of site from Lodges on English Station.



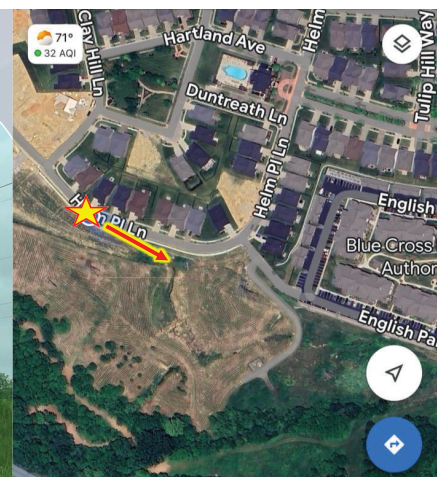
View of site from Lodges on English Station.



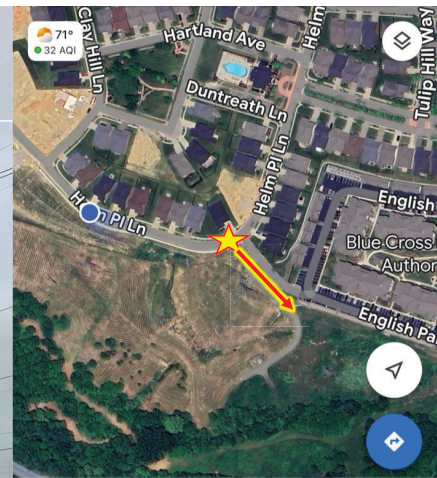


View of site from Lodges on English Station.

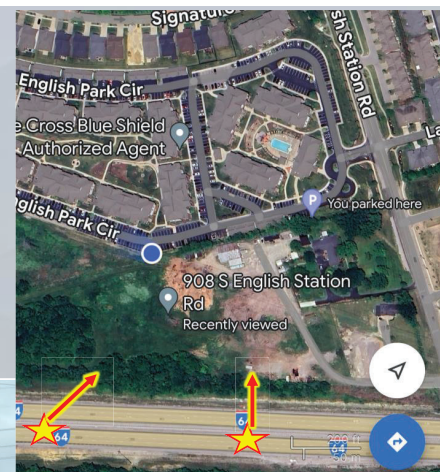




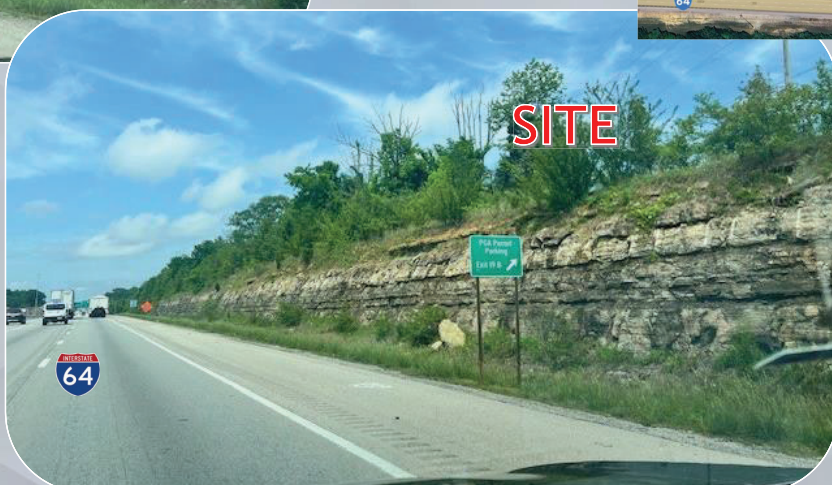
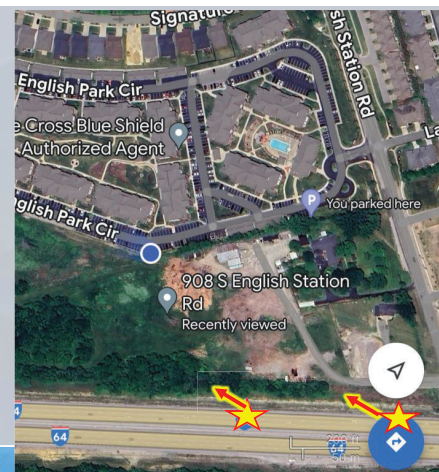
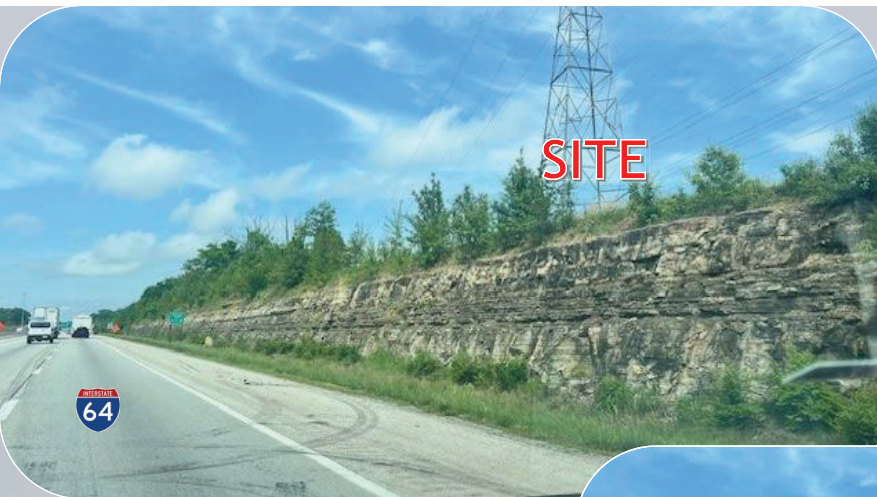
View of site from Helm Place Ln.



View of site from Helm Place Ln.

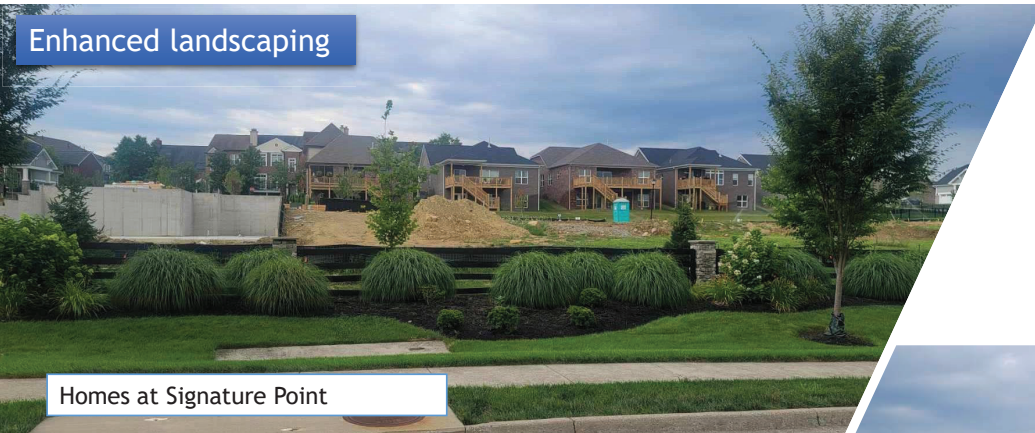


View of site from I-64 East.



View of site from I-64 West.

Enhanced landscaping



Homes at Signature Point

Houses on S. English Station



Enhanced landscaping



Valencia and Troon Patio Homes on S. English Station

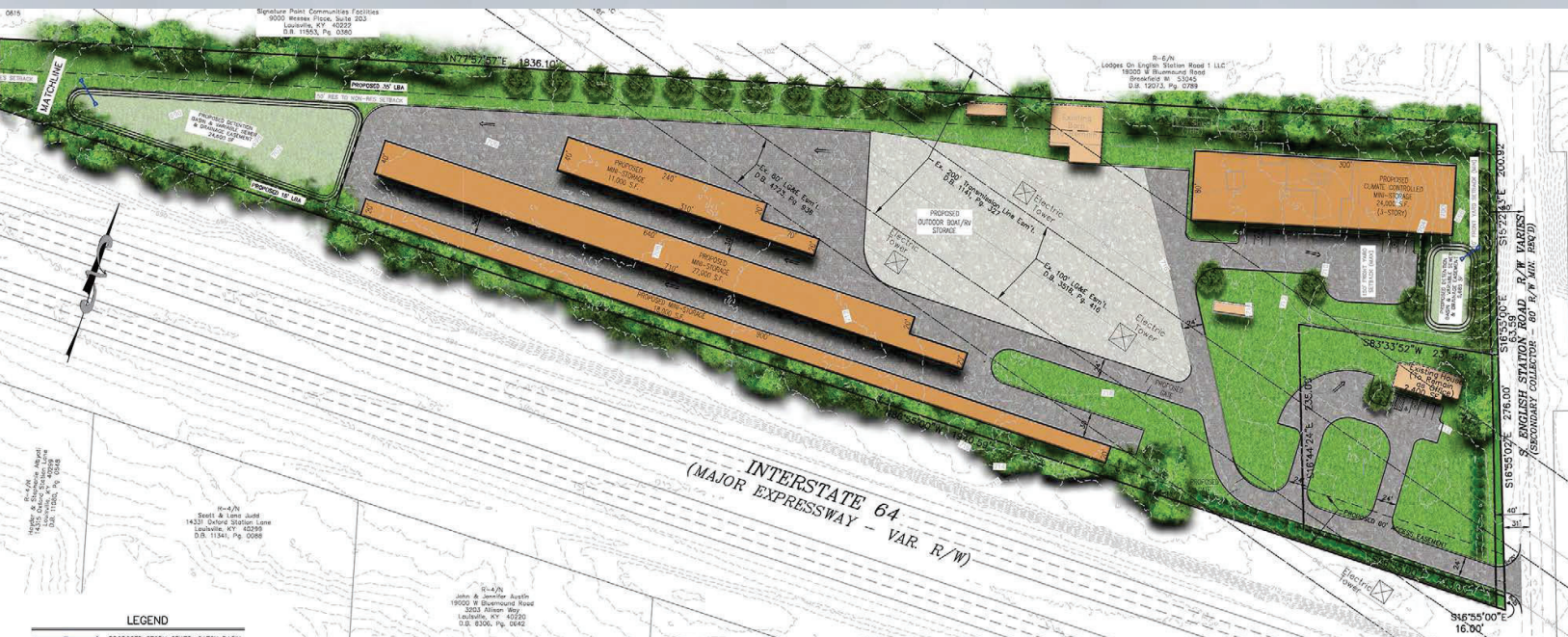


Shopping center on S. English Station

Enhanced landscaping



PROPOSED DEVELOPMENT PLAN



Questions?

